

Presentation to the Board of Education

Olentangy Local Schools
Facility Committee
November 10, 2016

District-Wide Projections

- ✓ Two models to review
 - ✓ Traditional Smoothing Model
 - ✓ Housing Model
- ✓ Last year, we presented these two models as well
 - ✓ Recommended the Traditional Smoothing Model
- ✓ This year, we recommend using the Housing Model
 - ✓ Continued difficulty in projecting Kindergarten
 - ✓ Increased number of building permits issued
 - ✓ Increased number of existing homes

Accuracy Review

Olentangy Local School District
 Actual vs. Projected Enrollment

	Actual, 2016-17*	Projected	Difference	Percentage
Pre-K	448	344	-104	-23.21%
K	1,319	1,241	-78	-5.91%
1	1,489	1,484	-5	-0.34%
2	1,487	1,454	-33	-2.22%
3	1,569	1,573	4	0.25%
4	1,516	1,466	-50	-3.30%
5	1,627	1,647	20	1.23%
K-5 Total	9,007	8,865	-142	-1.58%
6	1,693	1,687	-6	-0.35%
7	1,722	1,714	-8	-0.46%
8	1,614	1,611	-3	-0.19%
6-8 Total	5,029	5,012	-17	-0.34%
9	1,590	1,602	12	0.75%
10	1,545	1,523	-22	-1.42%
11	1,470	1,469	-1	-0.07%
12	1,298	1,315	17	1.31%
9-12 Total	5,903	5,909	6	0.10%
Total	20,387	20,130	-257	-1.26%

Source: Olentangy Local School District

* as of November 2, 2016

Without Pre-K, projection is within .77% of actual enrollment.

However, K is off by almost 6 percent.

Building Permits

Building permits increasing. On pace to be over 600 this year.

**Olentangy Local School District
Single Family Building Permit Data**

Year	Berkshire Twp	Berlin Twp	Concord Twp	Delaware Twp	Genoa Twp	Liberty Twp	Orange Twp	Delaware City	City of Powell	City of Columbus	Total
2005	12	84	52	9	194	165	405	92	216	164	1,393
2006	20	66	13	8	96	102	216	72	138	37	768
2007	23	40	12	0	78	75	227	58	94	42	649
2008	8	30	12	0	44	69	142	23	41	18	387
2009	19	20	8	1	52	30	129	24	32	14	329
2010	6	35	9	0	52	45	117	52	34	20	370
2011	9	40	11	2	65	66	170	46	45	14	468
2012	11	26	13	6	62	104	160	53	50	53	538
2013	18	19	12	7	45	116	159	95	68	74	613
2014	21	27	10	1	10	78	137	104	104	21	513
2015	38	24	10	2	12	63	161	88	56	53	507
2016 YTD*	15	32	7	0	8	77	125	84	53	15	416

Source: Delaware County Regional Planning Commission; City of Powell; Delaware City; MORPC

* through August 2016; Powell through July 2016; City of Columbus through June 2016

Birth Counts

Continue to be fairly steady.

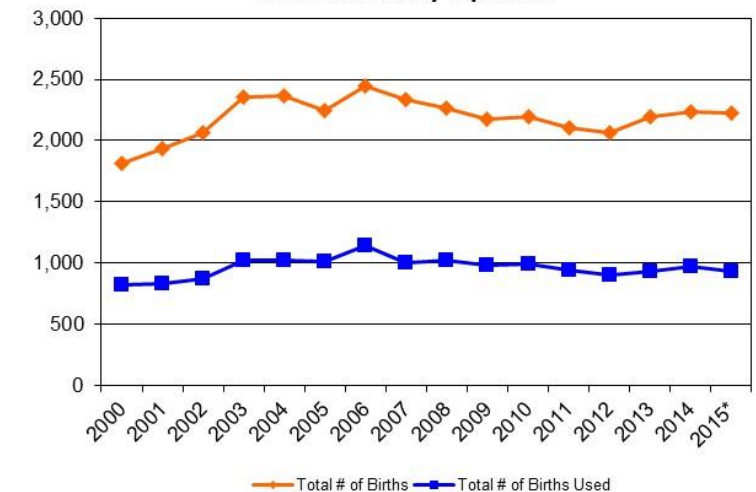
Olentangy Local School District
 Live Birth Counts by Zip Code

Year	43015	43021	43035	43065	43074	43082	43240	Total # of Births	Total # of Births Used
2000	525	65	317	469	99	301	34	1,810	820
2001	594	62	346	456	112	329	33	1,932	835
2002	646	71	358	481	117	354	36	2,063	875
2003	694	82	429	542	153	406	48	2,354	1,019
2004	678	94	434	522	154	413	67	2,362	1,023
2005	622	89	437	525	151	372	53	2,249	1,015
2006	694	103	507	570	137	368	63	2,442	1,140
2007	732	129	447	477	149	325	75	2,334	999
2008	683	112	447	505	142	308	71	2,268	1,023
2009	654	116	458	441	129	289	84	2,171	983
2010	640	113	430	489	139	310	73	2,194	992
2011	630	118	437	434	122	291	69	2,101	940
2012	669	112	401	428	129	260	70	2,069	899
2013	680	109	418	441	138	338	74	2,198	933
2014	682	129	431	455	156	300	83	2,236	969
2015*	689	144	407	437	148	321	84	2,230	928

Source: Ohio Department of Health, Vital Statistics

* preliminary

Olentangy Local School District
 Birth Counts by Zip Code



Traditional Smoothing Model

- ✓ Uses 1-year average of survival ratios
- ✓ Higher than last year's projection
 - ✓ 1,739 more students in the 2025-26 school year; 451 more in grades K-5

from	to	birth -> K	K->1	1->2	2->3	3->4	4->5	5->6	6->7	7->8	8->9	9->10	10->11	11->12
2007	2008	123.0%	109.6%	101.1%	103.9%	104.1%	105.6%	102.8%	103.9%	101.1%	104.6%	101.8%	102.1%	98.9%
2008	2009	128.9%	113.5%	102.4%	101.6%	103.2%	99.8%	103.1%	102.4%	101.7%	103.0%	100.4%	100.9%	99.9%
2009	2010	132.3%	112.8%	102.7%	102.1%	103.2%	101.2%	104.3%	99.9%	100.5%	104.1%	101.9%	101.7%	100.5%
2010	2011	117.6%	110.0%	100.7%	101.8%	102.3%	100.6%	102.6%	103.4%	102.3%	102.3%	99.9%	102.6%	100.6%
2011	2012	124.2%	112.1%	102.9%	104.0%	101.5%	102.8%	102.3%	100.9%	102.0%	103.3%	100.8%	99.7%	99.8%
2012	2013	125.3%	113.1%	100.9%	102.8%	101.6%	101.0%	103.2%	101.8%	100.5%	102.7%	99.8%	99.2%	100.8%
2013	2014	124.0%	116.4%	101.9%	104.9%	102.3%	104.3%	103.0%	102.9%	100.9%	101.7%	99.9%	100.3%	100.1%
2014	2015	128.0%	116.7%	102.0%	101.3%	99.7%	103.0%	101.6%	101.1%	101.6%	102.7%	100.2%	100.1%	99.0%
2015	2016	140.3%	117.2%	104.5%	103.1%	104.6%	102.6%	102.9%	102.6%	101.6%	101.7%	101.7%	100.5%	98.5%
	average	127.08%	113.490%	102.11%	102.9%	102.50%	102.3%	102.9%	102.1%	101.4%	102.912%	100.707%	100.783%	99.777%
	standard deviation	6.091%	2.653%	1.122%	1.165%	1.401%	1.745%	0.688%	1.206%	0.620%	0.939%	0.813%	1.065%	0.771%

Traditional Smoothing Model

Olentangy Local School District
Projected Enrollment - Traditional Smoothing Model

	2016-17 Actual*	2016-17 End of Year	2017-18	2018-19	2019-20	2020-21	2021-22	2022-23	2023-24	2024-25	2025-26	2026-27
Pre-K	448	451	428	445	462	442	444	447	449	451	453	456
K	1,319	1,329	1,261	1,309	1,360	1,302	1,309	1,315	1,322	1,328	1,335	1,342
1	1,489	1,500	1,546	1,479	1,535	1,594	1,527	1,534	1,542	1,550	1,557	1,565
2	1,487	1,498	1,556	1,616	1,546	1,604	1,666	1,595	1,603	1,611	1,619	1,628
3	1,569	1,581	1,533	1,604	1,666	1,593	1,653	1,717	1,645	1,653	1,661	1,669
4	1,516	1,528	1,642	1,604	1,678	1,743	1,667	1,730	1,797	1,721	1,729	1,738
5	1,627	1,640	1,555	1,684	1,645	1,722	1,788	1,710	1,775	1,843	1,765	1,774
K-5 Total	9,007	9,076	9,093	9,296	9,430	9,558	9,610	9,601	9,684	9,706	9,666	9,716
6	1,693	1,706	1,673	1,600	1,732	1,692	1,771	1,839	1,759	1,825	1,896	1,816
7	1,722	1,735	1,737	1,717	1,642	1,777	1,737	1,817	1,887	1,805	1,873	1,945
8	1,614	1,626	1,750	1,766	1,745	1,668	1,807	1,765	1,847	1,918	1,835	1,904
6-8 Total	5,029	5,067	5,160	5,083	5,119	5,137	5,315	5,421	5,493	5,548	5,604	5,665
9	1,590	1,602	1,641	1,779	1,795	1,774	1,696	1,837	1,794	1,878	1,950	1,865
10	1,545	1,557	1,617	1,669	1,810	1,826	1,805	1,725	1,868	1,825	1,910	1,983
11	1,470	1,481	1,552	1,625	1,677	1,818	1,835	1,813	1,733	1,877	1,834	1,919
12	1,298	1,308	1,448	1,529	1,600	1,651	1,791	1,807	1,786	1,707	1,849	1,806
9-12 Total	5,903	5,948	6,258	6,602	6,882	7,069	7,127	7,182	7,181	7,287	7,543	7,573
Total	20,387	20,542	20,939	21,426	21,893	22,206	22,496	22,651	22,807	22,992	23,266	23,410

Source: FutureThink

* as of November 2, 2016

Housing Model

Olentangy Local School District
Projected Enrollment - Housing Model

	2016-17 Actual*	2016-17 End of Year	2017-18	2018-19	2019-20	2020-21	2021-22	2022-23	2023-24	2024-25	2025-26	2026-27
Pre-K	448	451	465	479	476	472	468	461	465	469	473	477
K	1,319	1,329	1,369	1,411	1,400	1,389	1,378	1,356	1,368	1,380	1,391	1,403
1	1,489	1,500	1,547	1,594	1,582	1,570	1,558	1,533	1,546	1,559	1,572	1,585
2	1,487	1,498	1,542	1,602	1,651	1,639	1,626	1,613	1,588	1,601	1,615	1,629
3	1,569	1,581	1,528	1,585	1,647	1,697	1,684	1,671	1,658	1,632	1,646	1,659
4	1,516	1,528	1,637	1,594	1,654	1,718	1,770	1,757	1,744	1,730	1,702	1,717
5	1,627	1,640	1,549	1,673	1,630	1,690	1,756	1,810	1,795	1,781	1,768	1,740
K-5 Total	9,007	9,076	9,172	9,459	9,564	9,703	9,772	9,740	9,699	9,683	9,694	9,733
6	1,693	1,706	1,673	1,594	1,721	1,676	1,739	1,806	1,861	1,847	1,833	1,819
7	1,722	1,735	1,740	1,717	1,635	1,766	1,720	1,784	1,854	1,910	1,896	1,881
8	1,614	1,626	1,753	1,769	1,745	1,662	1,795	1,748	1,813	1,884	1,941	1,927
6-8 Total	5,029	5,067	5,166	5,080	5,101	5,104	5,254	5,338	5,528	5,641	5,670	5,627
9	1,590	1,602	1,644	1,782	1,798	1,774	1,690	1,825	1,777	1,844	1,915	1,974
10	1,545	1,557	1,620	1,672	1,813	1,829	1,805	1,719	1,856	1,808	1,875	1,948
11	1,470	1,481	1,555	1,628	1,680	1,822	1,838	1,813	1,727	1,865	1,816	1,884
12	1,298	1,308	1,451	1,532	1,603	1,655	1,794	1,810	1,786	1,701	1,837	1,789
9-12 Total	5,903	5,948	6,270	6,614	6,894	7,080	7,127	7,167	7,146	7,218	7,443	7,595
Total	20,387	20,427	21,073	21,632	22,035	22,359	22,621	22,706	22,838	23,011	23,280	23,432

Source: FutureThink

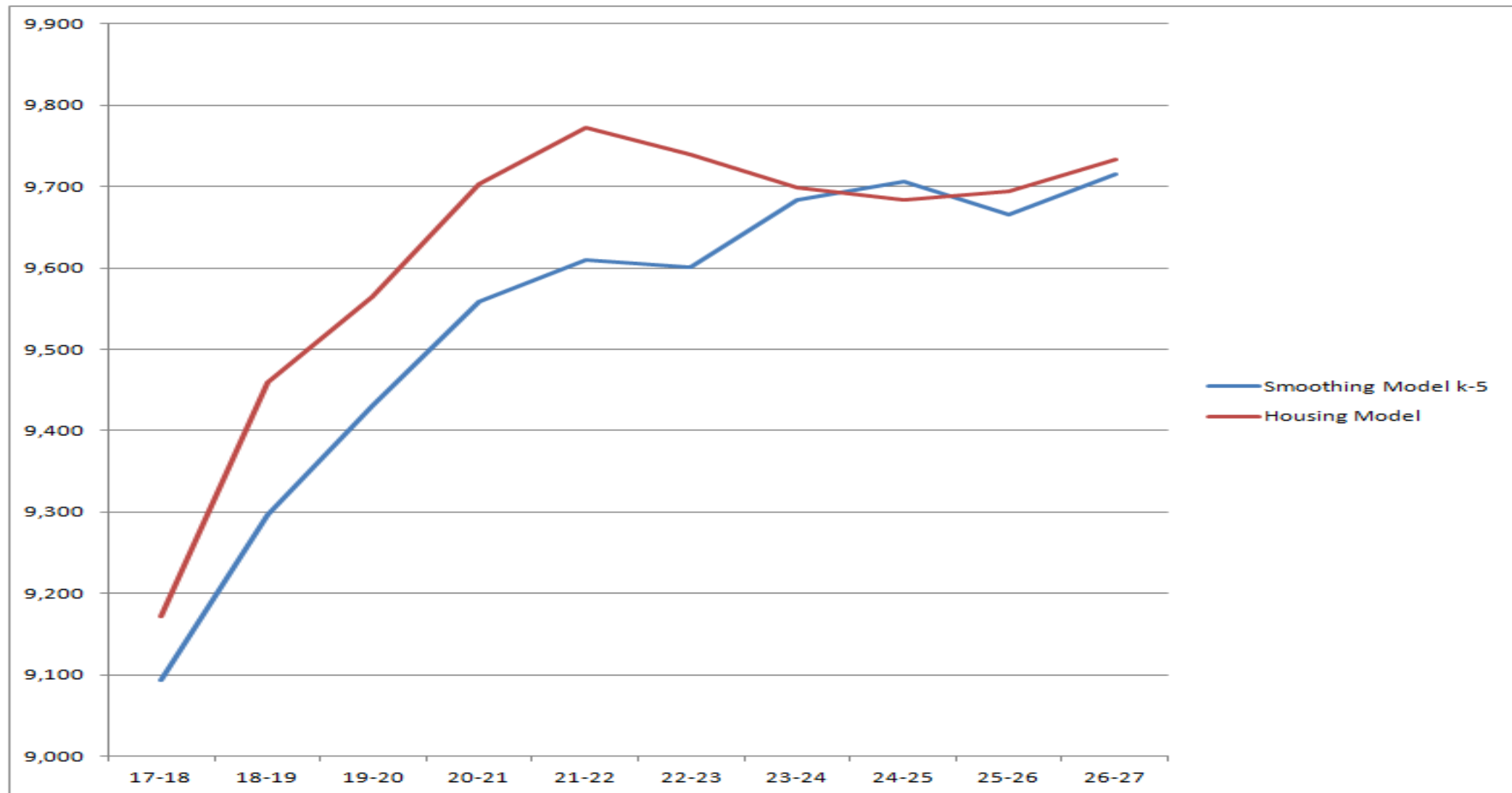
* as of November 2, 2016

2016 Using 2014 Bins K-1 Subdivision Yields Crossreferenced by Median Age and Current Assessed Value															
	Average Assessed Value													Yield by Age	Housing Units
	< 150K	150K-200K	200K-250K	250K-300K	300K-350K	350K-400K	400K-450K	450K-500K	500K-550K	550K-600K	600K-650K	650K-700K	> 700K		
> 35	0.00	0.03	0.06		0.09									0.06	339
30-35				0.04					0.00			0.04		0.03	94
25-30		0.05		0.07	0.06		0.14	0.00	0.03			0.01		0.06	1,487
20-25			0.10	0.08			0.03	0.05	0.06				0.03	0.06	584
15-20		0.07	0.09	0.09	0.08	0.09	0.07	0.07		0.06	0.04			0.08	3,819
10-15		0.10	0.11	0.12	0.09	0.07	0.06	0.09	0.12	0.03	0.02	0.03	0.07	0.11	6,836
5-10	0.04	0.20	0.17	0.16	0.17	0.21	0.09	0.08	0.07	0.10	0.11		0.16	0.16	5,466
< 5 Years				0.38	0.20	0.24	0.11	0.19		0.11	0.08		0.12	0.20	1,239
Yield by Price	0.03	0.10	0.12	0.12	0.13	0.16	0.09	0.11	0.06	0.07	0.08	0.02	0.10	0.11	19,864
These only include subdivision that were included in the 2014 study.															

Housing Model Calculations

	Year										
	0	1	2	3	4	5	6	7	8	9	10
Single Family Housing	0	1	2	3	4	5	6	7	8	9	10
Single Family Housing	23,500	23,500	23,500	23,500	23,500	23,500	23,500	23,500	23,500	23,500	23,500
New Single Family Housing Units	600	600	600	600	600	600	600	600	600	600	600
New Single Family Housing Units	600	1200	1800	2400	3000	3000	3000	3000	3000	3000	3000
New Single Family Housing Units	0	0	0	0	0	600	1200	1800	2400	3000	3000
Total Single Family Housing	23,500	24,100	24,700	25,300	25,900	26,500	27,100	27,700	28,300	28,900	29,500
Non-single Family Housing											
Non-Single Family Housing	9419	9419	9419	9419	9419	9419	9419	9419	9419	9419	9419
Non-Single Family Housing Units	200	200	200	200	200	200	200	200	200	200	200
Total Non-Single Family Housing	9419	9,619	9,819	10,019	10,219	10,419	10,619	10,819	11,019	11,219	11,419
Yield from Existing 2016 Single Family Housing	0.110	0.110	0.108	0.102	0.096	0.090	0.083	0.080	0.077	0.074	0.071
Yield from New Single Family Housing	0.200	0.200	0.200	0.200	0.200	0.200	0.200	0.200	0.200	0.200	0.200
Yield from New Single Family Housing	0.160	0.160	0.160	0.160	0.160	0.160	0.160	0.160	0.160	0.160	0.160
Yield from Non-Single Family Housing	0.022	0.022	0.022	0.022	0.022	0.022	0.022	0.022	0.022	0.022	0.022
Enrollment from Existing 2016 Single Family Housing	2585	2549	2401	2254	2107	1959	1884	1808	1733	1657	1657
Enrollment from New Single Family Housing	120	240	360	480	600	600	600	600	600	600	600
Enrollment from New Single Family Housing	0	0	0	0	0	96	192	288	384	480	480
Enrollment from Non-Single Family Housing	212	216	220	225	229	234	238	242	247	251	251
Housing Model Total Enrollment	2791	2917	3005	2982	2959	2936	2889	2914	2939	2964	2988
Allocated K		1369	1411	1400	1389	1378	1356	1368	1380	1391	1403
Allocated 1st (K * 1.13)		1547	1594	1582	1570	1558	1533	1546	1559	1572	1585
Traditional Smoothing Model K-1 Enrollment											
Kindergarten		1307	1250	1297	1314	1320	1327	1333	1340	1347	1353
1st		1527	1527	1461	1516	1535	1543	1550	1558	1566	1574
Total		2834	2777	2758	2830	2855	2870	2883	2898	2913	2927
Difference between Housing Model and Smoothing Model											
Kindergarten		62	161	103	75	58	29	35	40	44	50
1st		20	67	121	54	23	-10	-4	1	6	11
Total		83	228	224	129	81	19	31	41	51	61

K & 1 Enrollment Forecast: Difference between Models



Elementary School Detail PK, K Classroom Analysis

School	Kindergarten					PK					SLC		Students/ Classroom
	Students	Sections	Students/ Section	Classrooms	Students/ Classroom	Students	Sections	Students/ Section	Classrooms	Students/ Classroom	Students	Classrooms	
ACES	72	4	18.0	2	36.0	87	9	9.7	5	17.4	4	1	4.0
AES	76	4	19.0	2	38.0	55	6	9.2	3	18.3	23	2	11.5
CES	119	6	19.8	3	39.7	44	4	11.0	2	22.0	8	1	8.0
FTES	101	4	25.3	2	50.5						6	1	6.0
GOES	78	4	19.5	2	39.0	37	3	12.3	2	18.5	17	2	8.5
HES	119	6	19.8	3	39.7						13	2	6.5
ISES	87	4	21.8	2	43.5						16	1	16.0
JCES	75	4	18.8	2	37.5	42	4	10.5	2	21.0	14	2	7.0
LTES	79	4	19.8	2	39.5	33	4	8.3	2	16.5	6	1	6.0
OCES	91	5	18.2	3	30.3						13	1	13.0
OMES	109	5	21.8	3	36.3						10	1	10.0
SRES	70	4	17.5	2	35.0	32	4	8.0	3	10.7	12	2	6.0
TRES	87	4	21.8	2	43.5	48	6	8.0	3	16.0	6	1	6.0
WCES	79	4	19.8	2	39.5	10	1	10.0	1	10.0	7	1	7.0
WRES	77	4	19.3	2	38.5	60	6	10.0	4	15.0	14	2	7.0
Total	1319	66	20.0	34	38.8	448	47	9.5	27	16.6	169	21	8.0

[illegible]

Elementary School Detail: Traditional Model

EX. A ~ November 10, 2016
Page 14 of 49

Usage Factors											
	16-17*	17-18*	18-19*	19-20*	20-21*	21-22*	22-23*	23-24*	24-25*	25-26*	26-27*
Classrooms per elementary*	28	28	28	28	28	28	28	28	28	28	28
Elementary Schools	15	15	16	16	16	16	16	16	16	16	16
Seats per classroom design capacity	25	25	25	25	25	25	25	25	25	25	25
Total Classrooms	422	422	450	450	450	450	450	450	450	450	450
Total Classrooms Needed (2016-17 actual)	403	407	415	421	427	429	429	432	433	432	434
PK Student/Classroom	16.6	18.0	18.0	18.0	18.0	18.0	18.0	18.0	18.0	18.0	18.0
Kindergarten Student/Classroom	38.4	38.4	38.4	38.4	38.4	38.4	38.4	38.4	38.4	38.4	38.4
Grade 1 Student/Section Ratio	21.0	21.0	21.0	21.0	21.0	21.0	21.0	21.0	21.0	21.0	21.0
Grade 2 Student/Section Ratio	22.0	22.0	22.0	22.0	22.0	22.0	22.0	22.0	22.0	22.0	22.0
3-5 Student/Section Ratio***	23.0	23.0	23.0	23.0	23.0	23.0	23.0	23.0	23.0	23.0	23.0
Projected Enrollment Based on Traditional Smoothing											
Grade	16-17*	17-18*	18-19*	19-20*	20-21*	21-22*	22-23*	23-24*	24-25*	25-26*	26-27*
Pre-School	448	428	445	462	442	444	447	449	451	453	456
Kindergarten	1319	1261	1309	1360	1302	1309	1315	1322	1328	1335	1342
Grade 1	1489	1546	1479	1535	1594	1527	1534	1542	1550	1557	1565
Grade 2	1487	1556	1616	1546	1604	1666	1595	1603	1611	1619	1628
Grade 3-5	4712	4730	4892	4989	5058	5108	5157	5217	5217	5155	5181
Total Grades PK - 5	9,455	9,521	9,741	9,892	10,000	10,054	10,048	10,133	10,157	10,119	10,172
Elementary School Seat Capacity											
Wyandot Run	700	700	700	700	700	700	700	700	700	700	700
Alum Creek	700	700	700	700	700	700	700	700	700	700	700
Arrowhead	675	675	675	675	675	675	675	675	675	675	675
Scioto Ridge	675	675	675	675	675	675	675	675	675	675	675
Oak Creek	675	675	675	675	675	675	675	675	675	675	675
Tyler Run	675	675	675	675	675	675	675	675	675	675	675
Indian Springs	675	675	675	675	675	675	675	675	675	675	675
Walnut Creek	675	675	675	675	675	675	675	675	675	675	675
Glen Oak	675	675	675	675	675	675	675	675	675	675	675
Olentangy Meadows	675	675	675	675	675	675	675	675	675	675	675
Liberty Tree	675	675	675	675	675	675	675	675	675	675	675
Johnnycake Corners	675	675	675	675	675	675	675	675	675	675	675
Freedom Trail	675	675	675	675	675	675	675	675	675	675	675
Cheshire	675	675	675	675	675	675	675	675	675	675	675
Heritage	675	675	675	675	675	675	675	675	675	675	675
Design Elementary Seat Capacity	10,175	10,175	10,175	10,175	10,175	10,175	10,175	10,175	10,175	10,175	10,175
Total Draw on PK-5 Seats	10,117	10,164	10,384	10,533	10,678	10,731	10,720	10,811	10,836	10,794	10,851
Design Seat Capacity - PK-5 Seat Draw	58	11	(209)	(358)	(503)	(556)	(545)	(636)	(661)	(619)	(676)
Avg. Enrollment/Elementary School	630	635	649	659	667	670	670	676	677	675	678
Adding Additional ES Seat Capacity Facility #1	0	0	675	675	675	675	675	675	675	675	675
Design Seat Capacity - PK-5 Seat Draw	58	11	466	317	172	119	130	39	14	56	(1)
Avg. Enrollment with add'l capacity	630	635	609	618	625	628	628	633	635	632	636

Elementary School Detail: 600 Housing Model

EX. A ~ November 10, 2016
Page 15 of 49

Usage Factors											
	16-17*	17-18*	18-19*	19-20*	20-21*	21-22*	22-23*	23-24*	24-25*	25-26*	26-27*
Classrooms per elementary*	28	28	28	28	28	28	28	28	28	28	28
Elementary Schools	15	15	16	16	16	16	16	16	16	16	16
Seats per classroom design capacity	25	25	25	25	25	25	25	25	25	25	25
Total Classrooms	422	422	450	450	450	450	450	450	450	450	450
Total Classrooms Needed (2016-17 actual)	403	410	423	428	434	436	435	433	433	433	435
PK Student/Classroom	16.6	18.0	18.0	18.0	18.0	18.0	18.0	18.0	18.0	18.0	18.0
Kindergarten Student/Classroom	38.8	38.4	38.4	38.4	38.4	38.4	38.4	38.4	38.4	38.4	38.4
Grade 1 Student/Section Ratio	21.0	21.0	21.0	21.0	21.0	21.0	21.0	21.0	21.0	21.0	21.0
Grade 2 Student/Section Ratio	22.0	22.0	22.0	22.0	22.0	22.0	22.0	22.0	22.0	22.0	22.0
3-5 Student/Section Ratio***	23.0	23.0	23.0	23.0	23.0	23.0	23.0	23.0	23.0	23.0	23.0
Projected Enrollment Based on Housing Model											
Grade	16-17*	17-18*	18-19*	19-20*	20-21*	21-22*	22-23*	23-24*	24-25*	25-26*	26-27*
Pre-School	448	465	479	476	472	468	461	465	469	473	477
Kindergarten	1319	1369	1411	1400	1389	1378	1356	1368	1380	1391	1403
Grade 1	1489	1547	1594	1582	1570	1558	1533	1546	1559	1572	1585
Grade 2	1487	1542	1602	1651	1639	1626	1613	1588	1601	1615	1629
Grade 3-5	4712	4714	4852	4931	5105	5210	5238	5197	5143	5116	5116
Total Grades PK - 5	9,455	9,637	9,938	10,040	10,175	10,240	10,201	10,164	10,152	10,167	10,210
Design Elementary Seat Capacity	10,175	10,175	10,175	10,175	10,175	10,175	10,175	10,175	10,175	10,175	10,175
Total Draw on PK-5 Seats	10,109	10,254	10,575	10,690	10,839	10,912	10,873	10,829	10,814	10,828	10,873
Design Seat Capacity - PK-5 Seat Draw	66	(79)	(400)	(515)	(664)	(737)	(698)	(654)	(639)	(653)	(698)
Avg. Enrollment/Elementary School	630	642	663	669	678	683	680	678	677	678	681
Adding Additional ES Seat Capacity-Facility #1	0	0	675	675	675	675	675	675	675	675	675
Design Seat Capacity - PK-5 Seat Draw	66	(79)	275	160	11	(62)	(23)	21	36	22	(23)
Avg. Enrollment with add'l capacity	630	642	621	627	636	640	638	635	634	635	638

Elementary School Detail: Housing Model with SLC

EX. A ~ November 10, 2016
Page 16 of 49

Usage Factors											
	16-17*	17-18*	18-19*	19-20*	20-21*	21-22*	22-23*	23-24*	24-25*	25-26*	26-27*
Classrooms per elementary*	28	28	28	28	28	28	28	28	28	28	28
Elementary Schools	15	15	16	16	16	16	16	16	16	16	16
Seats per classroom design capacity	25	25	25	25	25	25	25	25	25	25	25
Total Classrooms	422	422	450	450	450	450	450	450	450	450	450
Total Classrooms Needed (2016-17 actual)	403	403	416	420	426	429	427	426	425	426	427
SLC Students/Classroom	8.0	8.0	8.0	8.0	8.0	8.0	8.0	8.0	8.0	8.0	8.0
PK Student/Classroom	16.6	18.0	18.0	18.0	18.0	18.0	18.0	18.0	18.0	18.0	18.0
Kindergarten Student/Classroom	38.4	38.4	38.4	38.4	38.4	38.4	38.4	38.4	38.4	38.4	38.4
Grade 1 Student/Section Ratio	21.0	21.0	21.0	21.0	21.0	21.0	21.0	21.0	21.0	21.0	21.0
Grade 2 Student/Section Ratio	22.0	22.0	22.0	22.0	22.0	22.0	22.0	22.0	22.0	22.0	22.0
3-5 Student/Section Ratio***	23.0	23.0	23.0	23.0	23.0	23.0	23.0	23.0	23.0	23.0	23.0
Projected Enrollment Based on Housing Model											
Grade	16-17*	17-18*	18-19*	19-20*	20-21*	21-22*	22-23*	23-24*	24-25*	25-26*	26-27*
Specialized Learning Centers	169	171	174	177	179	180	180	182	182	181	182
Pre-School	448	465	479	476	472	468	461	465	469	473	477
Kindergarten net of SLC	1293	1343	1384	1373	1361	1350	1328	1340	1352	1363	1375
Grade 1 net of SLC	1469	1527	1573	1561	1549	1537	1512	1524	1537	1551	1563
Grade 2 net of SLC	1454	1509	1568	1616	1604	1591	1578	1553	1565	1580	1593
Grade 3-5 net of SLC	4622	4623	4759	4837	5009	5114	5142	5100	5046	5019	5019
Total Grades PK - 5	9,286	9,637	9,938	10,040	10,175	10,240	10,201	10,164	10,152	10,167	10,210
Design Elementary Seat Capacity	10,175	10,175	10,175	10,175	10,175	10,175	10,175	10,175	10,175	10,175	10,175
Total Draw on PK-5 Seats	10,466	10,606	10,935	11,055	11,209	11,284	11,245	11,204	11,190	11,202	11,249
Design Seat Capacity - PK-5 Seat Draw	(291)	(431)	(760)	(880)	(1,034)	(1,109)	(1,070)	(1,029)	(1,015)	(1,027)	(1,074)
Avg. Enrollment/Elementary School	619	642	663	669	678	683	680	678	677	678	681
Adding Additional ES Seat Capacity-Facility #1	0	0	675	675	675	675	675	675	675	675	675
Design Seat Capacity - PK-5 Seat Draw	(291)	(431)	(85)	(205)	(359)	(434)	(395)	(354)	(340)	(352)	(399)
Avg. Enrollment with add'l capacity	619	642	621	627	636	640	638	635	634	635	638

Elementary School Observations/Conclusions

- Facility Committee recommends adoption of the Housing Model.
- Pre-K enrollment continues to increase from 318 in 2014 to 372 in 2015 to 407 in September then to 448 on November 2 of this year. Last year there were 24 classrooms devoted to PK, this year there are 27 meaning that 96% of an elementary school are devoted to PK.
- Specialized Learning Centers (SLC) had not been considered in previous reports. There are 21 classrooms devoted to SLC (75%) of an elementary. When combined with the PK program, nearly 1 3/4 elementary schools are being devoted to programs that were unanticipated when considering building capacities.
- In both the Traditional Smoothing Model and the Housing Model when including SLC, additional seat capacity is needed in all years of the plan. Even when adding capacity of 675 seats in 18-19, elementary schools will remain over capacity.
- Board action is recommended to add ES capacity. Board and Administrative guidance is needed for options to consider.

Middle School Detail

Both Models

EX. A ~ November 10, 2016
Page 18 of 49

Using Traditional Smoothing Enrollment Model											
Projected Enrollment Grade	16-17*	17-18*	18-19*	19-20*	20-21*	21-22*	22-23*	23-24*	24-25*	25-26*	26-27*
Middle School	5,029	5,160	5,083	5,119	5,137	5,315	5,421	5,493	5,548	5,604	5,665
Middle School Building Capacity											
Shanahan Middle School	1200	1200	1200	1200	1200	1200	1200	1200	1200	1200	1200
Liberty Middle School	1050	1050	1050	1050	1050	1050	1050	1050	1050	1050	1050
Orange Middle School	1050	1050	1050	1050	1050	1050	1050	1050	1050	1050	1050
Hyatts Middle School	1100	1100	1100	1100	1100	1100	1100	1100	1100	1100	1100
Berkshire Middle School	1100	1100	1100	1100	1100	1100	1100	1100	1100	1100	1100
Middle School #6	0	0	0	0	0	0	0	0	0	0	0
Total 6-8 Capacity	5500	5500	5500	5500	5500	5500	5500	5500	5500	5500	5500
6-8 (Capacity-Enrollment)	471	340	417	381	363	185	79	7	(48)	(104)	(165)
Avg. Enrollment/Middle School	1006	1032	1017	1024	1027	1063	1084	1099	1110	1121	1133
Using Housing Model @ 600 Building Permits											
Projected Enrollment Grade	16-17*	17-18*	18-19*	19-20*	20-21*	21-22*	22-23*	23-24*	24-25*	25-26*	26-27*
Middle School	5,029	5,166	5,080	5,101	5,104	5,254	5,338	5,528	5,641	5,670	5,627
Middle School Building Capacity											
Shanahan Middle School	1200	1200	1200	1200	1200	1200	1200	1200	1200	1200	1200
Liberty Middle School	1050	1050	1050	1050	1050	1050	1050	1050	1050	1050	1050
Orange Middle School	1050	1050	1050	1050	1050	1050	1050	1050	1050	1050	1050
Hyatts Middle School	1100	1100	1100	1100	1100	1100	1100	1100	1100	1100	1100
Berkshire Middle School	1100	1100	1100	1100	1100	1100	1100	1100	1100	1100	1100
Total 6-8 Capacity	5500	5500	5500	5500	5500	5500	5500	5500	5500	5500	5500
6-8 (Capacity-Enrollment)	471	334	420	399	396	246	162	(28)	(141)	(170)	(127)
Avg. Enrollment/Middle School	1006	1033	1016	1020	1021	1051	1068	1106	1128	1134	1125
Adding Additional MS Capacity-MS #6								0	0	0	0
6-8 (Capacity-Enrollment)	471	334	420	399	396	246	162	(28)	(141)	(170)	(127)
Avg. Enrollment with add'l capac	1006	1033	1016	1020	1021	1051	1068	1106	1128	1134	1125

Middle School Observations/Conclusions

- Based on administrative guidance, middle school capacities have been increased.
- By increasing the target building capacity, middle school needs are met until 23-24.
- No Board action is requested at this time but administrative diligence is needed in monitoring the ability of our middle schools to accommodate student needs at the stretch capacities.

High School Detail Both Models

Using Traditional Smoothing Enrollment Model											
Projected Enrollment	16-17*	17-18*	18-19*	19-20*	20-21*	21-22*	22-23*	23-24*	24-25*	25-26*	26-27*
High School	5,903	6,258	6,602	6,882	7,069	7,127	7,182	7,181	7,287	7,543	7,573
High School Building Capacity	Capacity @ 1800 for all current High Schools including HS#4										
Olentangy High School	1800	1800	1800	1800	1800	1800	1800	1800	1800	1800	1800
Olentangy Liberty HS	1800	1800	1800	1800	1800	1800	1800	1800	1800	1800	1800
Olentangy Orange HS	1800	1800	1800	1800	1800	1800	1800	1800	1800	1800	1800
Olentangy Berlin HS	0	0	1800	1800	1800	1800	1800	1800	1800	1800	1800
Total 9-12 Capacity	5400	5400	7200	7200	7200	7200	7200	7200	7200	7200	7200
9-12 (Capacity - Enrollment)	(503)	(858)	598	318	131	73	18	19	(87)	(343)	(373)
Avg. Enrollment/High School	1968	2086	1651	1721	1767	1782	1796	1795	1822	1886	1893
Using Housing Model @ 600 Building Permits											
Projected Enrollment	16-17*	17-18*	18-19*	19-20*	20-21*	21-22*	22-23*	23-24*	24-25*	25-26*	26-27*
High School	5,903	6,270	6,614	6,894	7,080	7,127	7,167	7,146	7,218	7,443	7,595
High School Building Capacity	Capacity @ 1800 for all current High Schools including HS#4										
Olentangy High School	1800	1800	1800	1800	1800	1800	1800	1800	1800	1800	1800
Olentangy Liberty HS	1800	1800	1800	1800	1800	1800	1800	1800	1800	1800	1800
Olentangy Orange HS	1800	1800	1800	1800	1800	1800	1800	1800	1800	1800	1800
Olentangy Berlin HS	0	0	1800	1800	1800	1800	1800	1800	1800	1800	1800
Total 9-12 Capacity	5400	5400	7200	7200	7200	7200	7200	7200	7200	7200	7200
9-12 (Capacity - Enrollment)	(503)	(870)	586	306	120	73	33	54	(18)	(243)	(395)
Avg. Enrollment/High School	1968	2090	1654	1724	1770	1782	1792	1787	1805	1861	1899

High School Observations/Conclusions

- High School capacity is adequate at this time with Olentangy Berlin coming online in 18-19. However, in both models, in 25-26. the average high school enrollment is 1,880, exceeding the target maximum enrollment
- No action Board action is needed at this time.



OLENTANGY | Local School District

OLENTANGY LOCAL SCHOOLS

BOARD MEETING: STUDENT POTENTIAL UPDATE

NOVEMBER 10, 2016

Why do we do we look at this?

- ✓ The two different enrollment projection models project student enrollment over the next 10 years.
- ✓ The student potential models forecast enrollment over the next 100 years.
- ✓ This also allows us to estimate how many students may result from a future subdivision.
- ✓ THESES ARE COMPLETELY SEPARATE STUDIES AND SHOULD NOT BE COMBINED IN ANY WAY!!!

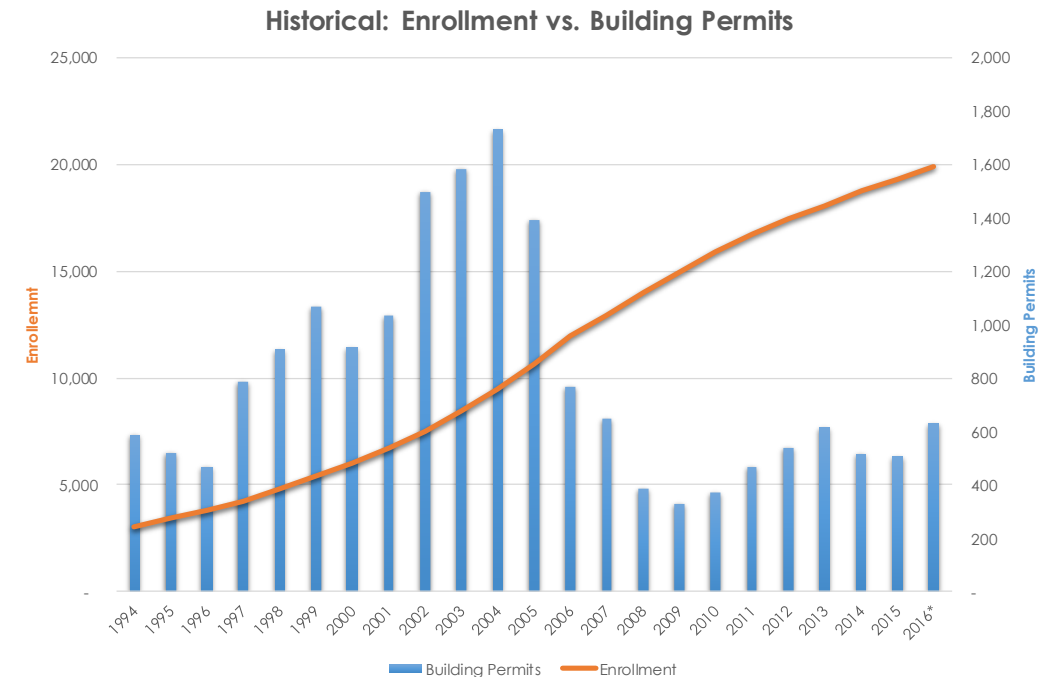
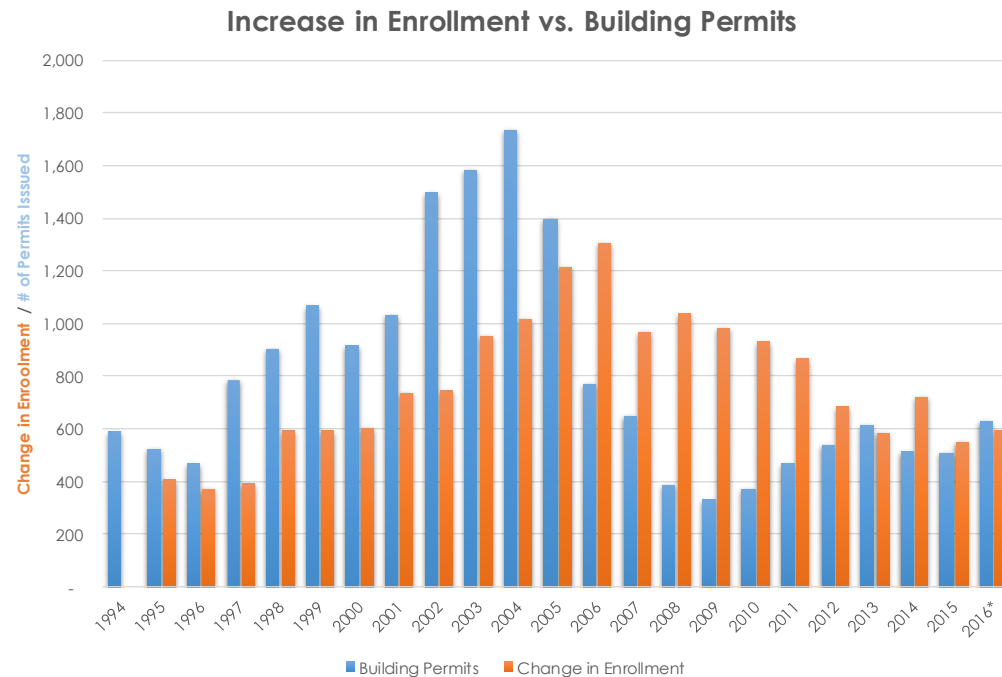
What has changed since last time?

- ✓ 2015 redistricting process
 - ✓ Alleviated over-utilization @ CES, OMES, SMS
 - ✓ Aligned feeder patterns for SRES -> OMS
- ✓ Bond issue for Berlin High School passed.
 - ✓ School will open in the 2018-19 school year
- ✓ Lots of land has been rezoned from Farm-Residential and Agricultural to Single-Family.
 - ✓ **2,022 acres have been rezoned since 2014, this equates to 2,698 single family units and 732 multi-family units.**
- ✓ Housing Yields have slightly increased
- ✓ Building permits are on the rise.

City / Township	Maximum Density
Liberty	1.5 NDA
Berkshire	1.25 NDA
Berlin	1.50 NDA
Concorde	1.50 NDA
Genoa	2.2 NDA
Orange	2.0 GRA
Columbus City	6.0 NDA
Delaware City	3.125 NDA
Powell City	1.7 GRA
Village of Sunbury	3.0 GRA

Building Permits

Historical: Building Permits vs. Increase in Enrollment



Methodology

- ✓ Based on historical observations and comparisons with adjacent school districts, we have determined that typical single family subdivisions yields fluctuate over time in predictable pattern.

Single Family Yields from 2014 (Previous Study)

2014 K-12 Subdivision Yields Crossreferenced by Median Age and Current Assessed Value														
	Average Assessed Value													Yield by Age
	< 150K	150K-200K	200K-250K	250K-300K	300K-350K	350K-400K	400K-450K	450K-500K	500K-550K	550K-600K	600K-650K	650K-700K	> 700K	
Median Subdivision Age														
> 35	0.52	0.28	0.18		0.28									0.26
30-35				0.41					0.12			0.33		0.36
25-30		0.52		0.55	0.40		0.56	0.42	0.41			0.28		0.49
20-25			0.63	0.63			0.67	0.50	0.49				0.26	0.55
15-20		0.47	0.63	0.84	0.79	1.04	0.94	0.59		0.47	0.70			0.72
10-15		0.68	0.86	1.02	0.88	0.66	1.03	0.94	0.79	0.75	0.78	0.26	0.67	0.89
5-10	0.46	0.51	0.86	0.94	0.96	0.87	1.03	1.19	1.08	0.69	1.35		0.81	0.91
< 5 Years				0.45	0.56	0.59	0.79	0.83		0.42	0.33		0.61	0.63
Yield by Price	0.48	0.57	0.79	0.91	0.83	0.85	0.90	0.88	0.68	0.55	1.07	0.28	0.58	0.80

Note*: all aggregated student yields and housing stock statistics were calculated as weighted averages based on total number of occupied units.

Units 2014	< 150K	150K-200K	200K-250K	250K-300K	300K-350K	350K-400K	400K-450K	450K-500K	500K-550K	550K-600K	600K-650K	650K-700K	> 700K	Grand Total
> 35	23	69	104		105									301
30-35				107					17			24		148
25-30		528		495	87		95	19	158			109		1,491
20-25			62	176			93	58	124				73	586
15-20		313	628	669	1,027	327	145	155		479	71			3,814
10-15		860	1,579	2,924	724	173	114	35	94	143	82	93	45	6,866
5-10	71	466	863	711	1,630	662	323	253	161	109	190		81	5,520
< 5 Years				64	373	147	73	186		38	6		23	910
Grand Total	94	2,236	3,236	5,146	3,946	1,309	843	706	554	769	349	226	222	19,636

Single Family Yields from 2016 (Using 2014 Analysis Bins)

2016 Using 2014 Bins K-12 Subdivision Yields Crossreferenced by Median Age and Current Assessed Value														
	Average Assessed Value													Yield by Age
	< 150K	150K-200K	200K-250K	250K-300K	300K-350K	350K-400K	400K-450K	450K-500K	500K-550K	550K-600K	600K-650K	650K-700K	> 700K	
Median Subdivision Age	> 35	0.70	0.27	0.36		0.32								0.35
	30-35				0.56				0.19			0.65		0.52
	25-30		0.45		0.56	0.46		0.54	0.42	0.35		0.21		0.47
	20-25			0.65	0.53			0.51	0.37	0.46			0.34	0.49
	15-20		0.48	0.60	0.72	0.74	0.88	0.88	0.52		0.47	0.65		0.66
	10-15		0.67	0.86	1.02	0.93	0.62	1.09	0.89	0.99	0.71	0.60	0.29	0.89
	5-10	0.49	0.84	0.97	1.02	1.10	1.12	1.06	1.14	1.03	0.83	1.41	1.12	0.92
	< 5 Years				1.05	0.96	0.99	0.88	1.15		0.63	0.92	0.71	0.97
Yield by Price		0.52	0.55	0.78	0.91	0.86	0.86	0.89	0.94	0.69	0.55	1.02	0.29	0.84

Note*: all aggregated student yields and housing stock statistics were calculated as weighted averages based on total number of occupied units.

Units 2016	< 150K	150K-200K	200K-250K	250K-300K	300K-350K	350K-400K	400K-450K	450K-500K	500K-550K	550K-600K	600K-650K	650K-700K	> 700K	Grand Total
> 35	23	67	144		105									339
30-35				55					16			23		94
25-30		524		495	87		95	19	158			109		1,487
20-25			62	173			92	59	125				73	584
15-20		313	629	669	1,030	327	145	156		479	71			3,819
10-15		860	1,575	2,918	703	175	114	35	94	144	82	93	43	6,836
5-10	71	372	739	819	1,698	616	326	255	164	111	193		102	5,466
< 5 Years				123	464	181	145	216		64	12		34	1,239
Grand Total	94	2,136	3,149	5,252	4,087	1,299	917	740	557	798	358	225	252	19,864

Single Family Yields from 2016 (Using 2016 Analysis Bins)

2016 Using 2016 Bins K-12 Subdivision Yields Crossreferenced by Median Age and Current Assessed Value														
	Average Assessed Value													Yield by Age
	< 150K	150K-200K	200K-250K	250K-300K	300K-350K	350K-400K	400K-450K	450K-500K	500K-550K	550K-600K	600K-650K	650K-700K	> 700K	
Median Subdivision Age	> 35	0.70	0.27	0.27	0.47	0.32				0.19				0.35
	30-35		0.45		0.55	0.54		0.42	0.35				0.65	0.48
	25-30			1.25	0.60	0.45		0.50	0.53			0.21	0.11	0.45
	20-25	0.37	0.48	0.61	0.66	0.78	0.67	0.70	0.50	0.46	0.47	0.65	0.42	0.60
	15-20		0.61	0.85	0.90	0.89	0.65		0.69		0.78		0.51	1.22
	10-15		0.79	0.98	1.08	1.07	1.05	1.06	0.97	1.02	0.63	1.41	0.41	1.18
	5-10	0.49		0.79		1.04	1.38	1.00	1.26	1.25	0.67	1.13		0.94
	< 5 Years	0.76		0.95	0.74	0.91	1.01	0.83		0.92				0.68
Yield by Price		0.56	0.61	0.85	0.89	0.92	0.97	0.85	1.01	0.65	0.54	1.19	0.36	0.77

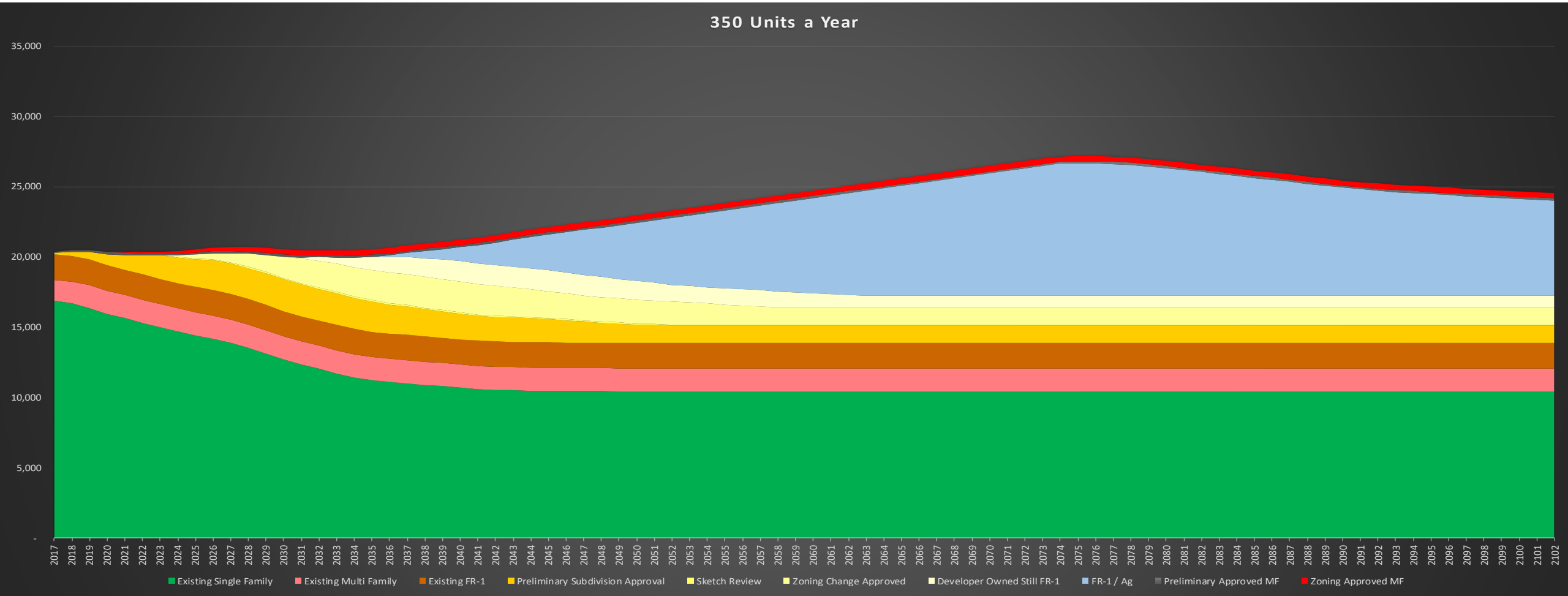
Note*: all aggregated student yields and housing stock statistics were calculated as weighted averages based on total number of occupied units.

Units 2016	< 150K	150K-200K	200K-250K	250K-300K	300K-350K	350K-400K	400K-450K	450K-500K	500K-550K	550K-600K	600K-650K	650K-700K	> 700K	Grand Total
> 35	23	67	78	66	105				16					355
30-35		524		396	128			19	158				23	1,248
25-30			4	99	115		137		89			109	18	571
20-25	145	313	691	601	485	258	254	28	169	474	71		55	3,544
15-20		483	1,508	1,232	1,141	175		13		76		79	9	4,716
10-15		749	1,245	1,840	1,555	893	393	293	258	68	193	130	38	7,655
5-10	71		77		336	149	11	163	4	72	39		94	1,016
< 5 Years	148		522	125	254	144	163		12				25	1,393
Grand Total	135	2,235	2,539	3,769	3,919	1,172	1,037	853	723	1,310	445	154	1,575	20,498

350 Units a Year

Maximum: 27,177
Year: 2075

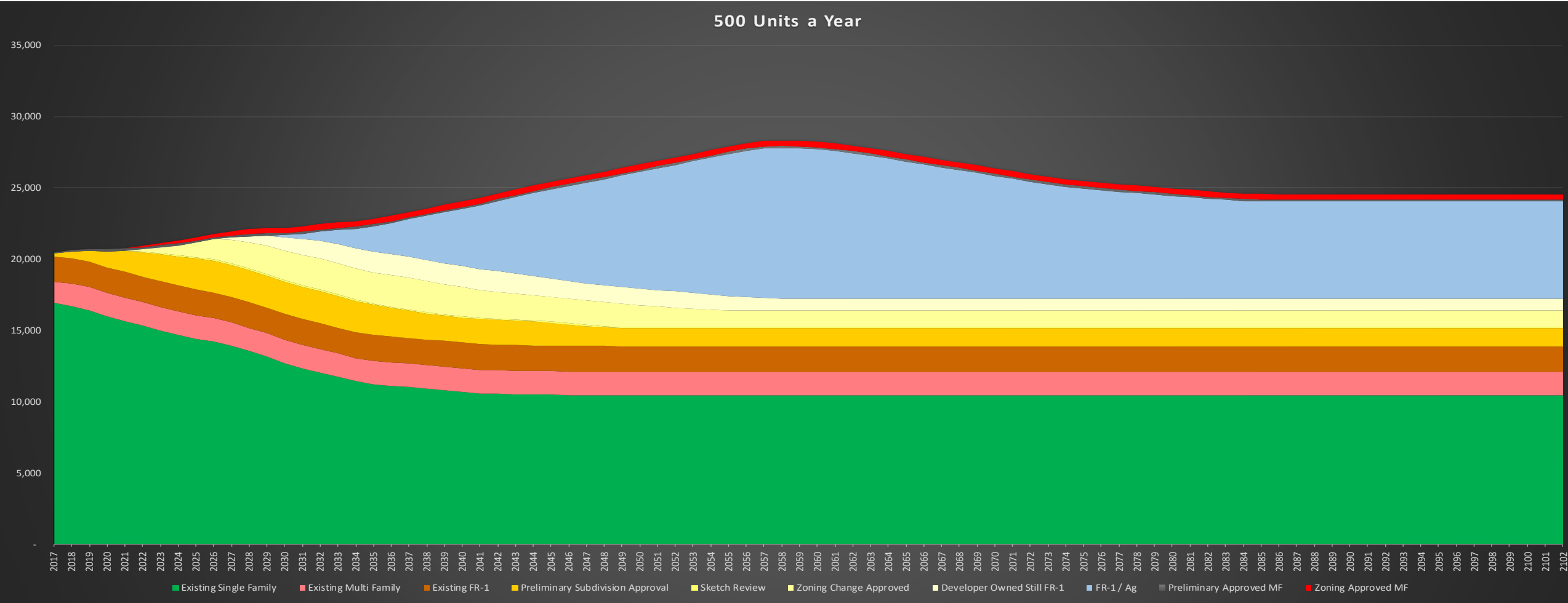
Mature: 24,549
Year: 2103



500 Units a Year

Maximum: 28,299
Year: 2058

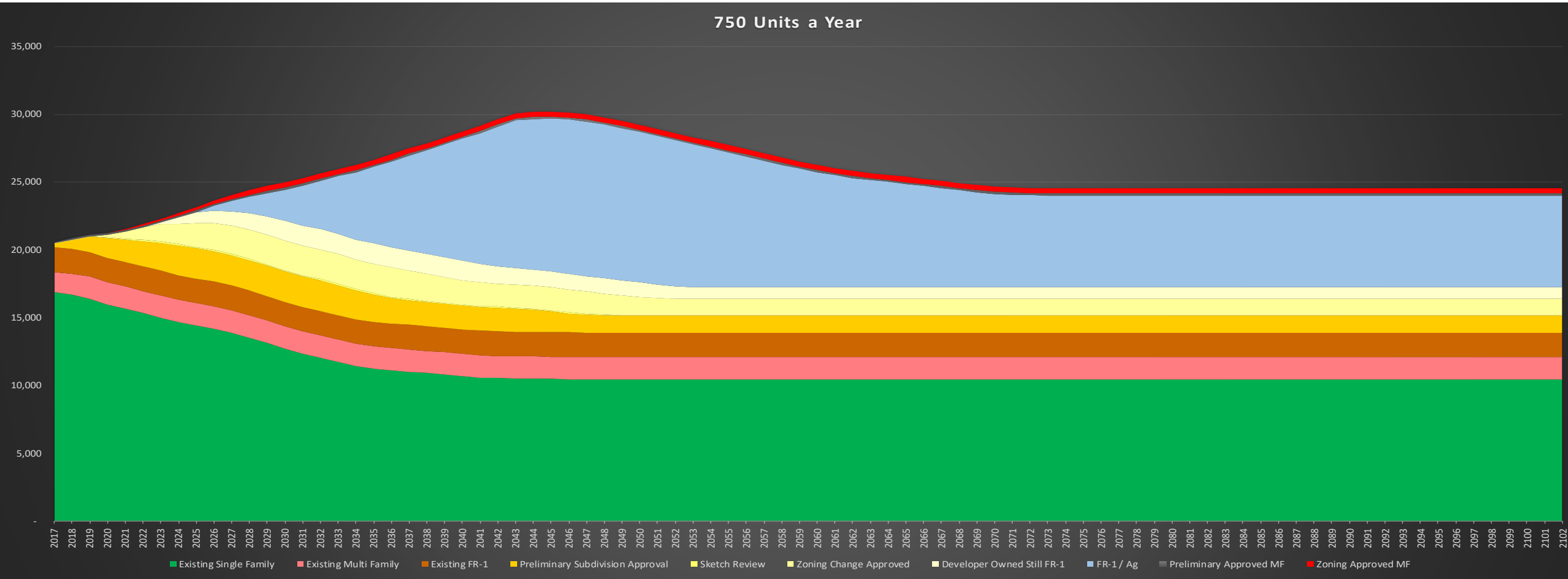
Mature: 24,549
Year: 2086



750 Units a Year

Maximum: 30,213
Year: 2045

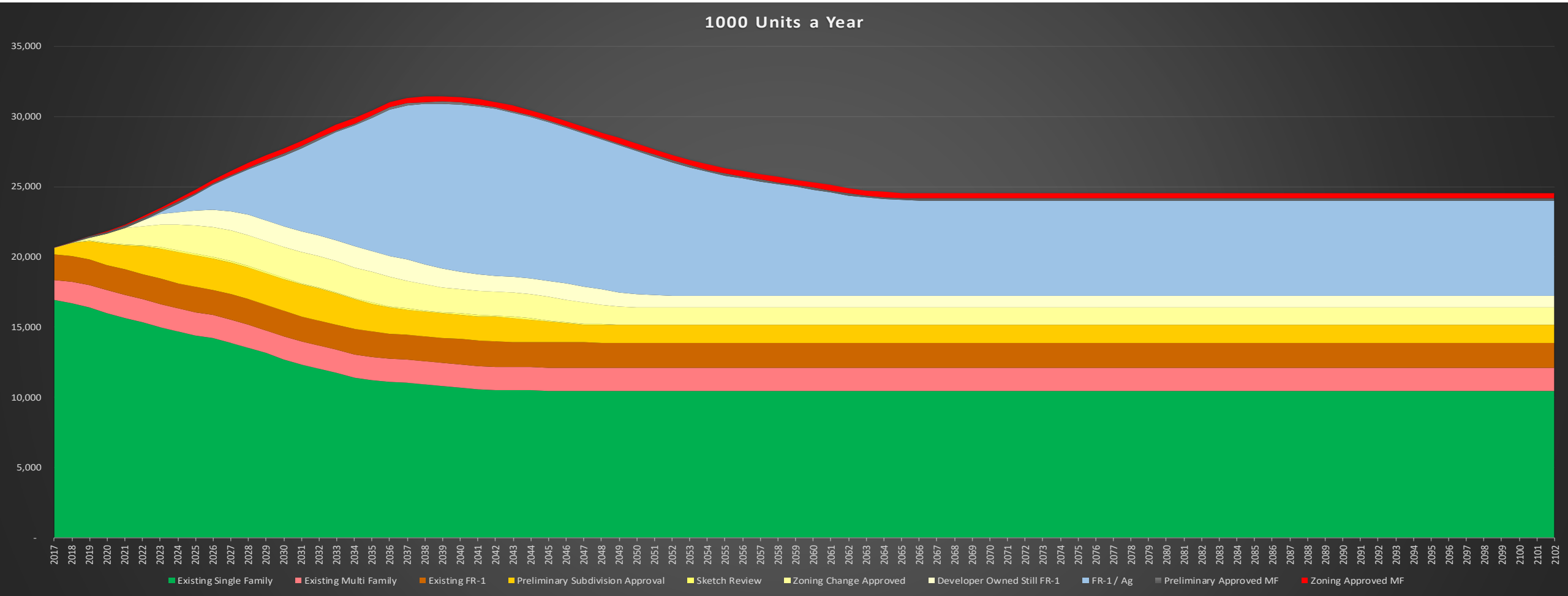
Mature: 24,549
Year: 2073



1,000 Units a Year

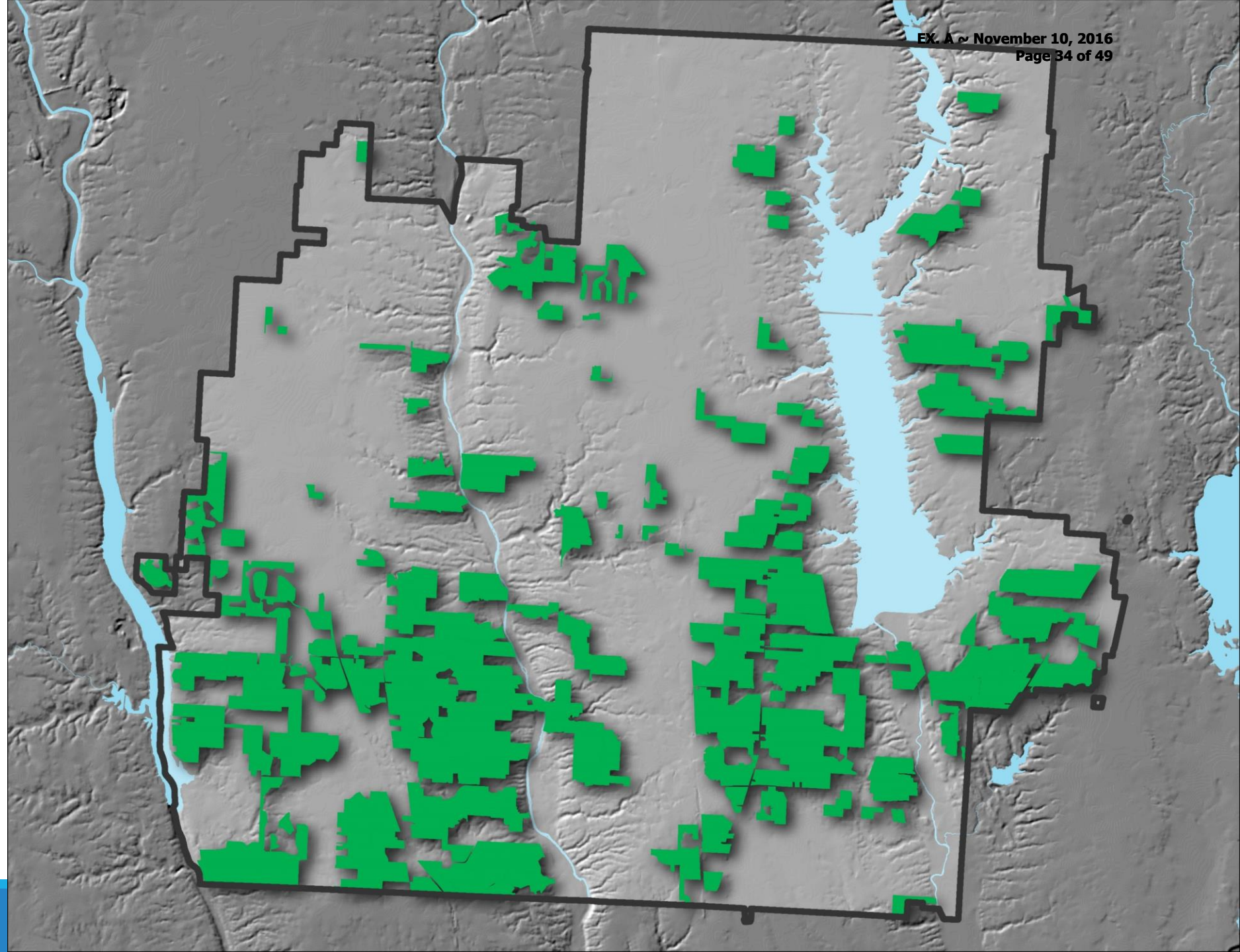
Maximum: 31,442
Year: 2039

Mature: 24,549
Year: 2066



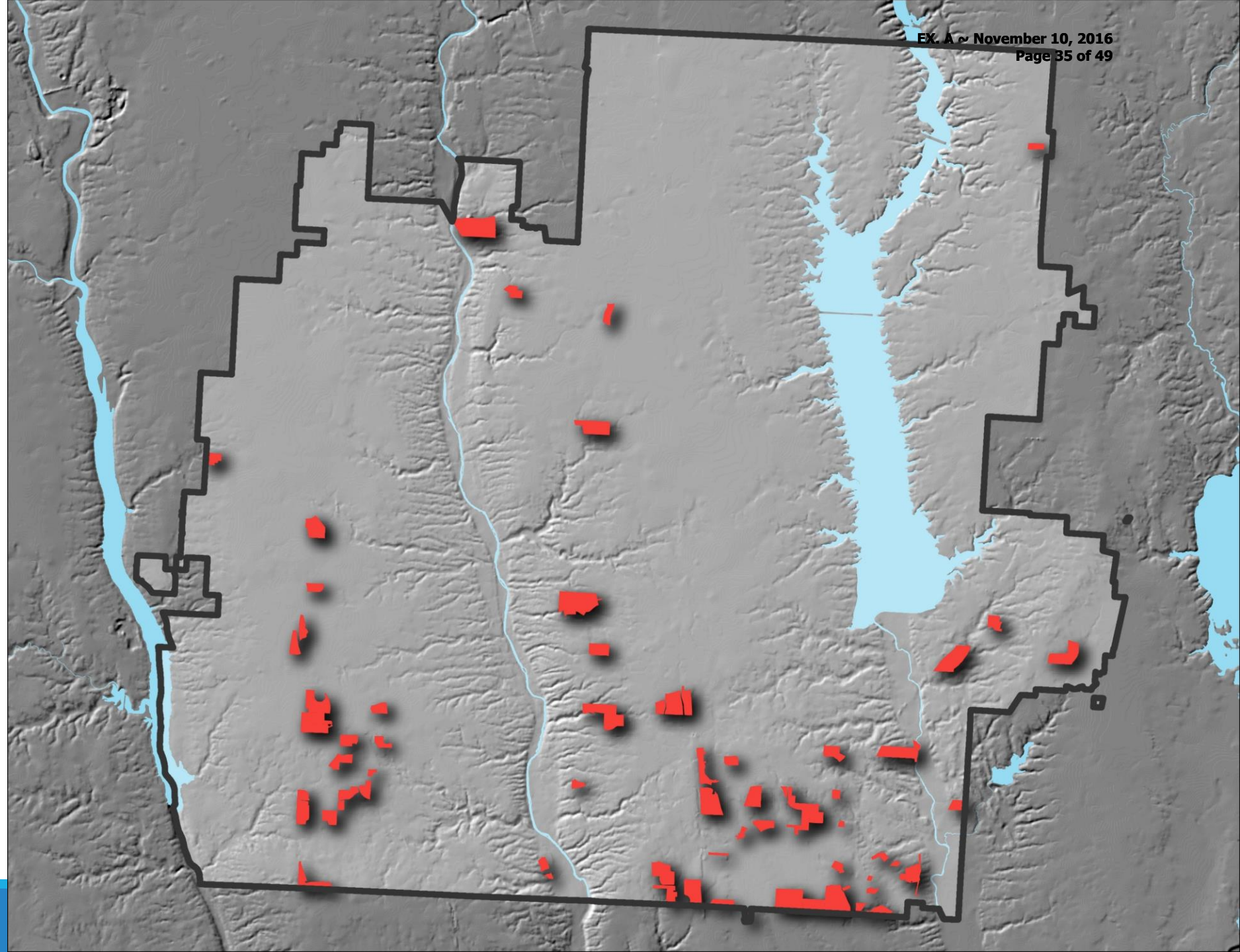
Existing Single-Family

- 20,514 Occupied Units
- 535 Permitted Vacant Units
- 17,113 Students
- Mature Year: 2049
- Mature Enrollment:10,436



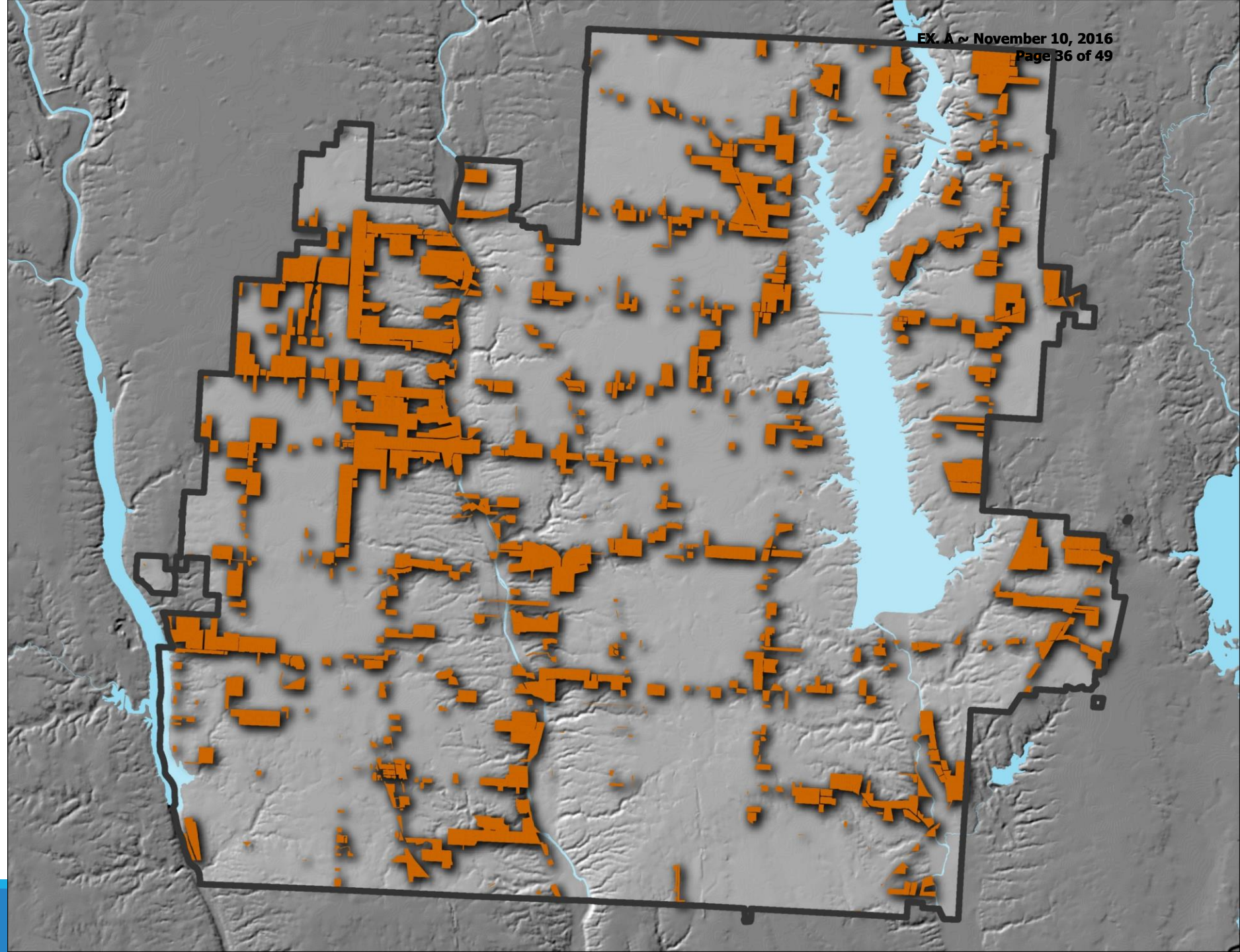
Existing Multi-Family

- 7,334 Occupied Units
- 240 Permitted Vacant Units
- 1,430 Students



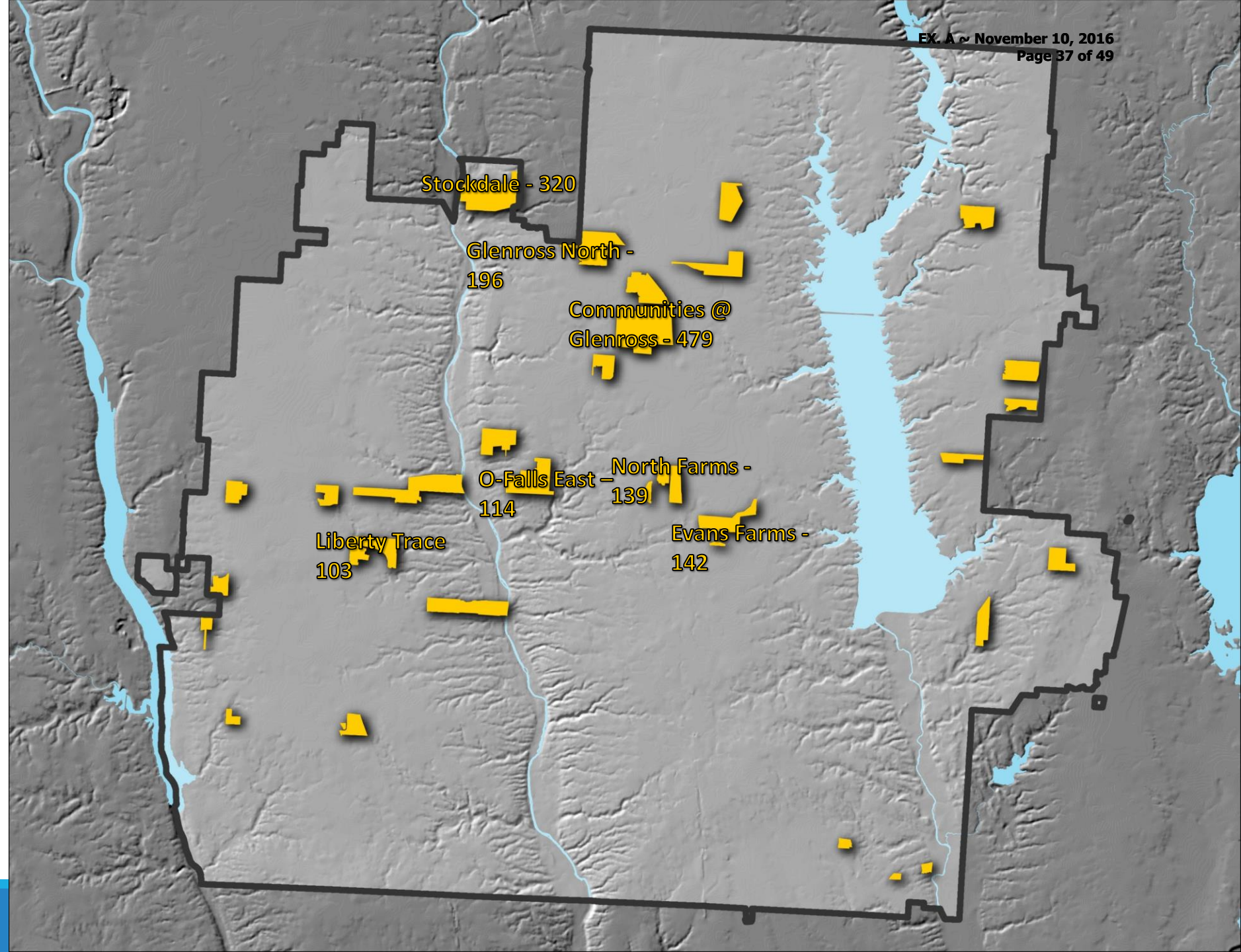
Existing FR-1 Owner Occupied

- 2,597 Occupied Units
- 190 Permitted Vacant Units
- 1,185 Students
- Estimated to decrease to 1,000



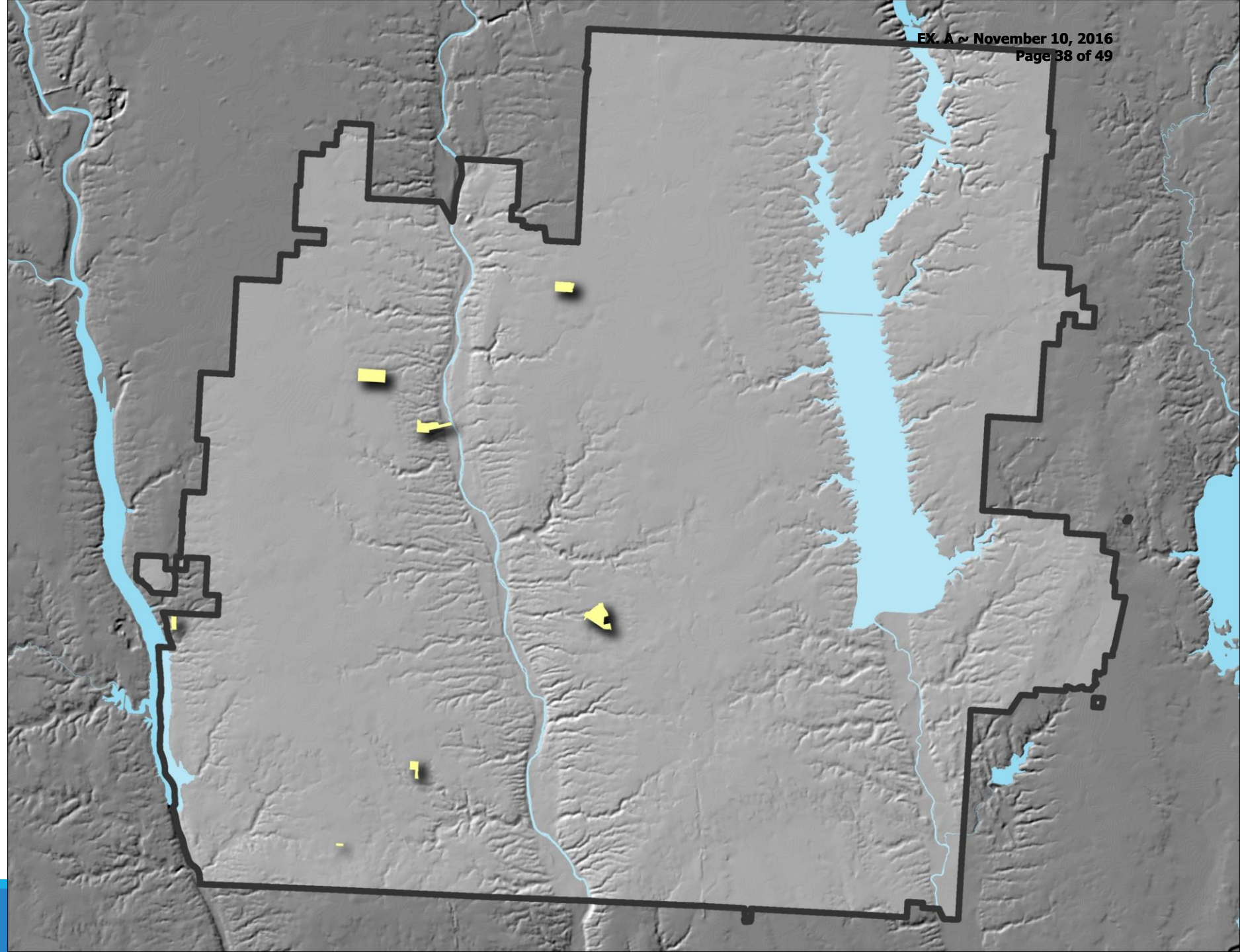
Preliminary Subdivision Approval

- 2,503 Single Family Units
- 732 Multi-Family Units
- 1,802 acres



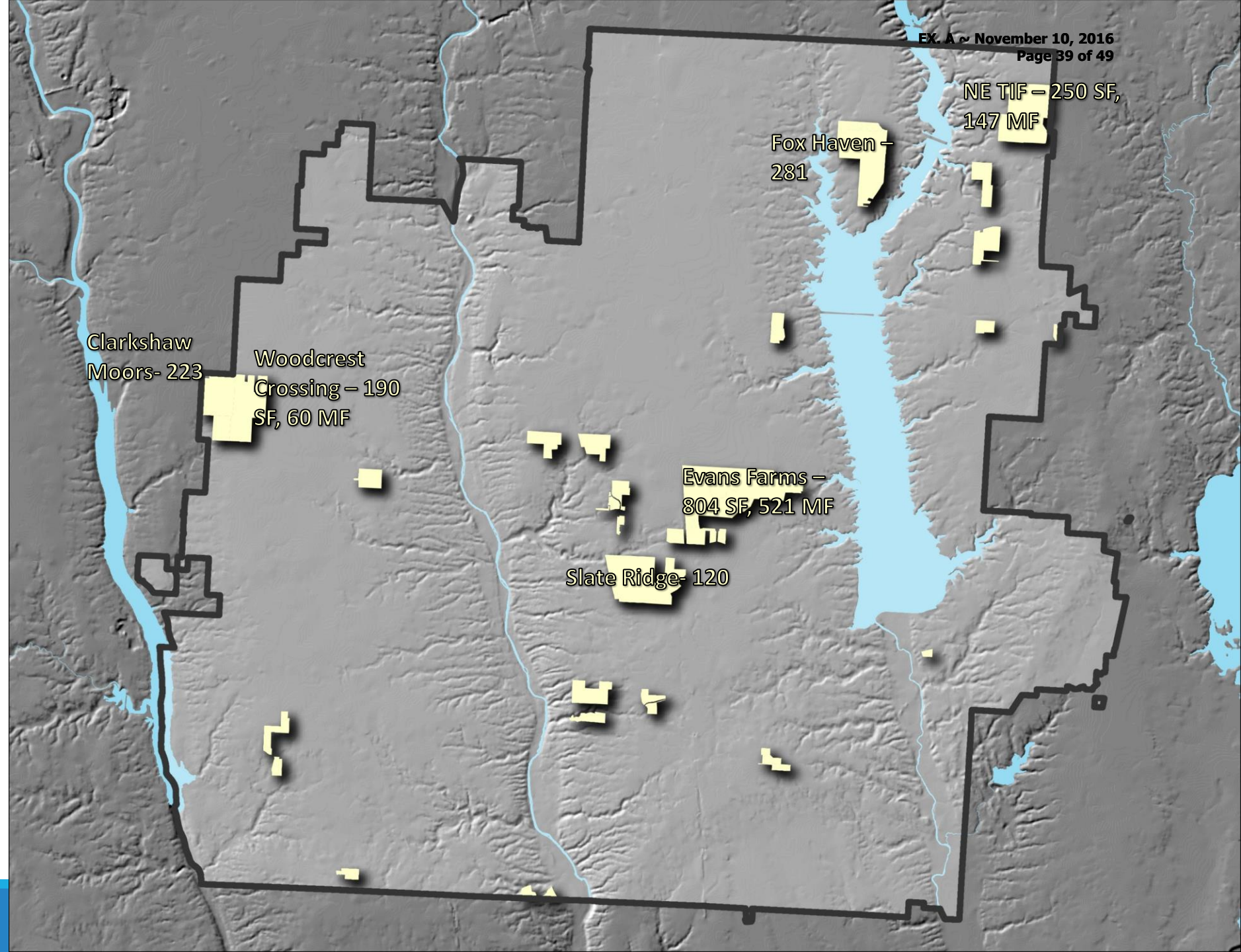
Sketch Review

- 110 Single Family Units
- 54 Multi-Family Units
- 118 acres



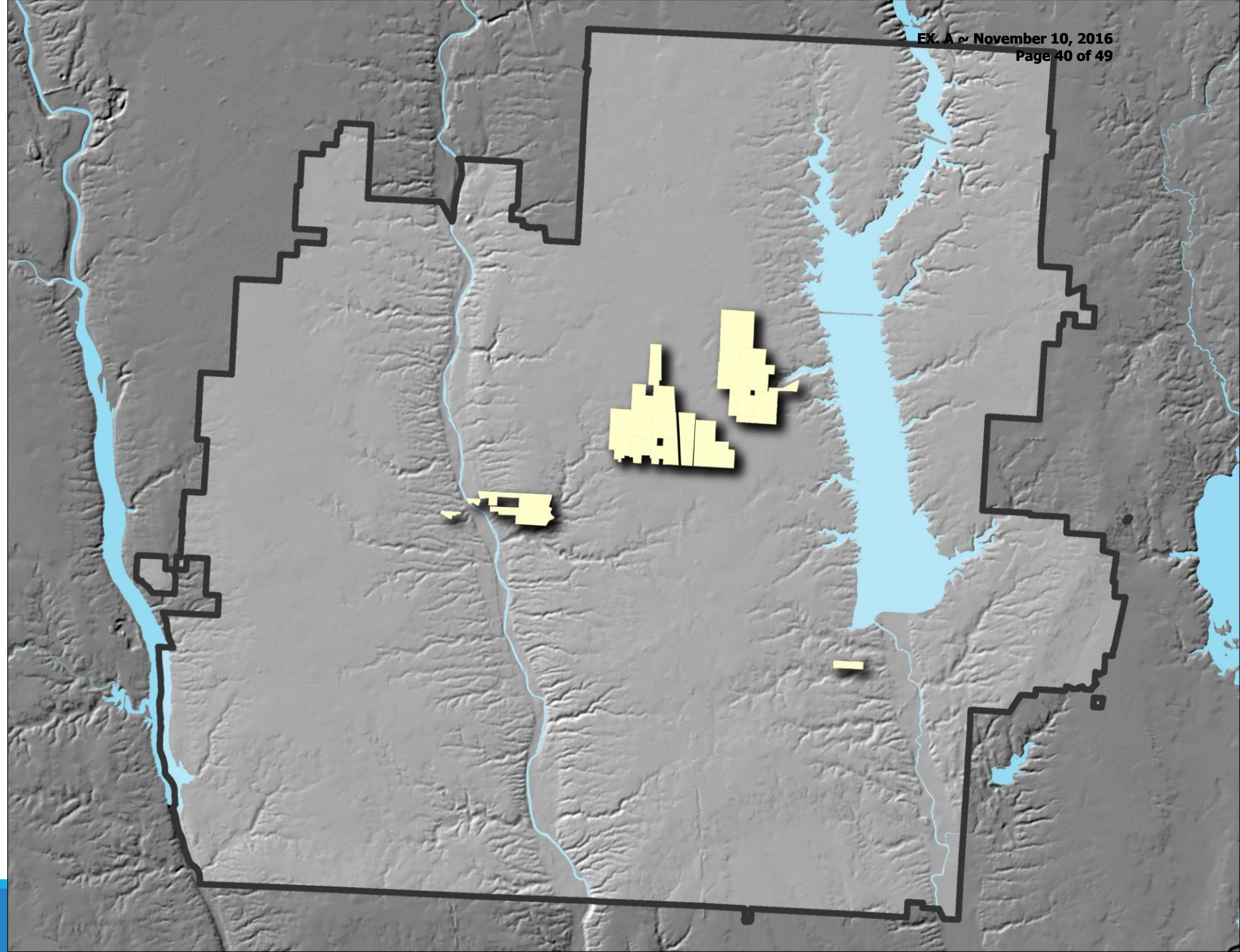
Zoning Change Approved

- 2,437 Single Family Units
- 1,889 Multi-Family Units
- 2,196 acres



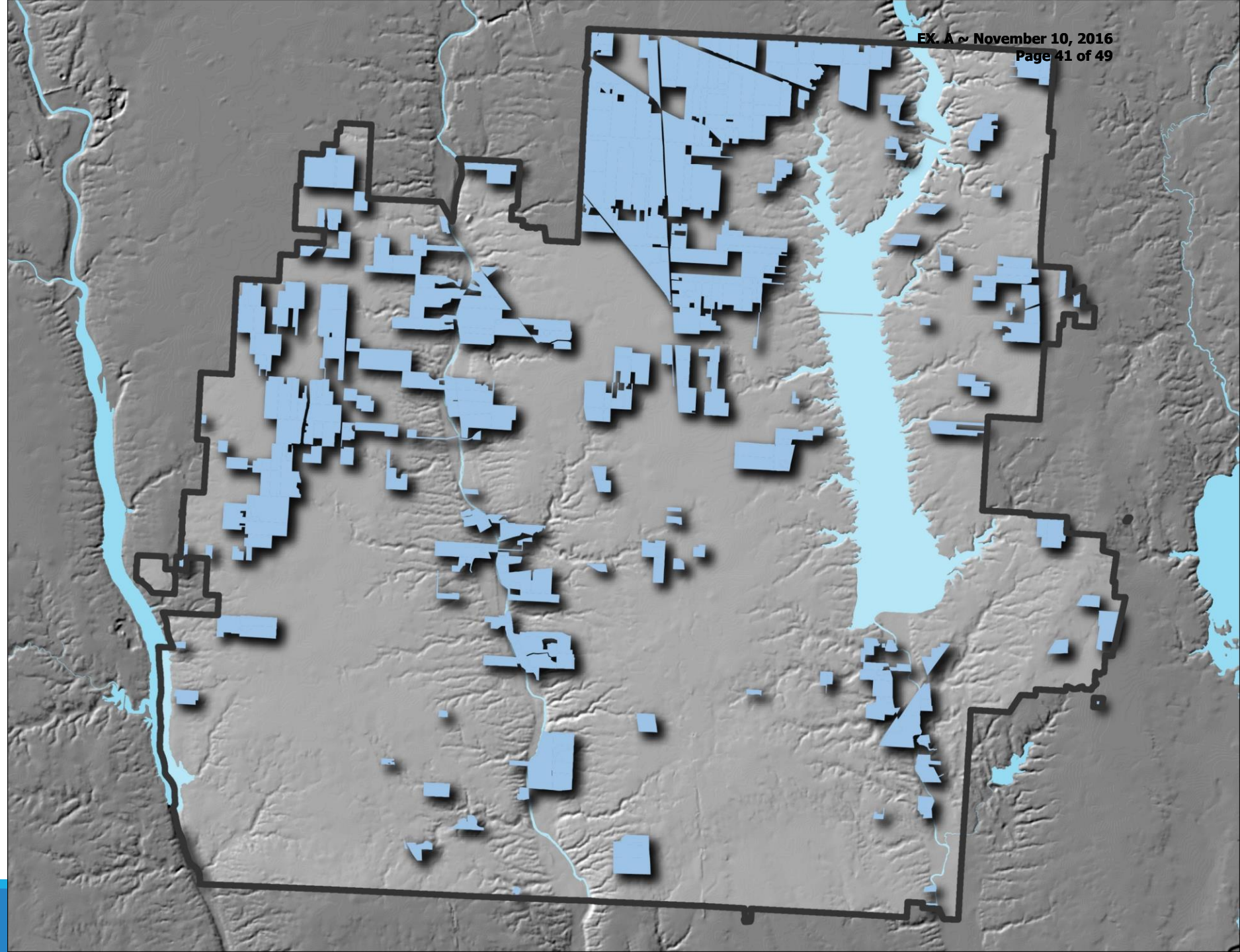
Developer Owned Still FR-1

- 1,642 Single Family Units
- 1,275 acres

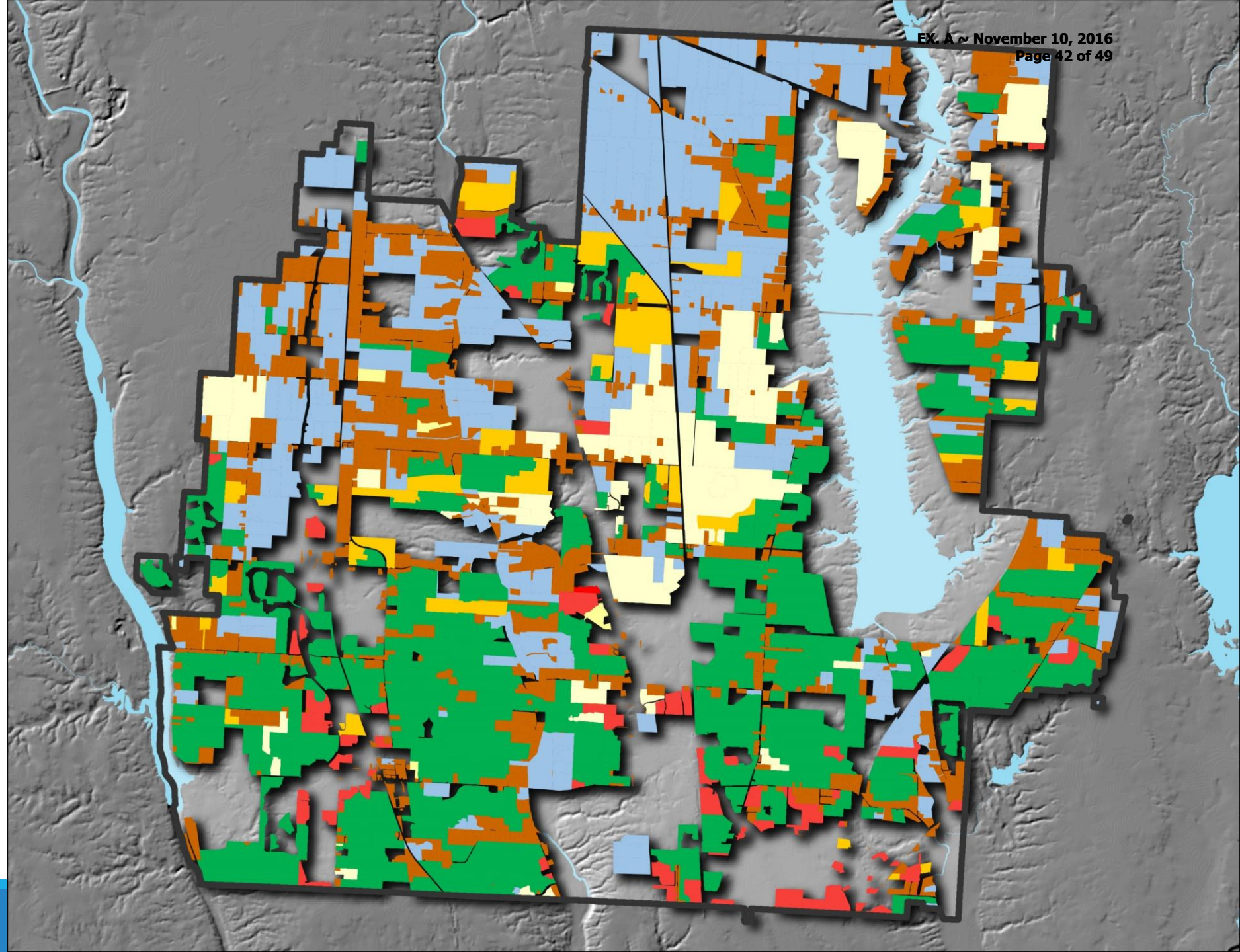


Developable FR-1 / Ag

- 15,230 Single Family Units
- 11,488 acres (18 square miles)



Land use



Additional Housing Development (Potential Units by School)

Landuse Type	ACES		AES		CES		FTES		GOES		HES		ISES		JCES		LTES		OCES		OMES		SRES		TRES		WCES		WRES	
	SF	MF	SF	MF	SF	MF	SF	MF	SF	MF	SF	MF	SF	MF	SF	MF	SF	MF	SF	MF	SF	MF	SF	MF	SF	MF	SF	MF	SF	MF
Preliminary Subdivision Approval	0	0	216	0	1,211	0	0	0	0	0	379	0	179	0	291	0	182	0	0	0	0	216	0	308	0	0	45	208	0	0
Sketch Review	0	0	0	0	40	0	0	0	0	0	67	0	3	0	0	0	0	0	0	0	0	0	48	0	6	0	0	0	0	0
Zoning Change Approved	0	0	804	937	21	0	0	0	127	91	194	216	147	26	612	465	461	60	36	0	0	0	0	0	27	104	10	0	0	0
Developer Owned (Still FR-1)	0	0	1,000	0	228	0	40	0	0	0	374	0	0	0	0	0	0	0	0	0	0	0	0	0	0	0	0	0	0	0
FR-1 (> 5.0 Acres)	0	0	1,461	0	4,716	0	559	0	36	0	3,207	0	1,040	0	1,316	0	302	0	1	0	250	0	26	0	63	0	329	0	8	0
Agriculture	0	0	0	0	0	0	0	0	0	0	55	0	0	0	219	0	0	0	0	0	0	0	0	0	0	0	0	0	0	0
Grand Total	0	0	3,481	937	6,216	0	599	0	163	91	4,276	216	1,369	26	2,438	465	945	60	37	0	250	216	26	356	90	110	384	208	8	0

Landuse Type	Berkshire		Hyatts		Liberty		Orange		Shanahan	
	SF	MF	SF	MF	SF	MF	SF	MF	SF	MF
Preliminary Subdivision Approval	429	424	361	0	0	308	0	0	1,713	0
Sketch Review	0	0	3	0	0	54	0	0	107	0
Zoning Change Approved	643	465	608	86	27	104	119	91	1,042	1,153
Developer Owned (Still FR-1)	268	0	0	0	0	0	0	0	1,374	0
FR-1 (> 5.0 Acres)	6,259	0	1,367	0	72	0	657	0	4,959	0
Agriculture	219	0	0	0	0	0	0	0	55	0
Grand Total	7,818	889	2,339	86	99	466	776	91	9,250	1,153

Landuse Type	Liberty		Olentangy		Orange	
	SF	MF	SF	MF	SF	MF
Preliminary Subdivision Approval	361	308	2,097	0	45	424
Sketch Review	3	54	107	0	0	0
Zoning Change Approved	635	190	1,675	1,618	129	91
Developer Owned (Still FR-1)	0	0	1,602	0	40	0
FR-1 (> 5.0 Acres)	1,439	0	10,330	0	1,545	0
Agriculture	0	0	274	0	0	0
Grand Total	2,438	552	16,085	1,618	1,759	515

Impact on Elementary Facilities (DESIGN)

Design Capacity = 10,175 seats

✓ 500 Unit Model

- ✓ Reach 100% in 2028
- ✓ Peaks at 13,061 in 2058 (20.09 Elementary Schools @ 650)
- ✓ Matures at 11,330 in 2086 (17.43 Elementary Schools @ 650)

✓ 750 Unit Model

- ✓ Reaches 100% in 2023
- ✓ Peaks at 13,944 in 2045 (21.45 Elementary Schools @ 650)
- ✓ Matures at 11,330 in 2073 (17.43 Elementary Schools @ 650)

Impact on Elementary Facilities (FUNCTIONAL)

Design Capacity = 9,600 seats

✓ 500 Unit Model

- ✓ Reach 100% in 2022
- ✓ Peaks at 13,061 in 2058 (20.09 Elementary Schools @ 650)
- ✓ Matures at 11,330 in 2086 (17.43 Elementary Schools @ 650)

✓ 750 Unit Model

- ✓ Reaches 100% in 2018
- ✓ Peaks at 13,944 in 2045 (21.45 Elementary Schools @ 650)
- ✓ Matures at 11,330 in 2073 (17.43 Elementary Sch0ols @ 650)

Impact on Middle School Facilities (DESIGN)

Design Capacity = 5,500 seats

✓ 500 Unit Model

- ✓ Reach 100% in 2040
- ✓ Peaks at 6,530 in 2058 (6.5 Middle Schools @ 1,000)
- ✓ Matures at 5,665 in 2086 (5.6 Middle Schools @ 1,000)

✓ 750 Unit Model

- ✓ Reaches 100% in 2027
- ✓ Peaks at 6,972 in 2045 (6.9 Middle Schools @ 1,000)
- ✓ Matures at 5,665 in 2073 (5.6 Middle Schools @ 1,000)

Impact on Middle School Facilities (FUNCTIONAL)

Design Capacity = 5,000 seats

✓ 500 Unit Model

- ✓ Reach 100% in 2026
- ✓ Peaks at 6,530 in 2058 (6.5 Middle Schools @ 1,000)
- ✓ Matures at 5,665 in 2086 (5.6 Middle Schools @ 1,000)

✓ 750 Unit Model

- ✓ Reaches 100% in 2022
- ✓ Peaks at 6,972 in 2045 (6.9 Middle Schools @ 1,000)
- ✓ Matures at 5,665 in 2073 (5.6 Middle Schools @ 1,000)

Impact on High School Facilities

- ✓ Assuming 7,200 high school seats
 - ✓ 500 Unit Model
 - ✓ Reach 100% (7,200) in 2041
 - ✓ Peaks 8,374 in 2056 (4.65 High Schools @ 1,800)
 - ✓ Matures 7,209 in 2085 (4.005 High Schools @ 1,800)
 - ✓ 750 Unit Model
 - ✓ Reach 100% (7,200) in 2028
 - ✓ Peaks 8,972 in 2044 (4.98 High Schools @ 1,800)
 - ✓ Matures 7,209 in 2072 (4.005 High Schools @ 1,800)

Conclusion

✓ Cheshire ES

- ✓ Current enrollment = 700 (104%)
- ✓ 1,211 units ready to go. * .9 (student / unit) * (6/13) = 503 more students. For a total of 1,203 that will likely occur before 2022
- ✓ Similar Scenarios following at Heritage, Arrowhead, Shanahan, and Berkshire.
- ✓ The issue is going to be the level of pain tolerance. Do we balance enrollment through redistrict or do we ease the pain with more facilities.

Appropriations Adjustments

Fund	11/10/2016 Adjustments	Explanation:
007 - Special Trust	\$ 1,905.00	Employee Benefits/Staff Donations
018 - Public School Support	\$ 32,372.00	Fundraisers/Donations
200 - Student Activity	<u>\$ 2,400.00</u>	New Activities/Fundraisers
	\$ 36,677.00	

REGULAR MEETING

October 1116

The Regular Meeting of the Olentangy Local Board of Education was called to order at the Olentangy Administrative Office by D. King, president at 6:00 p.m.

Roll Call: D. King, present; R. Bartz, present; J. Feasel, present; K. O’Brien, present; M. Patrick, present

Pledge of Allegiance

Approve R. Bartz moved, J. Feasel seconded to approve the agenda for the October 11, Agenda 2016 regular meeting. 16-199
Vote: R. Bartz, yes; J. Feasel, yes; K. O’Brien, yes; M. Patrick, yes; D. King, yes.
Motion carried.

- Presentation
- A. Attendance Boundaries Committee Update – *Randy Wright, Krista Davis*
 - B. Capital Improvement Projects Update 2016 – *Jeff Gordon*
 - C. Ohio History Teacher of the Year Award – *Justin Emrich* – Berkshire Middle School – Presented by: *Christian Pascarella*, Ashland University
 - D. Energy Savings Program Update - *Jeff Gordon*

Board President’s Report

Superintendent’s Report

Treasurer’s Report

Public Participation Session #1 – For General Comments – Kelly Livingston – Disparate treatment of minority students in the district

- Discussion Items
- A. First reading of Five-Year Financial Forecast – *Emily Hatfield*

Public Participation Session #2 – Regarding Action Items – None

Exec. J. Feasel moved, M. Patrick seconded to enter into executive session at 7:15 p.m. Session as permitted by Section 121.22(G)(4) of the Ohio Revised Code, for the purpose 16-200 of preparing for, conducting, or reviewing negotiations or bargaining sessions with public employees, and as permitted by Section 121.22 (G)(1) of the Ohio Revised Code, to consider the employment and compensation of public employees.
Vote: J. Feasel, yes; M. Patrick, yes; R. Bartz, yes; K. O’Brien, yes; D. King, yes.
Motion carried.

The board re-entered open session at 7:30 p.m.

Board J. Feasel moved, M. Patrick seconded to approve the following Board Action Items Action Item A. Approve collective bargaining agreement with Olentangy Teachers Association 16-201
Vote: J. Feasel, yes; M. Patrick, yes; R. Bartz, yes; K. O’Brien, yes; D. King, yes.
Motion carried.

REGULAR MEETING

October 11

16

Treas. Action Items 16-202 J. Feasel moved, M. Patrick seconded to approve the following Treasurer’s Action Items:

A. Approve donations to the district

- 1) Full Size Roth Violin with case and bow valued at \$200
From: Art Buanno
To: Shanahan Middle School Strings Department
- 2) \$1,500 Grant for top placement in Brain Game, for Library & Media Resources
From: Westfield Insurance
To: Olentangy High School
- 3) New Ash Trees to replace dead Ash Trees that were removed - \$6,175
From: Arrowhead PTO
To: Arrowhead Elementary School
- 4) Updated Sound System - \$15,000
From: Tyler Run PTO
To: Tyler Run Elementary School
- 5) LMS Conference Room Window Art - \$3,050
From: 8th Grade Parents
To: Liberty Middle School
- 6) Liberty Warriors Spirit Signs/Welcome Sign (3 signs, total value \$5,040.00)
From: LMS PTO/Student Council/Drama Club
To: Liberty Middle School
- 7) New baseball field-SW Corner of OOMS - \$7,500
From: Ambush Baseball
To: Orange Middle School
- 8) PE Supplies purchased from Giant Eagle “points” - \$998.93
From: Giant Eagle
To: Indian Springs Elementary School
- 9) Delay of Game Clocks - \$12,000
From: Olentangy Orange Athletic Boosters
To: Olentangy Orange High School
- 10) \$4,552.19 for LHS Boys’ Asst. Basketball Coach Supplemental
From: Olentangy Liberty Athletic Boosters
To: Olentangy Local Schools

Vote: J. Feasel, yes; M. Patrick, yes; R. Bartz, yes; K. O’Brien, yes; D. King, yes.
Motion carried.

Supt. Action Item 16-203 R. Bartz moved, M. Patrick seconded to approve Superintendent Action Item A-5.

A. Specific Human Resource Items – Certified Staff

5. Approve pupil activity supervisor employment for the 2016-17 school year specifically conditioned on and subject to successful background checks, receipt and final administrative review of all application records, and receipt of all other necessary documentation:
Feasel, John C., Olentangy High School, Winter Season, Boys Head Basketball Coach, Group 1, Step 12 at \$7,098

Vote: R. Bartz, yes; M. Patrick, yes; J. Feasel, abstain; K. O’Brien, yes; D. King, yes.
Motion carried.

Supt. Action Items 16-196 J. Feasel moved, M. Patrick seconded to approve Superintendent Action Items A 1-4 and 6-7, and B-F

A. Specific Human Resource Items – Certified Staff

1. Approve administrative per diem for the assumption of additional duties for the 2016-17 school year:
Knape, Leann M., Olentangy Local Schools, Assistant Principal

REGULAR MEETING

October 11

16

2. Approve certified position(s) paid through memorandum billing

Employee Name	Position/Location	Total	Salary	
		Hours	Per Hour	Total
Fundations				
Dando Tressi L.	Instructor, CES	15.00	\$ 25.00	\$ 375.00
Beals Carrie S.	Instructor, GOES	15.00	\$ 25.00	\$ 375.00
Nagy Keely L.	Instructor, HES	15.00	\$ 25.00	\$ 375.00
Jehnzen Jennifer A.	Instructor, OMES	15.00	\$ 25.00	\$ 375.00
Home Instruction				
Binkley Chris A.	Instructor, OHS	90.00	\$ 25.00	\$ 2,250.00
Match Jamie A.	Instructor, OHS	10.00	\$ 25.00	\$ 250.00
Bird Courtney R.	Instructor, OLHS	10.00	\$ 25.00	\$ 250.00
Zahran Alessandra H.	Instructor, OLHS	10.00	\$ 25.00	\$ 250.00
McDermott Terence E.	Instructor, OOHs	20.00	\$ 25.00	\$ 500.00

3. Approve supplemental employment for the 2016-17 school year specifically conditioned on and subject to successful background checks, receipt and final administrative review of all application records, and receipt of all other necessary documentation

Supplemental Area	Coach / Advisor	Group	Step	Amount	Season
Building Department Chairs					
Instructional Technology HES	Carlson, Alicia N.	7	1	\$ 2,169.00	All Year
Orchestra / Strings					
Elementary Orchestra / Strings ¹					
FTES	Bash, Jason J.	5	4	\$ 3,549.00	All Year
Elementary Orchestra / Strings1 OCES	Brown, Andrew E.	1/2 of 5	3	\$ 1,676.00	All Year
Washington, DC - 8th Grade Trip					
Washington, DC - Volunteer OBMS	Diehl, Brett D.	N/A	N/A	\$ -	Fall
Washington, DC - Volunteer OBMS	Dittman, Rebecca S.	N/A	N/A	\$ -	Fall
Washington, DC - Volunteer OBMS	Macko, Jill E.	N/A	N/A	\$ -	Fall
Washington, DC - Volunteer OBMS	Rinehart, Christine N.	N/A	N/A	\$ -	Fall
Basketball					
Boys JV Basketball Coach OHS	Garrison, Kip C.	3	7	\$ 5,324.00	Winter
Boys Head Basketball Coach OLHS	Nossaman, Greg C.	1	10	\$ 7,098.00	Winter
Boys Asst Basketball Coach OLHS	Almanson, Joshua D.	3	1	\$ 4,141.00	Winter
Girls Asst Basketball Coach OLHS	Streib, Kevin T.	3	4	\$ 4,732.00	Winter
Girls JV Basketball Coach OLHS	Waterwash, Thomas A.	3	0	\$ 3,943.00	Winter
Girls 8th Grade Basketball Coach OHMS	Waterwash, Ron G.	6	10	\$ 4,338.00	Winter
Music					
Music Director FTES	Bash, Jason J.	10	6	\$ 1,025.00	Winter
Asst Music Director FTES	Bash, Jason J.	11	6	\$ 631.00	Winter
Sports Statistician					
Sports Statistician OHS	Wells, Eric B.	11	3	\$ 513.00	Winter
Wrestling					
Head Wrestling Coach OLHS	Marinelli, Mark A.	2	10	\$ 6,704.00	Winter
Freshman Wrestling Coach OLHS	Counts, Daniel G	4	5	\$ 4,141.00	Winter
Asst Wrestling Coach OHMS	Mickens, Shawn J.	7	4	\$ 2,760.00	Winter
Music					
Music Director FTES	Garcia, Renee N.	10	7	\$ 1,065.00	Spring
Asst Music Director FTES	Bash, Jason J.	11	6	\$ 631.00	Spring
Spelling Bee Advisor					
Spelling Bee Advisor OOMS	Bragg, J. Renea	1/2 of 11	4	\$ 276.00	Spring
Spelling Bee Advisor OOMS	Hire, Jenna M.	1/2 of 11	4	\$ 276.00	Spring
Spelling Bee Advisor GOES	Howard, Robin L.	11	1	\$ 434.00	Spring
Spelling Bee Advisor JCES	Baker, Emily F.	11	0	\$ 394.00	Spring

¹Elementary Orchestra / Strings - Approved by the Board of Education to move from Group 7 to Group 5 on May 23, 2013

4. Approve pupil activity supervisor employment for the 2016-17 school year specifically conditioned on and subject to successful background checks, receipt and final administrative review of all application records, and receipt of all other necessary documentation

Supplemental Area	Coach / Advisor	Group	Step	Amount	Season
Band					
Asst Band Director OBMS	Dillion, Nicholas R.	7	0	\$ 1,972.00	All Year
Asst Band Director OHMS	Nelsen, Benjamin J.	7	2	\$ 2,366.00	All Year
Asst Band Director OLMS	Nelsen, Benjamin J.	7	2	\$ 2,366.00	All Year
Asst Band Director OOMS	Nelsen, Benjamin J.	7	2	\$ 2,366.00	All Year
Asst Band Director OSMS	Jones, Kelsey M.	7	0	\$ 1,972.00	All Year
Choir					
Choir Volunteer - Chaperone OLHS	Bond, Susan E.	N/A	N/A	\$ -	All Year
Choir Volunteer - Chaperone OLHS	Randall, Melvin L.	N/A	N/A	\$ -	All Year
Washington, DC Coordinator					
Washington, DC Coordinator OSMS	Hersey, Jennifer	1/4 of 7	0	\$ 493.00	All Year
Basketball					
Boys Freshman Basketball Coach OHS	Ballmer Jr., John C.	3	4	\$ 4,732.00	Winter
Boys Asst Basketball Coach OLHS	Yazrombek, Robert J.	3	0	\$ 3,943.00	Winter
Boys JV Basketball Coach OLHS	Yazrombek, Andrew J.	3	2	\$ 4,338.00	Winter
Girls Head Basketball Coach OLHS	Krafty, Samuel L.	1	5	\$ 6,112.00	Winter
Boys 7th Grade Basketball Coach OHMS	McCort, Mark D.	6	4	\$ 3,155.00	Winter
Girls 7th Grade Basketball Coach OHMS	Harris, Val J.	6	10	\$ 4,338.00	Winter
Basketball - Volunteer OHMS	Mahan, James A.	N/A	N/A	\$ -	Winter

REGULAR MEETING

October 11 16

Supplemental Area (Cont.)	Coach / Advisor	Group	Step	Amount	Season
Basketball - Volunteer OLHS	Fabiano, Keith S.	N/A	N/A	\$ -	Winter
Basketball - Volunteer OLMS	Wilke, Steven M.	N/A	N/A	\$ -	Winter
Bowling					
Boys Head Bowling Coach OLHS	Nole, M. Steven	9	1	\$ 1,282.00	Winter
Girls Head Bowling Coach OLHS	Ridolfo, Linda L.	9	8	\$ 1,972.00	Winter
Bowling - Volunteer OLHS	Duncan, Fred D.	N/A	N/A	\$ -	Winter
Boys Head Bowling Coach OOHS	Palmer, Rodney W.	9	1	\$ 1,282.00	Winter
Girls Head Bowling Coach OOHS	Brown, Paul T.	9	2	\$ 1,380.00	Winter
Bowling - Volunteer OOHS	Boysaw, Dominic L.	N/A	N/A	\$ -	Winter
Bowling - Volunteer OOHS	Cotterman, Marian L.	N/A	N/A	\$ -	Winter
Ice Hockey					
Head Ice Hockey Coach OHS	Ross, Michael A.	2	1	\$ 4,929.00	Winter
Swimming					
District Diving Coach ¹ OHS/OLHS/OOHS	White, Jennifer M.	3/4 of 6	10	\$ 3,253.50	Winter
Girls Head Swimming Coach OHS	Ljubi, Nicholas E.	2	1	\$ 4,929.00	Winter
Boys Head Swimming Coach OOHS	Fourquarean II, Joseph R.	3/4 of 2	6	\$ 4,436.25	Winter
Girls Head Swimming Coach OOHS	Fourquarean II, Joseph R.	3 /4 of 2	6	\$ 4,436.25	Winter
Wrestling					
Head Wrestling Coach OHS	Lyberger, Dennis R.	2	10	\$ 6,704.00	Winter
Asst Wrestling Coach OLHS	Zucker, Michael R.	3	10	\$ 5,915.00	Winter
Asst Wrestling Coach OOMS	DiSabato, Ryan C.	7	1	\$ 2,169.00	Winter
Lacrosse					
Girls Head Lacrosse Coach OHS	Halls, Amy M.	2	3	\$ 5,324.00	Spring
Girls Asst Lacrosse Coach OHS	Milliron, Natalie E.	4	2	\$ 3,549.00	Spring
Softball					
8th Grade Softball Coach OOMS	Jones, Michael L.	6	0	\$ 2,366.00	Spring

¹HS Diving Coach - Approved by the Board of Education on September 25, 2012

6. Accept, with regret, for the purpose of retirementthe following certified resignation:
Waite, Kathleen M., Shanahan Middle School, Music, effective at the end of the 2016-17 school year
7. Accept the following supplemental resignations:
Carlson, Alicia N., Heritage Elementary School, All Year, Co-Instructional Technology Department Chair
Schwamburger, Heather W., Heritage Elementary School, All Year, Co-Instructional Technology Department Chair

B. Specific Human Resource Items – Classified Staff

1. Approve classified employment for the 2016-17 school year, specifically conditioned on and subject to successful background checks, receipt and final administrative review of all application records, and receipt of all other necessary documentation:
Braaten, Alisa A., Shanahan Middle School, Clinic Aide
English, Jennifer L., Olentangy High School, Food Service Worker
Froehlich, Kathleen C., Freedom Trail Elementary School, Food Service Worker
Grahwol, Dawn M., Hyatts Middle School, Food Service Worker
Higgins, Kristen N., Johnnycake Corners Elementary School, Food Service Worker
Lloyd, David J., Berkshire Middle School, Intervention Aide
Penka, Deborah A., Freedom Trail Elementary School, Food Service Worker
Phillips, Andrew S., Berkshire Middle School, Intervention Aide
Werling, Amy S., Orange High School, Food Service Worker
2. Approve classified substitute workers for the 2016-17 school year, specifically conditioned on and subject to successful background checks, receipt and final administrative review of all application records, and receipt of all other necessary documentation:
Flanagan, Jennifer N. Gray, Mindy Lapid, Victoria G. Meihls, Ellen F.
3. Approve subcontractor/volunteer worker(s) for the 2016-17 school year, specifically conditioned on and subject to successful background checks, receipt and final administrative review of all application records, and receipt of all other necessary documentation:
Johnson, Re’sean J., Walnut Creek Elementary School, Volunteer

REGULAR MEETING

October 11 16

4. Accept, with regret, the following classified resignations:
Hoppenjans, Jeanne M., Olentangy High School, Office Aide, eff. December 1, 2016
Hudson, Michelle, Berkshire Middle School, Intervention Aide, eff. October 4, 2016
McDowell, Jacqueline I., Transportation, Driver, effective October 13, 2016
Pounds, Nichole G., Wyandot Run Elem. School, Custodian, eff. October 12, 2016
Sturkie Johns, Cassandra J., Walnut Creek Elementary School, Food Service Worker, effective September 27, 2016

C. Approve senior(s) for graduation, pending certification of completion of all district, state and local requirements

Olentangy High School: Lee, Brenda Kyle
Orange High School: Davis, Julianna Renee

D. Approve tuition-free attendance for Peyton St. John, who has reached his senior year at Olentangy High School and no longer reside in the district

E. Approve the following resolution of participation in the META Solutions cooperative school bus purchasing program:

BE IT RESOLVED, the Olentangy Local Schools Board of Education wishes to participate and authorizes META Solutions to advertise and receive bids on said Board's behalf for the cooperative purchases of school buses.

Vote: J. Feasel, yes; M. Patrick, yes; R. Bartz, yes; K. O'Brien, yes; D. King, yes.
Motion carried.

Exec. Session 16-205 M. Patrick moved, J. Feasel seconded to enter into executive session at 7:32 p.m. as permitted by Section 121.22 (G)(3) of the Ohio Revised Code, for the purpose of conferences with attorneys concerning pending or imminent court action, and as permitted by Section 121.22 (G)(5) of the Ohio Revised Code, matters required to be kept confidential pursuant to state or federal law, and as permitted by Section 121.22 (G)(1) of the Ohio Revised Code, to consider the employment and compensation of public employees.

Vote: M. Patrick, yes; J. Feasel, yes; R. Bartz, yes; K. O'Brien, yes; D. King, yes.
Motion carried.

The board re-entered open session at 8:58 p.m.

Adjourn 16-206 K. O'Brien moved, M. Patrick seconded that the regular meeting of the Olentangy Local School District Board of Education be adjourned at 9:00 p.m.

Vote: K. O'Brien, yes; M. Patrick, yes; J. Feasel, yes; R. Bartz, yes; D. King, yes.
Motion carried.

David King, President

Emily Hatfield, Interim Treasurer

SPECIAL MEETING

October 18 16

The Special Meeting of the Olentangy Local Board of Education was called to order at the Olentangy Administrative Office by D. King, president at 6:00 p.m.

Appoint Roger Bartz was appointed Treasurer Pro-Tem for this meeting.
Treasurer
Pro-Tem

Roll Call: D. King, present; R. Bartz, present; J. Feasel, present; K. O’Brien, present; M. Patrick, present

Pledge of Allegiance

Approve J. Feasel moved, M. Patrick seconded to approve the agenda for the October 18,
Agenda 2016 special meeting.
16-207

Vote: J. Feasel, yes; M. Patrick, yes; R. Bartz, yes; K. O’Brien, yes; D. King, yes.
Motion carried.

Exec. J. Feasel moved, M. Patrick seconded to enter into executive session at 6:05 p.m.
Session pursuant to Ohio Revised Code Section 121.22 (G)(1) and (G)(5) to consider the
16-208 employment of public employees and/or matters required to be kept confidential by
law.

Vote: J. Feasel, yes; M. Patrick, yes; R. Bartz, yes; K. O’Brien, yes; D. King, yes.
Motion carried.

The board re-entered open session at 10:00 p.m.

Adjourn M. Patrick moved, J. Feasel seconded that the special meeting of the Olentangy
16-209 Local School District Board of Education be adjourned at 10:03 p.m.

Vote: M. Patrick, yes; J. Feasel, yes; R. Bartz, yes; K. O’Brien, yes; D. King, yes.
Motion carried.

<hr/> David King, President	<hr/> Roger Bartz, Treasurer Pro Tem
-----------------------------	--------------------------------------

**CERTIFIED POSITION(S) PAID THROUGH MEMORANDUM BILLING
2016-17 School Year**

Recommended for Board of Education Approval on November 10, 2016

Employee Name			Position	Hours	Salary	
Last Name	First Name	MI			Per Hour	Total
Home Instruction						
Lewis	Victoria	K.	Instructor, OLHS	30.00	\$ 25.00	\$ 750.00
Tilden	Jaclyn	A.	Instructor, OCES	40.00	\$ 25.00	\$ 1,000.00
PSAT Test Proctors (October 15, 2016)						
Hughes	Melissa	A.	Instructor, OLHS	1.00	\$ 25.00	\$ 25.00
Rafey	Angela	M.	Instructor, OLHS	2.00	\$ 25.00	\$ 50.00
Vallier	Brittany	A.	Instructor, OLHS	1.00	\$ 25.00	\$ 25.00
Waterwash	Ronald	G.	Instructor, OLHS	0.50	\$ 25.00	\$ 12.50
Miller	Jaime	C.	Instructor, OOHS	1.00	\$ 25.00	\$ 25.00
Rock	Andrew	J.	Instructor, OOHS	2.00	\$ 25.00	\$ 50.00
Student Intervention Plan						
Howard	Robin	L.	Instructor, GOES	11.00	\$ 25.00	\$ 275.00
King	Michelle	E.	Instructor, GOES	22.50	\$ 25.00	\$ 562.50
Ortega	Joseph	V.	Instructor, GOES	22.00	\$ 25.00	\$ 550.00
Rice	Kelley	C.	Instructor, GOES	22.50	\$ 25.00	\$ 562.50
Romanoff	Loran	A.	Instructor, GOES	22.50	\$ 25.00	\$ 562.50
Stevens	Kristopher	C.	Instructor, GOES	11.00	\$ 25.00	\$ 275.00
Telesz	Angela	M.	Instructor, GOES	22.50	\$ 25.00	\$ 562.50
McLean	Christina	M.	Instructor, OMES	8.00	\$ 25.00	\$ 200.00
Sarnovsky	Jennifer	S.	Instructor, OMES	8.00	\$ 25.00	\$ 200.00
Vasila	Brittni	E.	Instructor, OMES	8.00	\$ 25.00	\$ 200.00
Wayman	Elizabeth	A.	Instructor, OMES	8.00	\$ 25.00	\$ 200.00
Title I Literacy Night (March 14, 2017)						
Dangel	Betty	A.	Instructor, AES	2.00	\$ 25.00	\$ 50.00
Dodson	Jennifer	N.	Instructor, AES	2.00	\$ 25.00	\$ 50.00
Frazer	Brandi	L.	Instructor, AES	2.00	\$ 25.00	\$ 50.00
Hogan	Lee Ann		Instructor, AES	2.00	\$ 25.00	\$ 50.00
Kendall	Jill	D.	Instructor, AES	2.00	\$ 25.00	\$ 50.00
Oldaker	Kelly	J.	Instructor, AES	2.00	\$ 25.00	\$ 50.00
Pomeroy	Christi	L.	Instructor, AES	2.00	\$ 25.00	\$ 50.00
Schupp	Lori	A.	Instructor, AES	2.00	\$ 25.00	\$ 50.00
Scialabba	Kristin	A.	Instructor, AES	2.00	\$ 25.00	\$ 50.00
Shondell	Bethany	A.	Instructor, AES	2.00	\$ 25.00	\$ 50.00
Spitzer	Alison	M.	Instructor, AES	2.00	\$ 25.00	\$ 50.00
Staskiewicz	Caitlin	R.	Instructor, AES	2.00	\$ 25.00	\$ 50.00
Wagner	Ashlee	M.	Instructor, AES	2.00	\$ 25.00	\$ 50.00

SUPPLEMENTAL CONTRACTS

2016-17 School Year

Recommended for Board of Education Approval on November 10, 2016

Supplemental Area	Location	Coach / Advisor	Contract			
			Group	Step	Amount	Season
Performing Arts						
Performing Arts Chaperone - Volunteer	OOHS	Birri, Samantha R.	N/A	N/A	\$ -	All Year
Performing Arts Chaperone - Volunteer	OOHS	Cabral Hever, Jennifer A.	N/A	N/A	\$ -	All Year
Performing Arts Chaperone - Volunteer	OOHS	Cox, Ishbah	N/A	N/A	\$ -	All Year
Performing Arts Chaperone - Volunteer	OOHS	Dunn, Craig A.	N/A	N/A	\$ -	All Year
Science Olympiad						
Science Olympiad Advisor ¹	OHS	Rush, Kevin D.	10	0	\$ 789.00	All Year
Science Olympiad Advisor ¹	OLHS	Kurtek, Katrina D.	10	0	\$ 789.00	All Year
Senior Ohio Model United Nations						
Senior Ohio Model United Nations Chaperone - Volunteer	OOHS	Cervi, Tammera S.	N/A	N/A	\$ -	All Year
Senior Ohio Model United Nations Chaperone - Volunteer	OOHS	Travis, Sarah M.	N/A	N/A	\$ -	All Year
Senior Ohio Model United Nations Chaperone - Volunteer	OOHS	Demana, Michael A.	N/A	N/A	\$ -	All Year
Basketball						
Boys Asst Basketball Coach	OHS	Holly, Kelly R.	3	5	\$ 4,929.00	Winter
Boys 8th Grade Basketball Coach	OLMS	Kelly, Christopher S.	6	10	\$ 4,338.00	Winter
Girls 8th Grade Basketball Coach	OOMS	Farmer, William E.	6	6	\$ 3,549.00	Winter
Boys 8th Grade Basketball Coach	OSMS	Wolfe, Kevin F.	6	6	\$ 3,549.00	Winter
Cheerleading						
7th Grade Cheerleading Coach	OSMS	Wood, Danielle M.	9	0	\$ 1,183.00	Winter
Faculty Manager						
Faculty Manager	OBMS	Pauff, Franklin P.	5	4	\$ 3,549.00	Winter
Faculty Manager	OLMS	Baker, Michael B.	5	5	\$ 3,746.00	Winter
Music						
Music Director	ACES	Anderson, Meghan M.	10	10	\$ 1,183.00	Winter
Asst Music Director	ACES	Anderson, Meghan M.	11	10	\$ 789.00	Winter
Music Director	JCES	Parker, Matthew E.	10	9	\$ 1,144.00	Winter
Wrestling						
Freshman Wrestling Coach	OHS	Picetti, Michael A.	4	6	\$ 4,338.00	Winter
Head Wrestling Coach	OOHS	Tressler, Scott C.	2	8	\$ 6,309.00	Winter
Wrestling - Volunteer	OOHS	Nicola, Brian R.	N/A	N/A	\$ -	Winter
Music						
Music Director	ACES	Anderson, Meghan M.	10	10	\$ 1,183.00	Spring
Asst Music Director	ACES	Anderson, Meghan M.	11	10	\$ 789.00	Spring
Music Director	JCES	Parker, Matthew E.	10	9	\$ 1,144.00	Spring

¹Science Olympiad - Approved by the Board of Education on September 29, 2016

PUPIL ACTIVITY SUPERVISOR CONTRACTS

2016-17 School Year

Recommended for Board of Education Approval on November 10, 2016

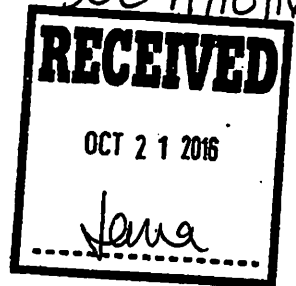
Supplemental Area	Location	Coach / Advisor	Contract			
			Group	Step	Amount	Season
Choir						
Choir Volunteer - Chaperone	OLHS	Latvanas, Amanda A.	N/A	N/A	\$ -	All Year
Choir Volunteer - Chaperone	OLHS	Smith, Michelle L.	N/A	N/A	\$ -	All Year
Choir Volunteer - Chaperone	OLHS	Smith, Thomas R.	N/A	N/A	\$ -	All Year
Performing Arts						
Performing Arts Volunteer - Chaperone	OHS	Bradley, Christine	N/A	N/A	\$ -	All Year
Performing Arts Volunteer - Chaperone	OHS	Cabrera, Denise D.	N/A	N/A	\$ -	All Year
Performing Arts Volunteer - Chaperone	OHS	Day, Dennis P.	N/A	N/A	\$ -	All Year
Performing Arts Volunteer - Chaperone	OHS	Day, Melanie S.	N/A	N/A	\$ -	All Year
Performing Arts Volunteer - Chaperone	OHS	Dunnick, John B.	N/A	N/A	\$ -	All Year
Performing Arts Volunteer - Chaperone	OHS	Dyll, Donna M.	N/A	N/A	\$ -	All Year
Performing Arts Volunteer - Chaperone	OHS	Freeman, Heidi L.	N/A	N/A	\$ -	All Year
Performing Arts Volunteer - Chaperone	OHS	Grubbs, David L.	N/A	N/A	\$ -	All Year
Performing Arts Volunteer - Chaperone	OHS	Hinkle, Randy L.	N/A	N/A	\$ -	All Year
Performing Arts Volunteer - Chaperone	OHS	Kusler, Duane A.	N/A	N/A	\$ -	All Year
Performing Arts Volunteer - Chaperone	OHS	Perry, Joyce A.	N/A	N/A	\$ -	All Year
Performing Arts Volunteer - Chaperone	OHS	Starr, Deborah J.	N/A	N/A	\$ -	All Year
Performing Arts Volunteer - Chaperone	OHS	Waldron, Elizabeth A.	N/A	N/A	\$ -	All Year
Performing Arts Volunteer - Chaperone	OHS	Waldron, Eugene	N/A	N/A	\$ -	All Year
Performing Arts Volunteer - Chaperone	OOHS	Barker, Wendy S.	N/A	N/A	\$ -	All Year
Performing Arts Volunteer - Chaperone	OOHS	Fleckenstein, Elisabeth A.	N/A	N/A	\$ -	All Year
Performing Arts Volunteer - Chaperone	OOHS	Holben, Mary E.	N/A	N/A	\$ -	All Year
Performing Arts Volunteer - Chaperone	OOHS	Johnson, Kevin T.	N/A	N/A	\$ -	All Year
Performing Arts Volunteer - Chaperone	OOHS	Lantz, Heather D.	N/A	N/A	\$ -	All Year
Performing Arts Volunteer - Chaperone	OOHS	Marsh-Eitel, Pamela A.	N/A	N/A	\$ -	All Year
Performing Arts Volunteer - Chaperone	OOHS	Mattox, Jennifer L.	N/A	N/A	\$ -	All Year
Performing Arts Volunteer - Chaperone	OOHS	Nelson, Bridget L.	N/A	N/A	\$ -	All Year
Performing Arts Volunteer - Chaperone	OOHS	Scott, Christi M.	N/A	N/A	\$ -	All Year
Performing Arts Volunteer - Chaperone	OOHS	Vande Water, Dean J.	N/A	N/A	\$ -	All Year
Basketball						
Girls Freshman Basketball Coach	OLHS	Rinkes, Michael J.	3	4	\$ 4,732.00	Winter
Boys 8th Grade Basketball Coach	OHMS	Meister, Christian R.	6	0	\$ 2,366.00	Winter
Cheerleading						
7th Grade Cheerleading Coach	OLMS	Soukup, Taryne J.	9	1	\$ 1,282.00	Winter
Drama						
Drama Choreographer	OLHS	Gress, Cassandra N.	8	2	\$ 1,775.00	Winter
Gymnastics						
Asst Gymnastics Coach ¹	OHS/OLHS/OOHS	Poehler, Kristy J.	8	6	\$ 2,169.00	Winter
Ice Hockey						
Ice Hockey - Volunteer	OHS	Robey, Michael F.	N/A	N/A	\$ -	Winter
Ice Hockey - Volunteer	OHS	Snopik, James E.	N/A	N/A	\$ -	Winter
Swimming						
District Diving - Volunteer	OHS/OLHS/OOHS	Besozzi, Jeffrey	N/A	N/A	\$ -	Winter
Boys Head Swimming Coach	OOHS	West, Delaney E.	1/4 of 2	0	\$ 1,183.00	Winter
Girls Head Swimming Coach	OOHS	West, Delaney E.	1/4 of 2	0	\$ 1,183.00	Winter
Wrestling						
Wrestling - Volunteer	OLHS	Lesko, Collin	N/A	N/A	\$ -	Winter
Wrestling - Volunteer	OLHS	Snyder, Christopher H.	N/A	N/A	\$ -	Winter
Head Wrestling Coach	OLMS	Cubberly, Matthew D.	6	0	\$ 2,366.00	Winter

Supplemental Area	Location	Coach / Advisor	Contract			
			Group	Step	Amount	Season
Drama						
Drama Choreographer	OLHS	Gress, Cassandra N.	8	2	\$ 1,775.00	Spring

¹Asst Gymnastics - Approved by the Board of Education on September 29, 2016

CLASSIFIED SUBSTITUTE LIST - 2016-17
Recommend for Board of Education Approval on November 10, 2016

Banks, Kimberly	Helminger, Karen E.
Blankenship, Deborah L.	Hrabcak, Mallory A.
Boyer, Laura A.	Kagarise, Jennifer N.
Carline, Jennifer L.	Lehman, Margaret M.
Divaratne, Samanthika R.	Lucas, Buneka R.
Evans, Marilyn N.	McGarvey, Irene V.
Forney, David B.	Pauley, Amoreena R.
Forshaw, Alida M.	Perl, Alexandra H.
Guastella, Charlotte	Rice, Jennifer R.
Haney, Stacey K.	Ryan, Alycia M.



OLENTANGY LOCAL SCHOOL DISTRICT

Student Activity Purpose Statement

School:

Olentangy High School

Activity Name:

Appreciating Uniqueness (AU)

Purpose: To unite

to talk about reasons why we do what we do

Basically celebrating diversity but explaining more about our
reasons why we feel the need to be different/unique

Major Types of Revenue: DonationsMajor Types of Expenditures: Snacks for meetings

T. McConner
 Building Principal

Jesse Dietrich
 Business Manager

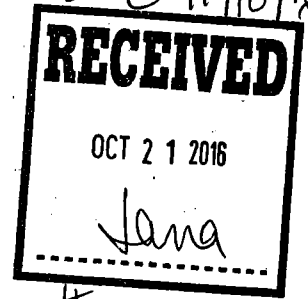
Lance Hrnovsky
 Co manager

Renee A. Heffer
 Sponsor

9/26/16 Randy Wight
 Date submitted

10/25/16

BOE 11/10/16



#111

OLENTANGY LOCAL SCHOOL DISTRICT

Student Activity Purpose Statement

School:

Olentangy High School

Activity Name:

Yoga Club

Purpose:

Our purpose for Yoga Club is to
provide a healthy outlet for students
to relieve stress. A monthly yoga day
would provide exercises that students can
learn and complete on their own time as
well.

Major Types of Revenue:

None

Major Types of Expenditures:

None

[Signature]
Building Principal

[Signature]
Business Manager

[Signature]
Sponsor

[Signature] 10/25/16
Date submitted

OLENTANGY LOCAL SCHOOL DISTRICT

Activity/Trip Purpose Statement #112

Ohio Mock Trial
Team offers an innovative approach to learning about law and how our legal system functions. Guided by teachers and legal advisors
School Olentangy Orange High School
Activity Name Mock Trial Team
Students compete in an original, simulated trial written by attorneys.

Purpose:

The Ohio Center for Law Related Education conducts a mock trial competition each winter. They put together a complete case in which students take on the roles of key witnesses and attorneys that argue both sides of the case before actual legal professionals in the state of Ohio. It's a great opportunity for students who are interested in pursuing a career in the legal field.

Major Types of Revenue:

n/a
Mock trial team spends money on the required materials + registration to compete.

Major Types of Expenditures:

OCLRE membership, digital copy of case materials (saves money compared to ordering individual hard copies), team registration fee

[Signature]
Building Principal

Brooke Brant
Sponsor

[Signature]
Business Manager

9/22/2016
Date submitted

Randy Wilt
10/25/16

OLENTANGY LOCAL SCHOOL DISTRICT

Student Activity Purpose Statement



School: Olentangy High School

Activity Name: Rooted

Purpose: to bring together a group of like-minded people who want to take part in environmentally friendly activities such as gardening and sharing creative ideas. It would also help make the school a greener and more welcoming place.

Major Types of Revenue: Club-jointing fee (\$10)

Major Types of Expenditures: Gardening and art supplies

T. M. Conner
Building Principal

B. M. [Signature]
Business Manager

Laura Wozniak 9/16/16
Sponsor

Randy [Signature] 10/25/16
Date submitted

OLENTANGY LOCAL SCHOOL DISTRICT
Student Activity Purpose Statement.



School: Olentangy Orange High School
Activity Name: Math Club

Purpose: Compete in Math competitions
Perpetuate interest in Mathematics

Major Types of Revenue: Fundraisers
Collect dues for Mu Alpha Theta

Major Types of Expenditures: Dues to Mu Alpha Theta
Contests

R. Kerry McFarland
Building Principal
Ladd
Business Manager

Stephanie Archer
Sponsor
Randyulgt 10/25/16
Date submitted

To be Presented to the Board of Education on November 10, 2016 to be declared impractical for transportation services in accordance with the November 29, 2005 resolution.

<u>Student</u>	<u>Grade</u>	<u>Parent/guardian</u>	<u>School Attending</u>
Amparbeng Akua	5	Kiliana Amparbeng	Grace Community Church
Amparbeng Ewyramma	3	Kiliana Amparbeng	Grace Community Church
Amparbeng Nanaamma	6	Kiliana Amparbeng	Grace Community Church
Fahimi Ethan	10	Michelle Fahimi	Worthington Christian
Fahimi Ari	11	Michelle Fahimi	Worthington Christian
Fisher William	K	Sara Fisher	Delaware Christian
Fisher Madison	3	Sara Fisher	Delaware Christian
Frich Alessia	K	Erik Frich	Delaware Christian
Grover Allison	9	Keith Grover	Delaware Christian
Kelly Kaitlin	2	Holly Kelly	Delaware Christian
Kirkley Matthew	2	Cynthia Kirkley	Worthington Christian
Kirkley Zachary	4	Cynthia Kirkley	Worthington Christian
Leneghan Grace	6	Patrick Leneghan	Polaris Christain Academy
Novosel Lauren	K	Amanda Novosel	Genoa Christian Academy
Owens Kendall	2	Kathy Kendall	Tree of Life
Thorton Alaina	K	John Brian Thorton	Linworth Childrens Center
Was Madalyn	K	Morgan Was	Linworth Childrens Center