



OLENTANGY | Local School District

OLENTANGY LOCAL SCHOOLS

ATTENDANCE BOUNDARIES COMMITTEE MEETING

NOVEMBER 1, 2016

Tonight's Agenda

(November 1, 2016)

- ✓ **Welcome** (10 min)
- ✓ **Overview** of tonight's meeting (5 min)
- ✓ Reminder of **BOE guidelines** and parameters (5 min)
- ✓ Review of **homework** (10 min)
- ✓ Assignment for tonight / **small group** work (60 min)
 - ✓ Part I (review homework)
 - ✓ Part II (discuss two conceptual models)
- ✓ Report out **outcomes** and conclusions from small group work to large group (25 min)
- ✓ **Closing** / homework for December 7 meeting
- ✓ **Go TRIBE!!!**

Redistricting Guidelines

Redistricting Guidelines Resolution

WHEREAS, A strong sense of community is essential to a successful school district and successful students;

WHEREAS, The Board of Education of the Olentangy Local School District recognizes that a district of 95 square miles faces a great challenge when working to promote a strong sense of community;

WHEREAS, The Board believes that all children deserve the same educational opportunities;

WHEREAS, The Board believes that the district is more than political, governmental, or geographical boundaries and directional lines on a map;

WHEREAS, The Board believes that a common district-wide Olentangy School experience would bond our expansive district and foster a strong sense of community;

Redistricting Guidelines (Continued)

THEREFORE, BE IT RESOLVED, The Board of Education of the Olentangy Local School District commits to ensuring that the sense of the Olentangy community will be strengthened and secured. To achieve this end, the Board will strive to assure that, as often as possible, students are assigned to buildings based on the following principles:

For All Building Levels:

Each building should be optimally utilized.

Once determined, after consideration of projected enrollment, attendance areas should remain intact, except to adjust for unexpectedly disparate student populations; distribute programs among schools to optimally utilize facilities; or for the opening of additional buildings.

Safety, convenience and efficiency of transportation, as well as student travel times and current population patterns, should be considered in assigning students buildings.

Alignment of elementary, middle and high school attendance areas should be a factor in establishing attendance areas as much as possible.

Redistricting Guidelines (Continued)

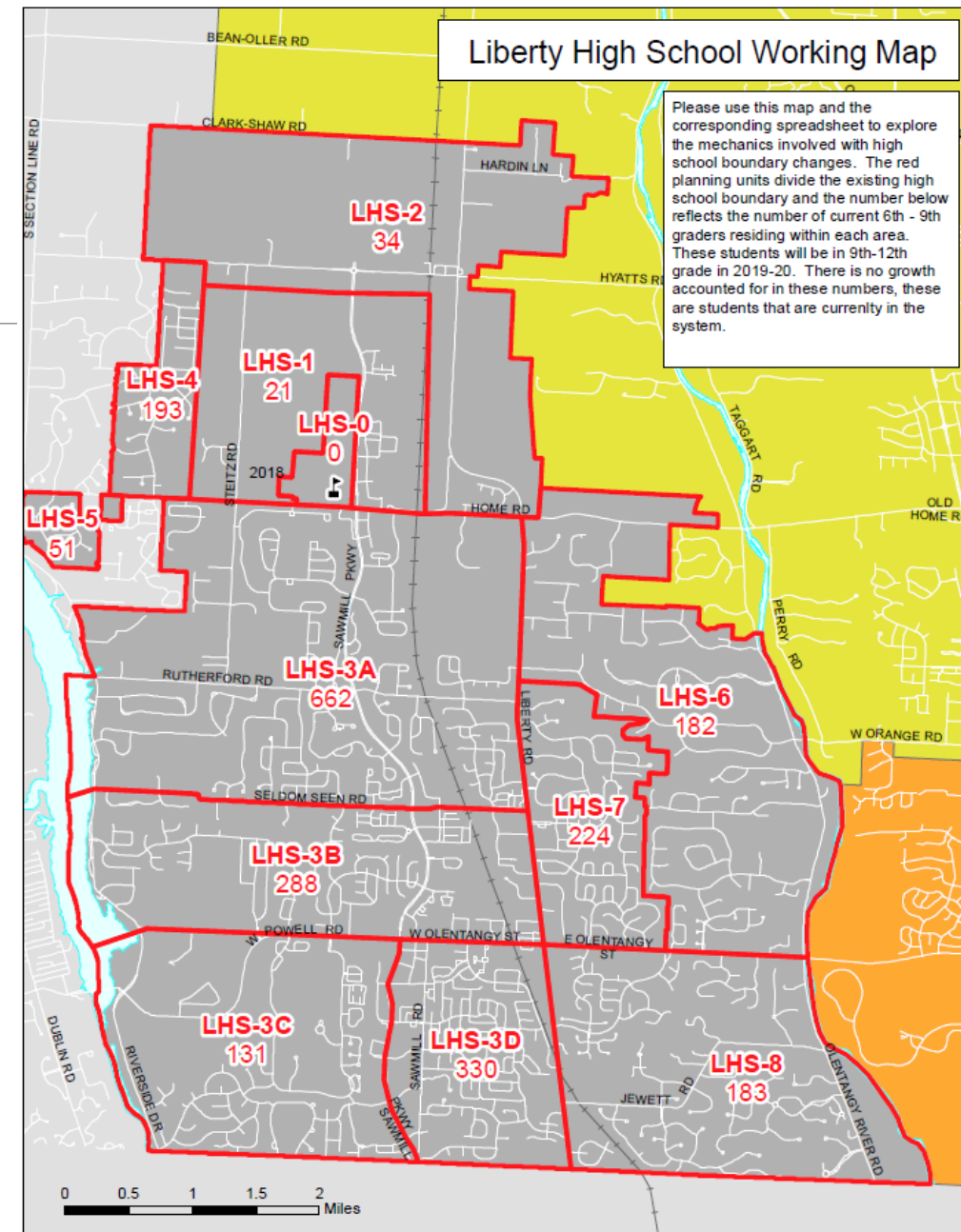
RESOLVED, The Board will strive to locate future school sites that support the preceding principles.

RESOLVED, The Board instructs the superintendent of schools of the Olentangy Local School District to adopt plans, procedures, rules and regulations that support the above principles.

[Revised Policy Adoption Date: September 29, 2015]

Homework!!!

- ✓ Based on some feedback, we divided the LHS Map up a little more, so if you printed anything and brought it with you, please throw it away.
- ✓ The intent was to understand some of the dynamics involved in reducing enrollment in each of the high schools.
- ✓ The goal was **NOT** to solve the puzzle.
- ✓ All student counts are based on 2019-20 grade advanced high school students.



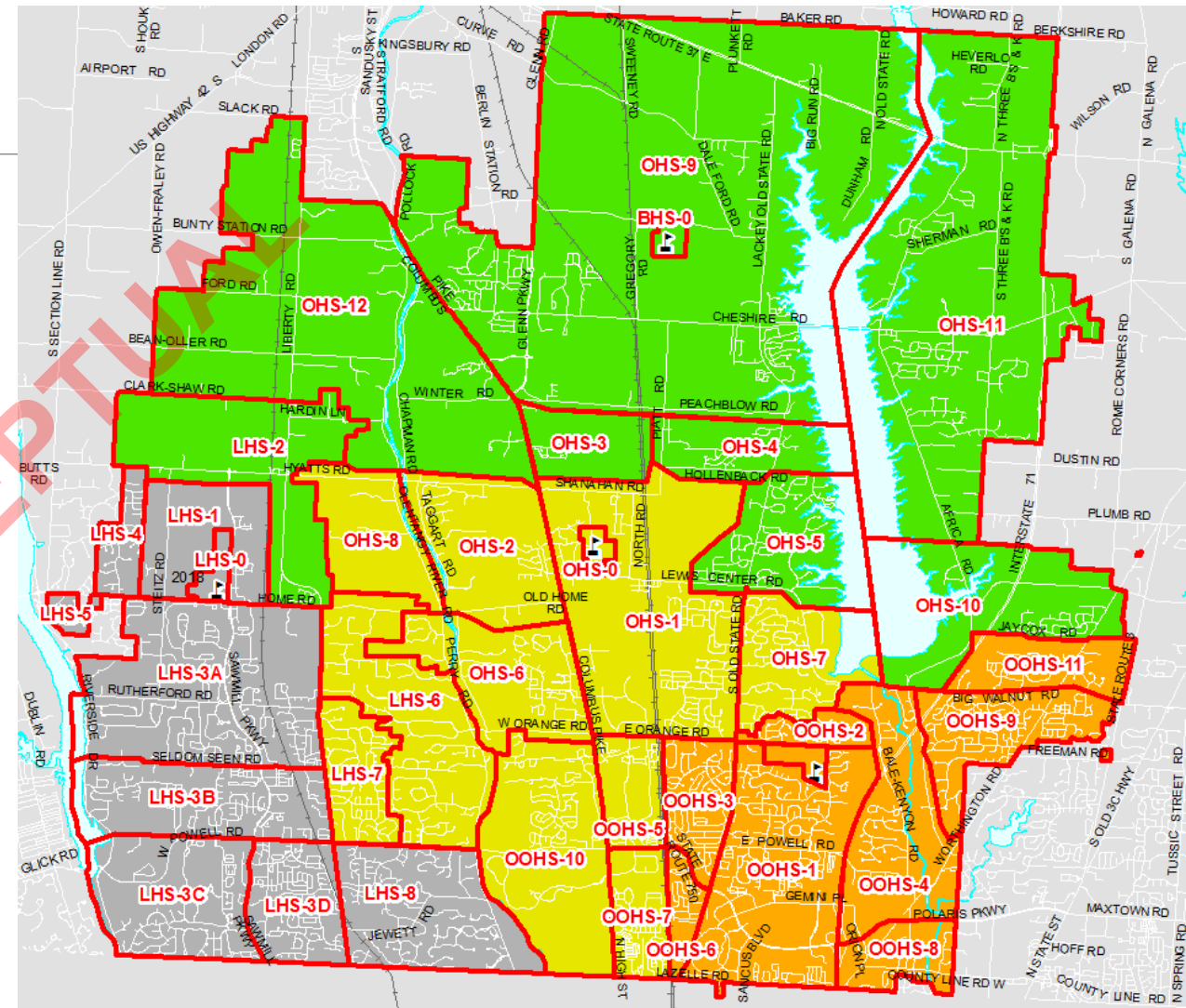
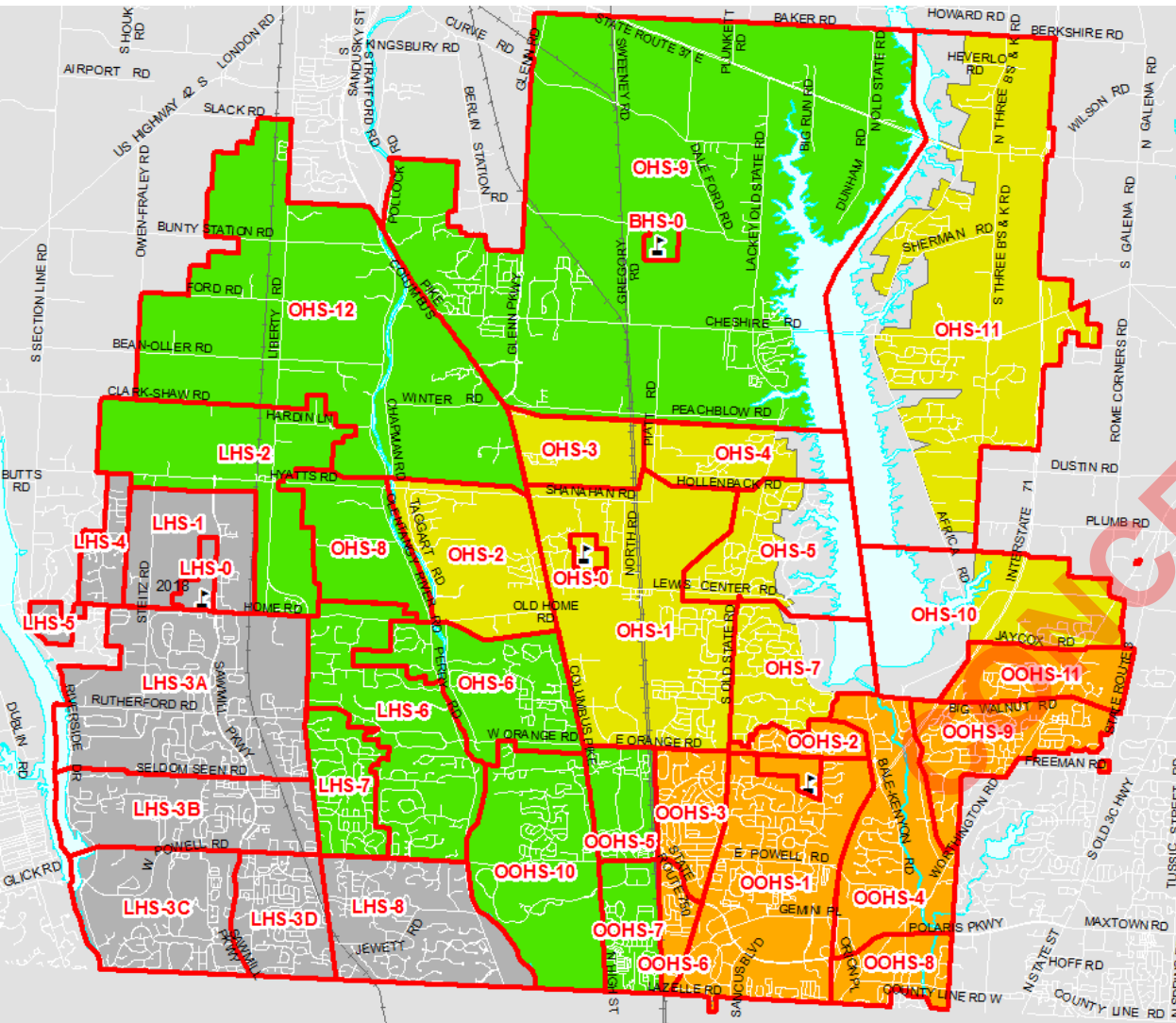
Small Group Work I (30 mins)

- ✓ Discuss and react to some of the ideas that you came up with on the homework for each of the three existing boundaries.
- ✓ Enrollment targets for each school.
 - ✓ These are going to be fluid based on how much growth potential the boundary ultimately has.
 - ✓ Total grade advanced enrollment is 6,645 (4x 1,661)
 - ✓ LHS – at or around 1,800
 - ✓ OOHS – at or around 1,800
 - ✓ OHS – at or around 1,500

Conceptual Models

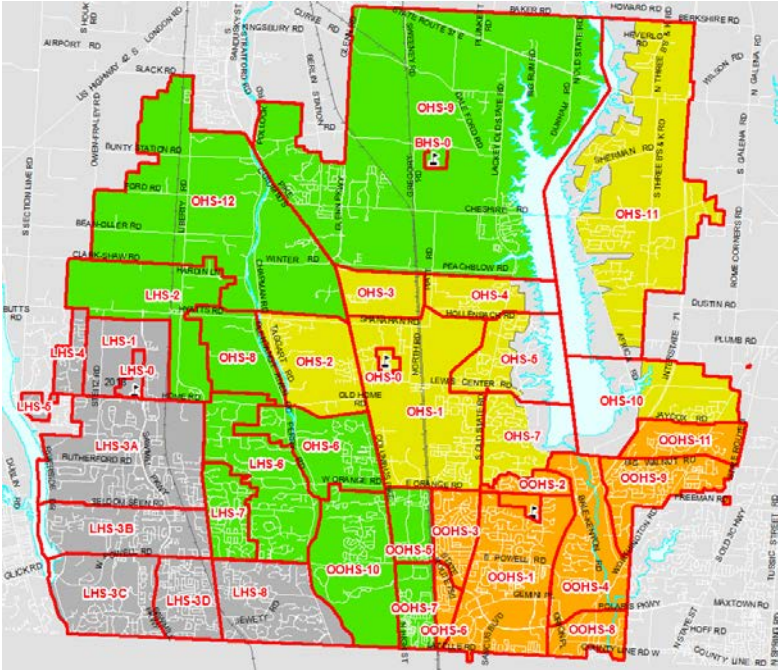
- ✓ **No Backfill** – The only boundary changes would be to BHS
 - ✓ Example: students from each of the existing high schools would be used to create the boundary of BHS
- ✓ **Backfill** – (Domino) compound boundary changes are made that move students between existing schools to create the boundary for BHS.
 - ✓ Example: move students primarily out of Olentangy HS underutilizing the school, and then fill it back up with students from LHS or OOHS

Backfill (Domino)



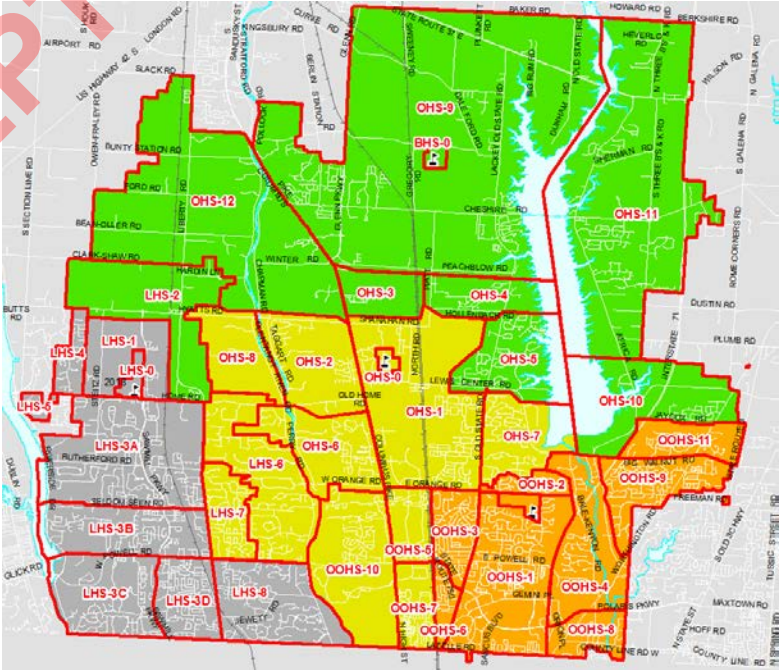
No Backfill

School	2019-20 Grade Advanced Enrollment (with no changes)	2019-20 Grade Advanced Utilization (with no changes)	Option Enrollment (Grade Advanced 2019-20)	Option Utilization @ 1,800
BHS	0	0%	1,520	84%
LHS	2,299	128%	1,859	103%
OHS	2,209	123%	1,509	84%
OOHS	2,137	119%	1,757	98%



Backfill (Domino)

School	2019-20 Grade Advanced Enrollment (with no changes)	2019-20 Grade Advanced Utilization (with no changes)	Option Enrollment (Grade Advanced 2019-20)	Option Utilization @ 1,800
BHS	0	0%	1,372	76%
LHS	2,299	128%	1,859	103%
OHS	2,209	123%	1,657	92%
OOHS	2,137	119%	1,757	98%



Small Group Work II (30 mins)

- ✓ Discuss and react to each of models on the sheets provided
 - ✓ Pros, Cons, Adjustments / Comments
- ✓ Unhide all of the tabs in your workbook and utilize it as a tool to help you understand the dynamics.
- ✓ You are providing feedback for us to consider as we develop more high school options and begin to overlay elementary and middle school options.
- ✓ Enrollment Targets for each school.
 - ✓ LHS – at or around 1,800
 - ✓ OOHS – at or around 1,800
 - ✓ OHS – at or around 1,500
 - ✓ BHS – at or around 1,500

Meeting Schedule & Timeline

~~Tuesday, October 4, 2016 (ABC Meeting)~~

Tuesday, November 1, 2016 (ABC Meeting)

Wednesday, December 7, 2016 (ABC Meeting)

Wednesday, January 11, 2017 (ABC Meeting)

Wednesday, January 25, 2017 (ABC Meeting)

Monday, January 30, 2017 (Community Forum- Liberty HS)

Monday, February 6, 2017 (Community Forum- Olentangy HS)

Monday, February 13, 2017 (Community Forum- Orange HS)

Tuesday, March 7, 2017 (ABC Meeting)

Thursday, March 16, 2017 (Superintendent decision announced)

Homework and Next Meeting

- ✓ Demographic update will be presented to the BOE on November 11
 - ✓ We will post the presentations and documents on the ABC website and we will send a notice once posted.
 - ✓ Please review before the next meeting.
- ✓ Next meeting: Tuesday December 7, 2016