

A large, light gray circular graphic on the left side of the page contains white silhouettes of a teacher and a student. The teacher is on the left, and the student is on the right, both facing right. The teacher's silhouette is larger and more detailed, showing a head with hair and a body. The student's silhouette is smaller and simpler, showing a head and a body.

OLENTANGY | LOCAL SCHOOL DISTRICT

Our mission is to facilitate maximum learning for every student

Build-Out Plan Alignment Options

February 2005

A large, light gray circular graphic on the left side of the page contains white silhouettes of a teacher and a student. The teacher is on the left, leaning forward, and the student is on the right, looking up at the teacher.

OLENTANGY | LOCAL SCHOOL DISTRICT

Our mission is to facilitate maximum learning for every student

This is a work in progress.

Comparison Districts Configurations (In Order By ODE Descriptors)

Olentangy Local	K-5, 6-8, 9-12
Dublin City	K-5, 6-8, 9-12
Mason City	K-3, 4-6, 7-8, 9-12
Centerville City	K-5, 6-8, 9-12
Hudson City	K-1, 2 and 2-3, 4-5, 7-8, 9-12
Beavercreek City	K-5, 6-8, 9-12
Worthington City	K-6, 7-8, 9-12

Comparison Districts Configurations (In Order By ODE Descriptors)

New Albany Plain Local	K-1, 2-5, 6-8, 9-12
Sycamore Community City	K-4, 5-6, 7-8, 9-12
Solon City	K-4, 5-6, 7-8, 9-12
Indian Hill Exempted Village	K-2, 3-5, 6-8, 9-12
Hilliard City	K-5, 6, 7-8, 9-12
Lakota Local	K-6, 7-8, 9, 10-12
Perrysburg Exempted Village	K-5, 6-8, 9-12

Comparison Districts Configuration (In Order By ODE Descriptors)

Upper Arlington City	K-5, 6-8, 9-12
Orange City	K-5, 6-8, 9-12
Forest Hills Local	K-6, 7-8, 9-12
Brecksville-Broadview Heights City	K-3, 4-5, 6-8, 9-12
Kenston Local	K-4, 5-8, 9-12
Sylvania City	K-5, 6-8, 9-12
Gahanna-Jefferson City	K-4, 6-8 and 6-9, 8-12

Other Area Schools (Not in Comparison Districts)

Pickerington Local	K-4, 5-6, 7-8, 9-12
South-Western City	K-4, 5-6, 7-8, 9-12
Westerville City	K-5, 6-8, 9-12
Olentangy Local	K-5, 6-8, 9-12



Common Configuration Threads (23 Districts)

- Olentangy not included in comparisons
- All but two of the districts are rated excellent on state report card 2004/05
- All but two have high schools at 9-12
- Size of high schools vary throughout comparison districts
- Six have more than one high school



Common Configuration Threads (23 Districts)

- Nine have middle schools of 7-8
- Eleven have middle schools of 6-8
- Seven have K-5, 6-8 and 9-12
- Four have K-4, 5-6, 7-8 and 9-12
- Elementary school configurations vary among districts
- Capacity of buildings within group have wide variations

A large, light gray circular graphic on the left side of the slide contains a white silhouette of an adult (teacher) leaning over to look at a smaller child (student).

Conclusions

- Variety of configurations used in grades K-8 with positive outcomes
- Confirms 2000 Board research that configuration doesn't necessarily impact academic performance
- Configuration appears to be more of a factor of community needs



Other Research

- Educational Research Service, Informed Educator Series “2004”
 - U. S. Public Schools 2002-2003 just under 15,000 districts
 - K-5 Average enrollment: 475
 - 6-8 Average enrollment: 653
 - 9-12 Average enrollment: 852



Other Research

- Districts make configuration changes for a variety of reasons:
 - Plan for projected increases in enrollment
 - Address budget problems
 - Enhance academic and student performance
 - Relieve overcrowding
 - Move towards improve diversity



Other Research

- Impact of Making Change
 - 48.9% reported no opposition to change
 - 42.2% reported that if encountered it was most likely during the discussion phase
 - Effective planning and communication critical if configuration change is implemented

A large, light gray circular graphic on the left side of the slide contains white silhouettes of an adult and a child. The adult is on the left, leaning slightly towards the child on the right. The child is smaller and positioned in front of the adult's torso.

Current Configuration

- Size (capacity) of middle schools and high schools don't permit direct alignment
- High school grade level – 400
- Middle school grade level – 300
- Grade configuration contributes to challenges

A large, light gray circular graphic on the left side of the slide contains white silhouettes of an adult and a child. The adult is on the left, and the child is on the right, both facing right. The title text is positioned to the right of this graphic.

Considerations in Configuration Change

- Total cost to taxpayers for buildings and operation
- Reduce impact of students and families through build-out
- Impact on current facilities
- Utilization of currently owned and gifted sites



Configuration Notes

- No perfect options
- Depending on exact build-out numbers, configuration and building size will need to be flexible, not fixed
- Grade configuration change would improve alignment and reduce impact to students and families

Building Requirements Based on Current Configuration

Enrollment	High School (9-12)	Middle School (6-8)	Elementary School (K-5)	Building Cost* (# of Buildings)
24,154	6,280 @ 1600 = 3.93 (4)	5,555 @ 900 = 6.18 (6)	12,319 @ 650 = 19.0 (19)	\$496 million (29)
26,298	6,837 @ 1600 = 4.27 (4)	6,048 @ 900 = 6.72 (7)	13,413 @ 650 = 20.6 (20)	\$525 million (31)
29,903	7,775 @ 1600 = 4.86 (5)	6,878 @ 900 = 7.65 (8)	15,250 @ 650 = 23.46 (23)	\$622 million (36)

*Based on current costs of elementary schools at \$10 million, middle schools at \$19 million and high schools at \$48 million. There is no inflation for future buildings and prior buildings are also at current costs.



Options

- Reviewed a variety of configurations
- Focused on considerations
- Considered information from common threads
- Presenting four possible options
- Will need to finalize impact of operating cost based on final considerations

Current HS/MS Building Capacities (Design–Stretch)

Olentangy High School	1400 – 1600	9-12
Liberty High School	1600 – 1700	9-12
Liberty Middle School	900 – 1000	6-8 or 7-8
Orange Middle School	900 – 1000	6-8 or 7-8
Shanahan Middle School*	900 – 950 900 – 950	6-8 or 7-8 1-8

*Capacity can be increased or decreased depending on use of Shanahan Elementary.

Current Elementary Building Capacities (Design–Stretch)

Wyandot Run Alum Creek Scioto Ridge Arrowhead	650 – 690 or 520 – 620	K-5 or 1-5 or 1-6
Indian Springs Oak Creek Tyler Run Walnut Creek Glen Oak	650 – 690	K-5

A large, light gray circular graphic on the left side of the slide contains a white silhouette of an adult and a child. The adult is on the left, leaning slightly towards the child on the right. The child is smaller and positioned in front of the adult's torso.

Limitations

- Reduce capacity of middle school to 600 or 200 per grade level
- Would add three middle schools at build-out
- Making total of ten middle schools
- Ten doesn't align with four high schools

A large, light gray circular graphic on the left side of the slide contains a white silhouette of an adult man and a child. The man is on the left, leaning slightly towards the child on the right. The child is smaller and appears to be looking up at the man.

Limitations

- Increase the size of high schools to 2400
- Current high school building(s) infrastructure wouldn't accommodate without massive remodeling
- Liberty High School – to 2100 by adding wing



Limitations

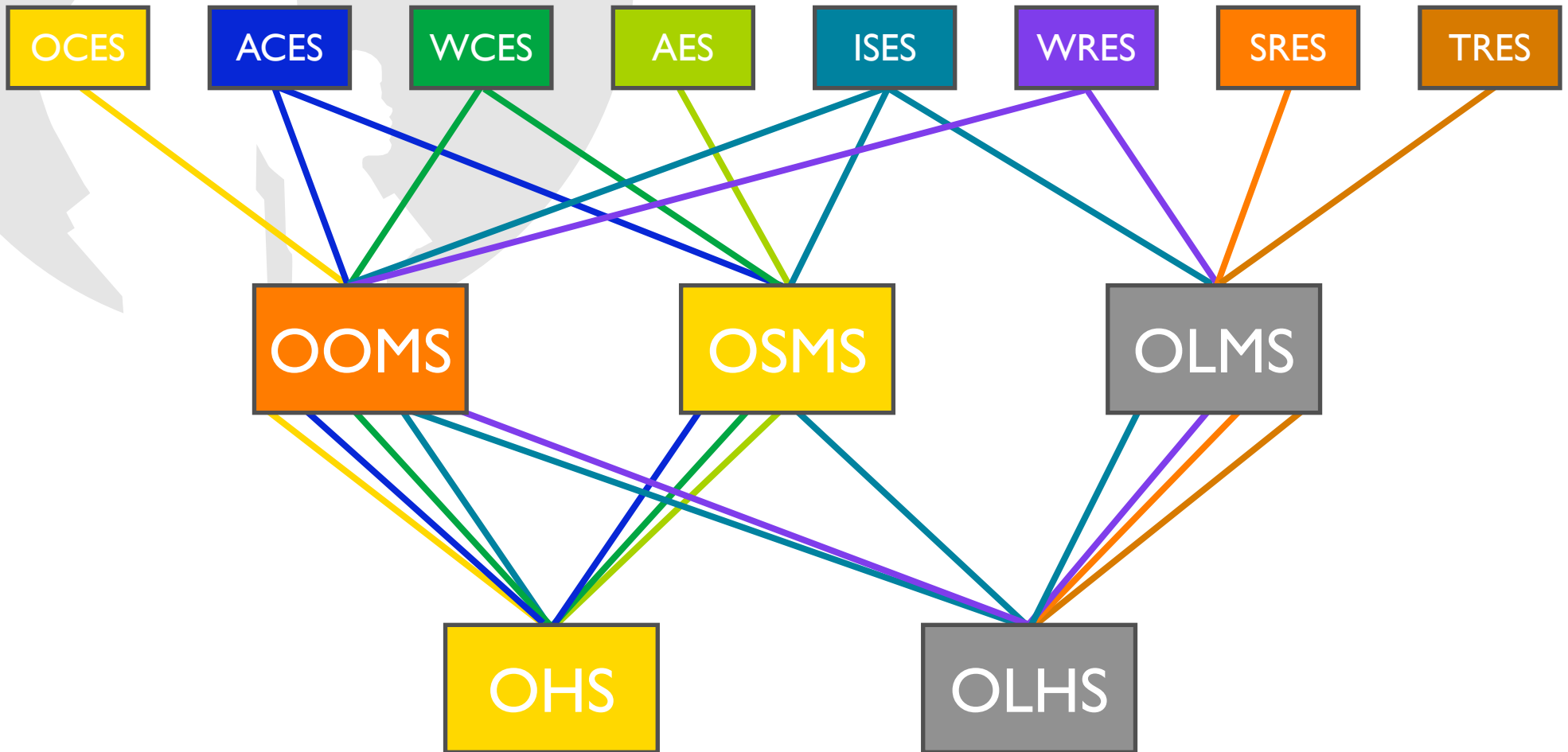
- Olentangy High School – require extensive remodeling
- Estimated cost of over \$20 million
- Land availability would impact number and location of outdoor fields and parking
- Site would not allow this amount of addition



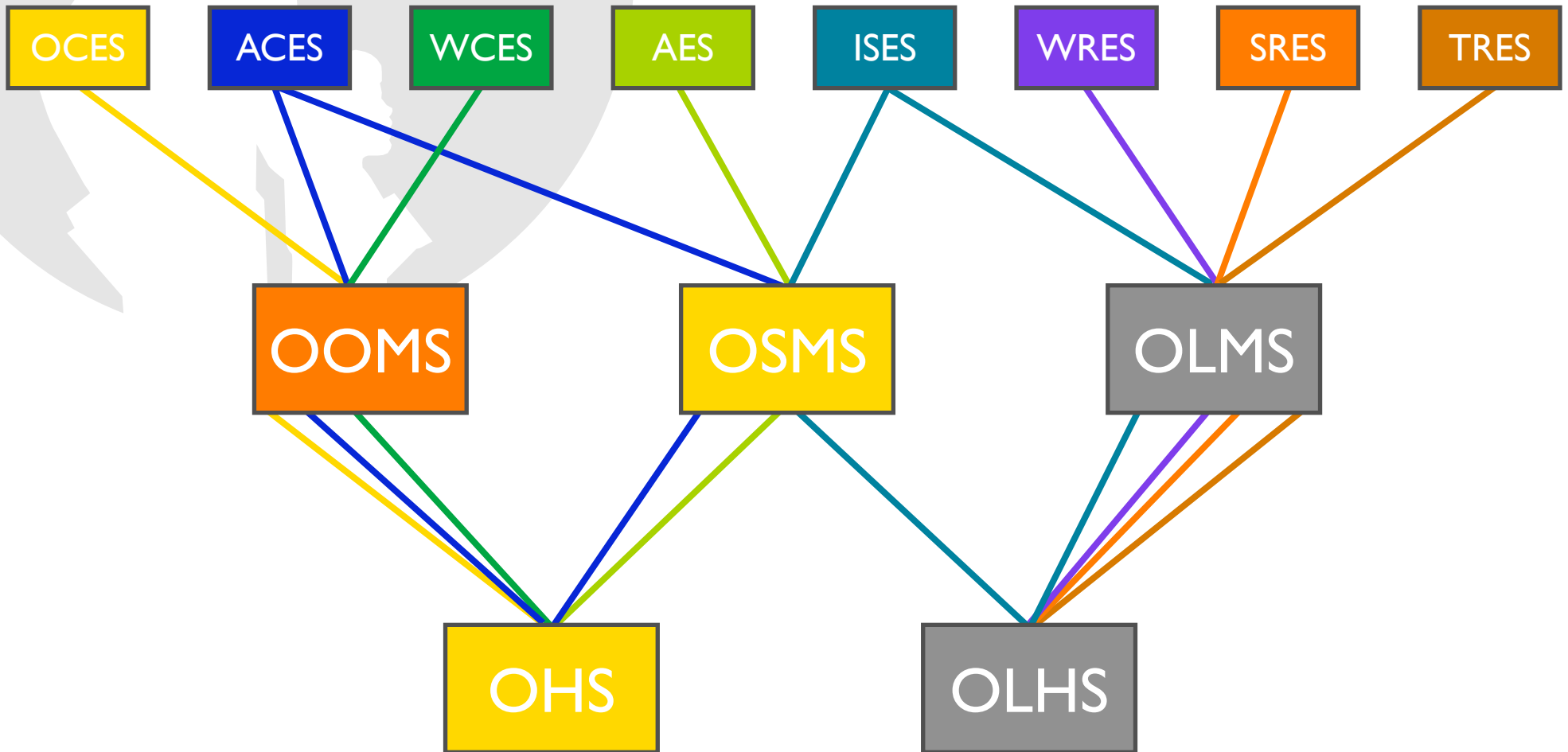
Option I – Leave it Alone

- Independent boundaries at each level of configuration
- Some direct alignment
- May not be the lowest overall cost option
- High level of student and family impact
- A change in redistricting parameters would improve this option (eliminate independent boundaries; start with high school, then middle school, then elementary school)
- This plan will work

Current Alignment from Elementary to Middle School to High School



Possible Adjusted Alignment



Option 2

Using Configuration of K-4, 5-6, 7-8 & 9-12

Enrollment	High School	Grades 7-8	Grades 5-6	Grades K-4	Building Cost* (# of Buildings)
24,154	6,280 @ 1600 = 3.93 (4)	3,623 @ 800 = 4.52 (4)	3,865 @ 800 = 4.83 (5)	10,386 @ 650 = 15.98 (16)	\$528 Million (29)
26,298	6,837 @ 1600 = 4.27 (4)	3,945 @ 800 = 4.93 (5)	4,208 @ 800 = 5.26 (5)	11,308 @ 650 = 17.40 (17)	\$547 Million (31)
29,903	7,775 @ 1600 = 4.86 (5)	4,485 @ 800 = 5.60 (6)	4,784 @ 800 = 5.98 (6)	12,858 @ 650 = 19.78 (20)	\$662 Million (37)

*Based on current costs of K-4 at \$10 million, 5-6 at \$16 million, 7-8 at \$19 million and high schools at \$48 million. There is no inflation for future buildings and prior buildings are also at current costs.

A large, light gray circular graphic on the left side of the slide contains a white silhouette of a woman and a child. The woman is on the left, and the child is on the right, both facing right. The text is positioned to the right of this graphic.

Option 2

Using Configuration of K-4, 5-6, 7-8 & 9-12

- Highly used within comparison districts
- Depending on exact build-out numbers would still face alignment issues
- Other building options available to house 5-6 grades

Option 2A

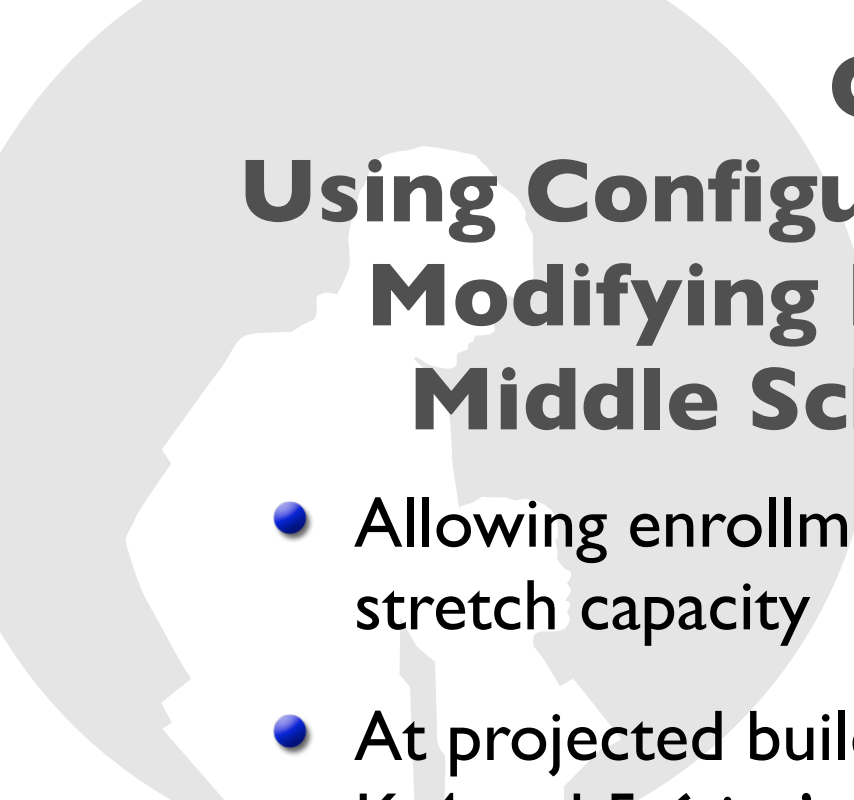
Using Configuration from Option #2

Modifying Building into Stretch Capacity When Necessary**

Enrollment	High School	Grades 7-8	Grades 5-6	Grades K-4	Building Cost* (# of Buildings)
24,154	6,280 @ 1570 = 4	3,623 @ 905 = 4	3,865 @ 966 = 5	10,386 @ 649 = 16	\$504 Million (29)
26,298	6,837 @ 1709 = 4	3,945 @ 986 = 4	4,208 @ 842 = 5	11,308 @ 665 = 17	\$524 Million (30)
29,903	7,775 @ 2100 = 4 (3 @ 2100) (1 @ 1400)	4,485 @ 897 = 5	4,784 @ 957 = 5	12,858 @ 643 = 20	\$598 Million (34)

*Based on current costs of K-4 at \$10 million, 5-6 at \$16 million, 7-8 at \$19 million and high schools at \$48 million. There is no inflation for future buildings and prior buildings are also at current costs.

**Grade level enrollment based on average per building.

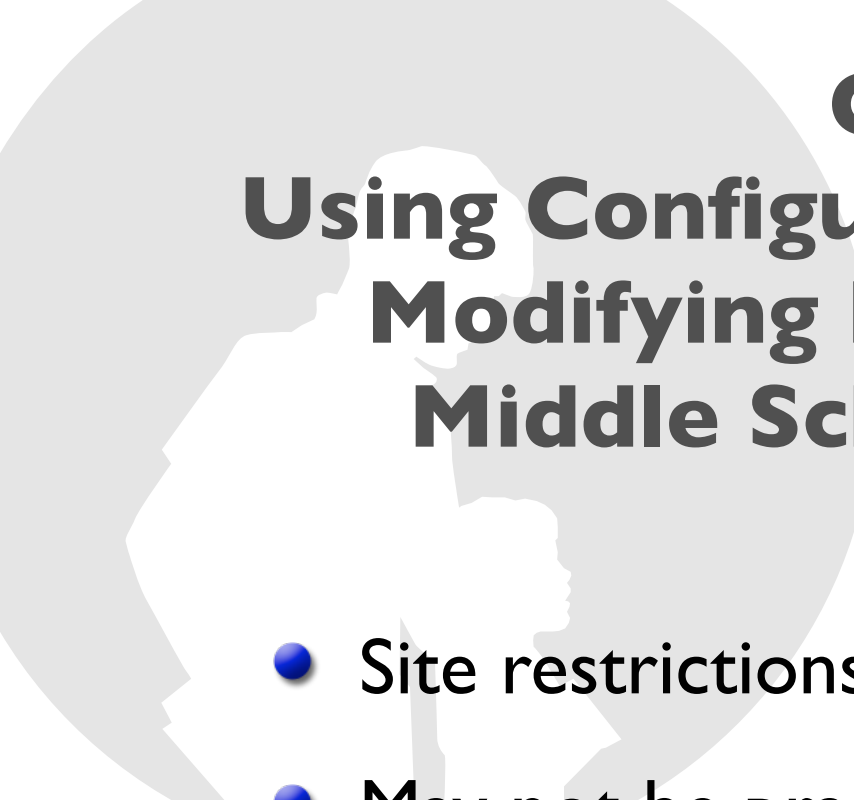


Option 2A

Using Configuration from Option #2

Modifying Building Capacity of Middle School & High School

- Allowing enrollment to go above design capacity up to stretch capacity
- At projected build-out enrollment alignment between K-4 and 5-6 isn't clean
- Would require additional building cost not in projected cost
- Configuration would work
- All high schools but Olentangy have ability to be expanded up to 2100 students



Option 2A

Using Configuration from Option #2

Modifying Building Capacity of Middle School & High School

- Site restrictions at Olentangy High School
- May not be practical
- Some modifications to Olentangy High School to reach 1600-1700 capacity
- Cost – approximately \$10 million

Option #3 - Using Configuration of K-3, 4-6, 7-8 & 9-12

Enrollment	High School 9-12	Grades 7-8	Grades 4-6	Grades K-3	Building Cost* (# of Buildings)
24,154	6,280 @ 1570 = 4	3,623 @ 905 = 4	5,845 @ 584 = 11	8,381 @ 645 = 13	\$507 Million (31)
26,298	6,834 @ 1709 = 4	3,945 @ 986 = 4	6,364 @ 530 = 12	9,125 @ 652 = 14	\$540 Million (34)
29,903	7,775 @ 1555 = 5	4,485 @ 897 = 5	7,237 @ 557 = 14	10,376 @ 649 = 16	\$651 Million (39)

*Based on current cost of K-3 at \$10 million, 4-6 at \$12 million, 7-8 at \$19 million and high schools at \$48 million. There is no inflation for future buildings and prior buildings are also at current costs.

A large, light gray silhouette of a person's head and shoulders, facing right, with a hand on their chin in a thinking pose. It is positioned behind the title text.

Option #3

Using Configuration of K-3, 4-6, 7-8 & 9-12

- Similar to Option 2A
- Intermediate (grades 4-6)
- Building similar to SRES and AES
- Would align with new state standards for certified staff
- At expected enrollment would allow three 4-6 buildings into 1 middle school into 1 high school
- One additional building and the overall operating costs will have to be calculated

Projected Enrollment (1600 housing starts) under this Option #3

Year	Grades 9-12*	Grades 7-8*	Grades 4-6*	Grades K-3*
2005/06	2,476 @ 1238 = 2	1,579 @ 790 = 2	2,621 @ 524 = 5	3,919 @ 652 = 6
2006/07	2,829 @ 1415 = 2	1,755 @ 878 = 2	2,880 @ 576 = 5	4,320 @ 617 = 7
2007/08	3,144 @ 1572 = 2	1,943 @ 972 = 2	3,191 @ 532 = 6	4,663 @ 666 = 7
2008/09	3,511 @ 1170 = 3	2,074 @ 691 = 3	3,507 @ 585 = 6	5,089 @ 636 = 8
2009/10	3,901 @ 1300 = 3	2,218 @ 739 = 3	3,802 @ 543 = 7	5,515 @ 690 = 8

*Average Building Enrollment

Projected Enrollment (1600 housing starts) under this Option #3

Year	Grades 9-12*	Grades 7-8*	Grades 4-6*	Grades K-3*
2010/11	4,208 @ 1402 = 3	2,512 @ 837 = 3	4,039 @ 577 = 7	5,941 @ 660 = 9
2011/12	4,540 @ 1513 = 3	2,701 @ 900 = 3	4,358 @ 622 = 7	6,368 @ 637 = 10
2012/13	4,965 @ 1655 = 3	2,831 @ 708 = 4	4,678 @ 585 = 8	6,793 @ 679 = 10
2013/14	5,298 @ 1325 = 4	3,044 @ 761 = 4	4,998 @ 624 = 8	7,220 @ 656 = 11
2014/15	5,722 @ 1430 = 4	3,257 @ 814 = 4	5,317 @ 590 = 9	7,645 @ 637 = 12

*Average Building Enrollment



Conclusions

- Option 3 will work through period
- Would need to take it through build out
- Flexibility would be improved by use of OSMS and Middle School #4 as 4-6 building with their increased capacity
- Worth strong consideration

Comparison of Option #1 and Option #3 @ Projected 1600 Housing Starts

OPTION #1				OPTION #3					
	9-12	6-8	K-5	Total	9-12	7-8	4-6	K-3	Total
05/06	2	3	9	14	2	2	5	6	15
06/07	2	3	10	15	2	2	5	7	16
07/08	2	4	11	17	2	2	6	7	17
08/09	3	4	12	19	3	3	6	8	20
09/10	3	4	13	20	3	3	7	8	21
10/11	3	5	14	22	3	3	7	9	22
11/12	4	5	15	24	3	3	7	10	23
12/13	4	5	16	25	3	4	8	10	25
13/14	4	6	17	27	4	4	8	11	27
14/15	4	6	18	28	4	4	9	12	29

A large, light gray circular graphic on the left side of the slide contains a white silhouette of an adult man and a child. The man is on the left, leaning slightly towards the child on the right. They appear to be in conversation.

Discussion

- Questions