

A large, light gray circular graphic on the left side of the page contains white silhouettes of a man and a child. The man is on the left, and the child is on the right, both facing right. The text is positioned to the right of this graphic.

OLENTANGY | LOCAL SCHOOL DISTRICT

Our mission is to facilitate maximum learning for every student

District Build Out

December 2004



Purpose

Is it the District's desire for a build out plan to be done on the basis of independent boundaries at elementary, middle school and high school, or does the plan need revision?

A large, light gray silhouette of a person in a suit, facing right, is positioned in the upper left quadrant of the slide. The silhouette is semi-transparent, allowing the text behind it to be partially visible.

Historical Perspective

- The District experienced infancy stages of growth in the 1990's
- Board of Education in early 1990's held public forums
- To determine appropriate building sizes
- Concluded appropriate size to maximize academic achievement and hold down building and administrative cost



Historical Perspective

- Elementary schools at 650, middle schools at 900, and high schools at 2100 students
- Board of Education in 1999 confirmed elementary schools at 650 and middle schools at 900
- Lowered high schools to 1600 students
- Also studied configuration of school buildings

A large, light gray circular graphic on the left side of the slide contains white silhouettes of a man and a child. The man is on the left, leaning forward, and the child is on the right, looking up at the man. The background of the circle is a gradient from light to dark gray.

Historical Perspective

- Found configuration didn't affect student performance and achievement
- Confirmed grade levels for elementary at K–5, middle school at 6–8, and high school at 9–12



Historical Perspective

- Also discussed boundaries of elementary, middle school, and high schools
- Determined boundaries should be independent of each other
- This approach would add diversity



Historical Perspective

- Would not rely on specific north/south or east/west alignment of the district
- Also established that, at certain points in time, the alignment would create challenges
- Now experiencing adolescence and need to revisit



Build Out Plan

- Very difficult process
- Will need regular updates
- Perfect layout not an option
- Throughout build out, alignment with specific buildings will not always fit



Restrictions to Planning

- Dollar availability for land/buildings and operations
- Utilities (sewer, water, gas, and electric) availability when building is needed
- Land “for sale” at a reasonable price

A large, light gray circular graphic on the left side of the slide contains white silhouettes of a man and a child. The man is on the left, looking towards the right, and the child is on the right, looking towards the left. They appear to be in conversation.

Benefits to Planning

- Improved planning for future redistricting
- Ability to start defining more permanent school boundaries
- Improved communications with current and future residents

Current Board-Endorsed Building Configuration

- Prior research confirms that there is minimal student achievement impact based on building configuration
- 650 elementary, 900 middle school, and 1600 high school
- Assumption: 1/2 time kindergarten @ 20 students per section, 6 sections is 100 kindergarten students per building
- Assumption: 21 students per section, grades 1–5 is 110 students per grade level



Current Board-Endorsed Building Configuration

- Assumption: 900 students at middle school, 3 grade levels, is an average of 300 students per grade
- Assumption: 1600 students at high school, 4 grade levels, is an average of 400 students per grade
- Current configuration allows 2+ elementary schools aligned to a middle school



Current Board-Endorsed Building Configuration

- Current configuration assumes independent boundaries at elementary, middle school, and high schools
- Partial direct alignment system



Current Board-Endorsed Building Configuration

- Impact of this configuration felt for first time with addition of Middle School #3
- This experience has raised a question:

Is it the District's desire for a build out plan to be done on the basis of independent boundaries at elementary, middle school and high school, or does the configuration need revision?



Build Out Highlights from DeJong & Associates April 2002 Projections

Projected Total Enrollment

Existing homes and yields	24,154
<i>Current long-range planning yields</i>	26,298
Maximum based on mature subdivisions	29,903

Building Requirements Based on Current Configuration

Enrollment	High School	Middle School	Elementary School	Building Cost*
24,154	6,280 @ 1600 = 3.93 (4)	5,555 @ 900 = 6.18 (6)	12,319 @ 650 = 19.0 (19)	\$496 million
26,298	6,837 @ 1600 = 4.27 (4)	6,048 @ 900 = 6.72 (7)	13,413 @ 650 = 20.6 (20)	\$525 million
29,903	7,775 @ 1600 = 4.86 (5)	6,878 @ 900 = 7.65 (8)	15,250 @ 650 = 23.46 (23)	\$622 million

*Based on current costs of elementary schools at \$10 million, middle schools at \$19 million and high schools at \$48 million. There is no inflation for future buildings and prior buildings are also at current costs.

A large, light gray circular graphic on the left side of the slide contains the white silhouettes of three people. One person is in the foreground, and two others are behind them, all facing right. The background of the circle is a gradient from light to dark gray.

Building Requirements Based on Current Configuration

- Student yield per current building configuration and DeJong grade level projected enrollments at 2014–15
- Confirms need for: 4 high schools, 7 middle schools, and 20 elementary schools

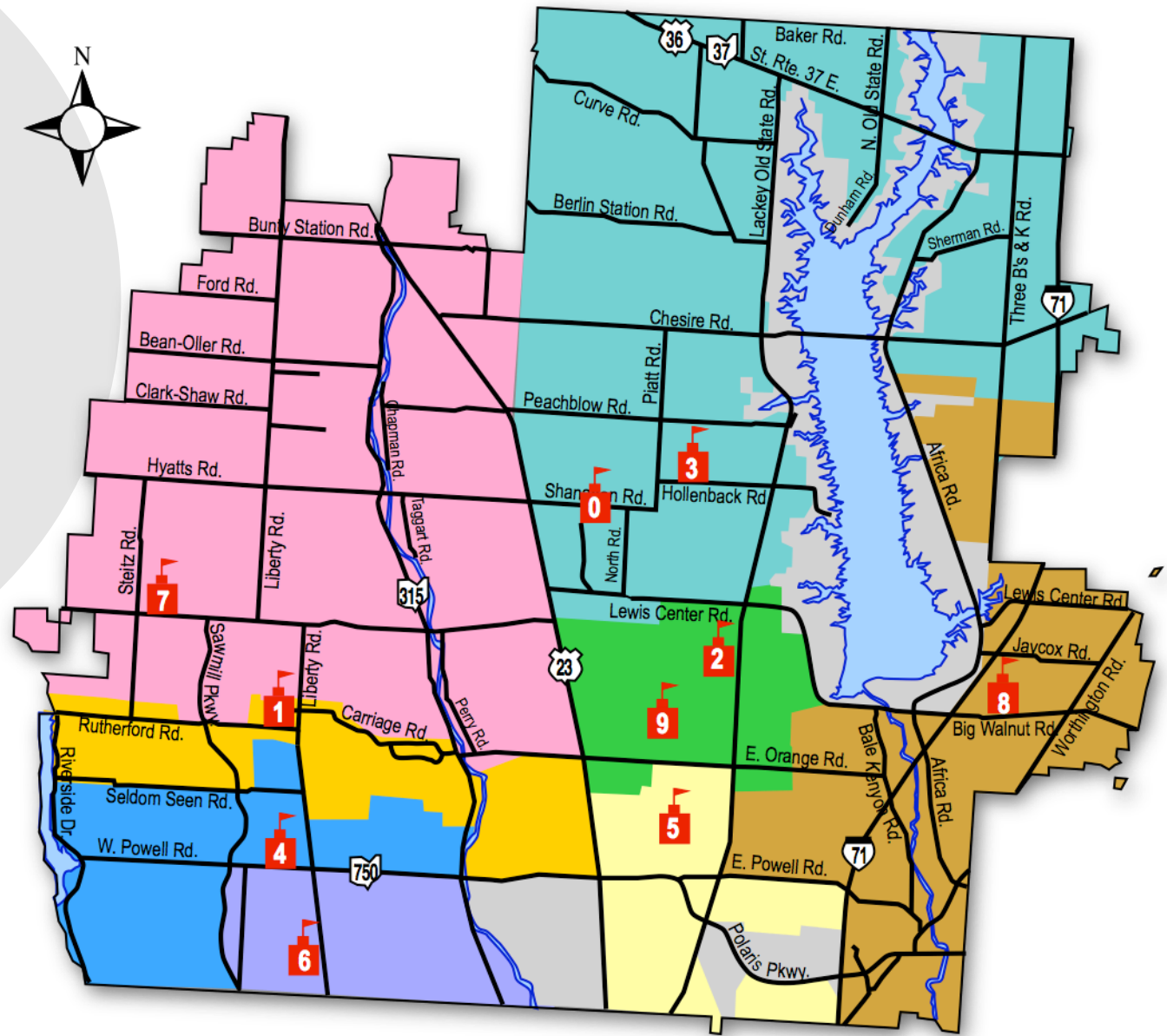


Current Configuration Grade Level Size at Building Level

Elementary School 110
(Grades 1–5 @ 110 = 550 plus
Kindergarten @ 100 = 650)

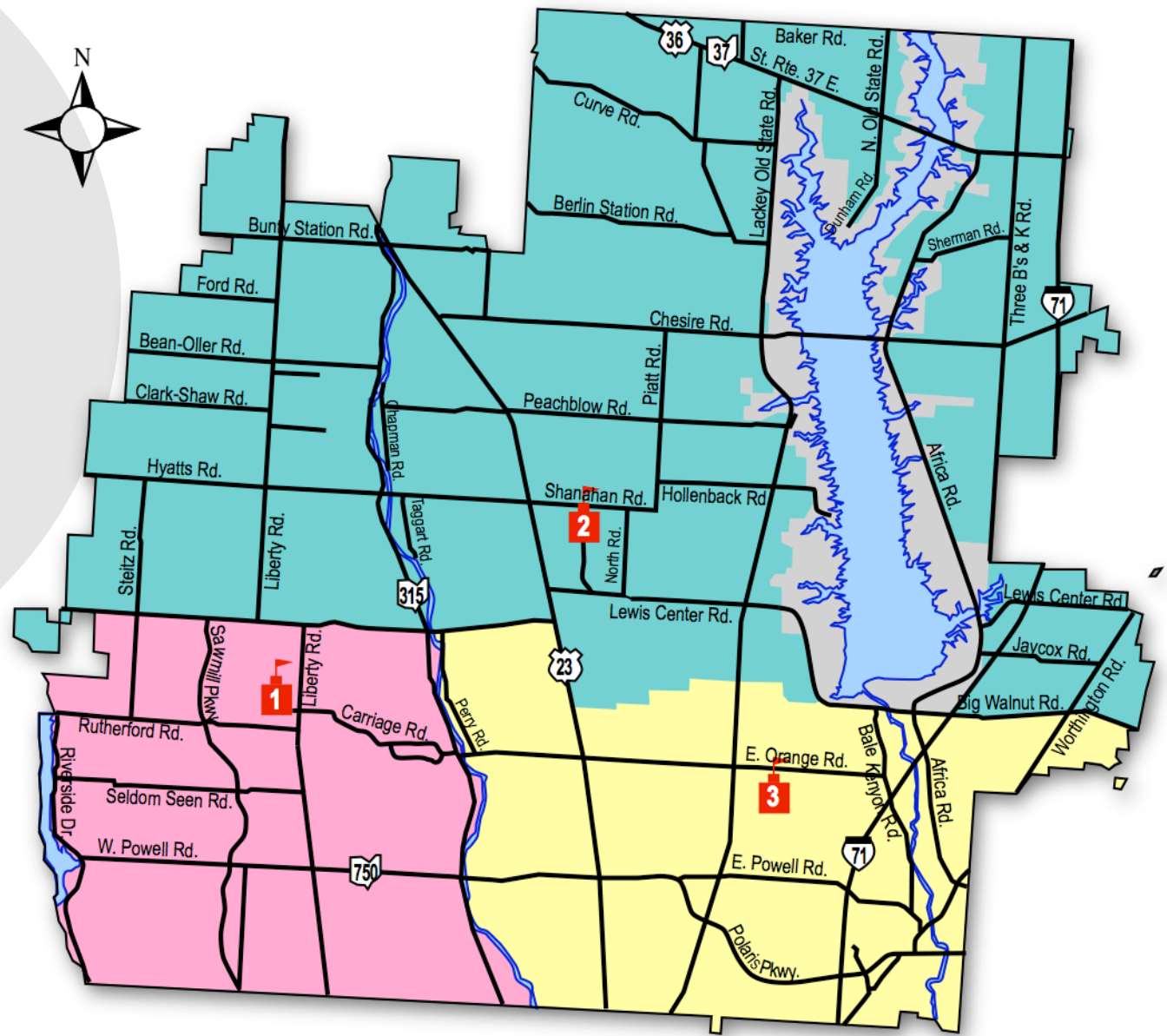
Middle School 300
(Grades 6–8 @ 300 = 900)

Current Elementary School Attendance Area Map



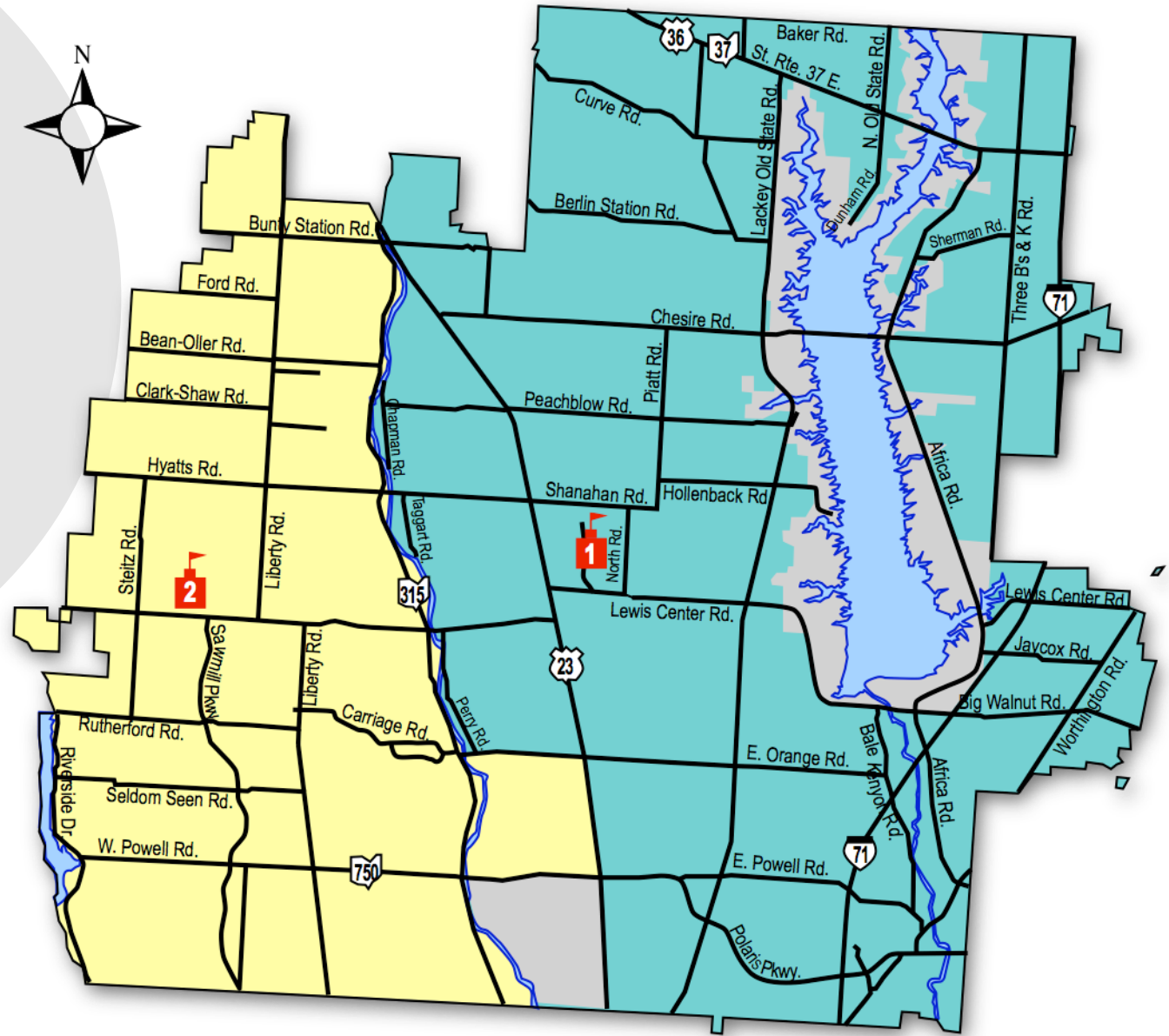
1	Wyandot Run	4	Scioto Ridge	7	Indian Springs
2	Alum Creek	5	Oak Creek	8	Walnut Creek
3	Arrowhead	6	Tyler Run	0	Shanahan
					Exempt

Current Middle School Attendance Area Map



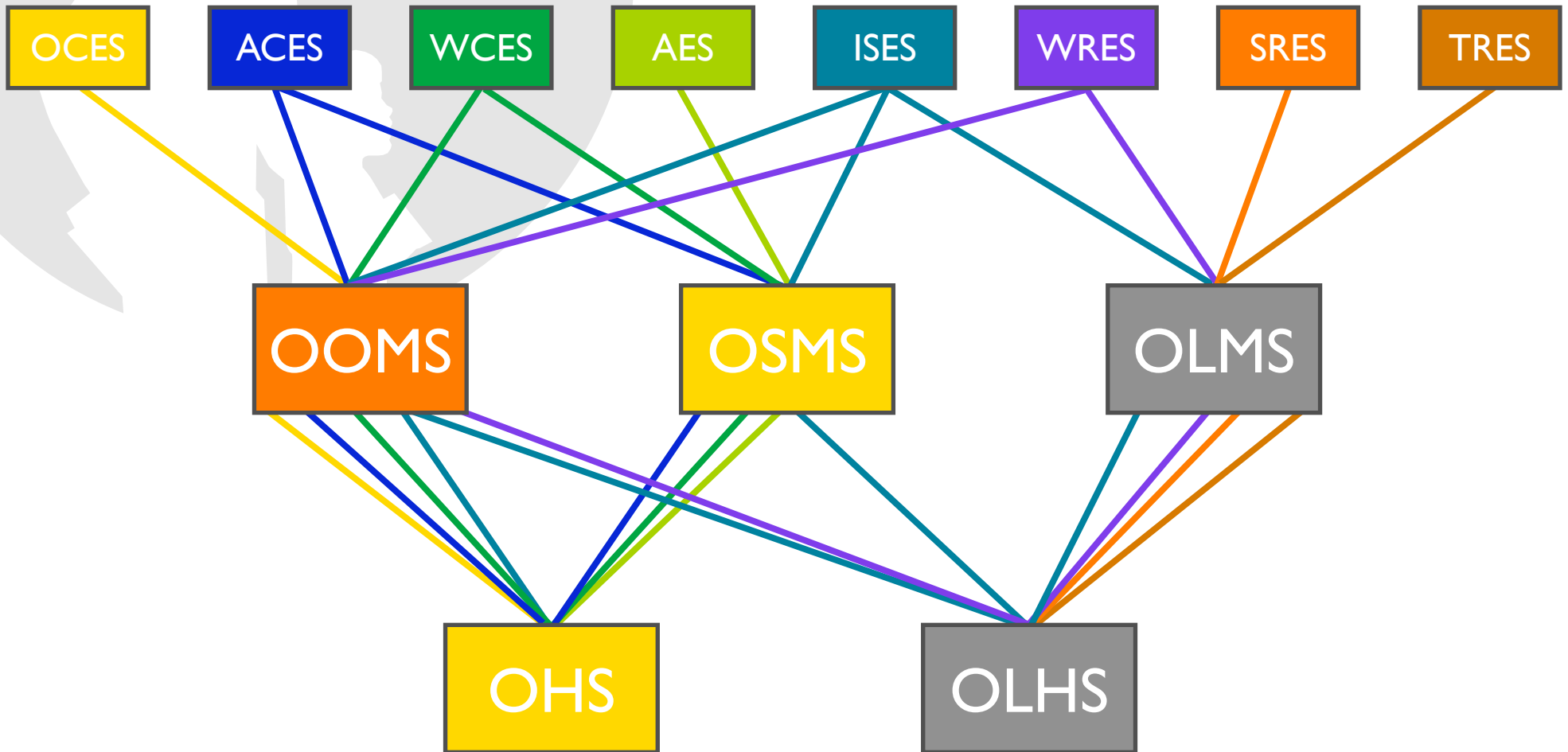
- | | | | |
|--|--------------------------|--|------------------------|
| | 1 Liberty Middle School | | 3 Orange Middle School |
| | 2 Shanahan Middle School | | Exempt |

Current High School Attendance Area Map



- 1 Olentangy High School
- 2 Olentangy Liberty High School
- Exempt

Current Alignment from Elementary to Middle School to High School



Enrollment by Middle School Based on Plan A (2005/06)

2004/05 Building Enrollment Under Plan A if
Modified Plan A for 2004/05 Wasn't Used

Liberty Middle School	Shanahan Middle School	Orange Middle School	Total
783	700	667	2150
36%	33%	31%	

Middle School Projected Enrollment

	Current 2004/05	Projected 2005/06	Projected 2006/07	Projected 2007/08	Projected 2008/09
Grade 6	775	848	963	979	1107
Grade 7	718	820	893	1008	1024
Grade 8	657	759	862	936	1050
Total	2150	2427	2718	2921	3181

Notes:

- “Current” means the figures are based on November 5, 2004 enrollment report.
- “Projected” are taken from October 2004 DeJong enrollment report based on 1600 new homes built.

Orange Middle School

Based on 31% of Grades 6–8 Population

	2005/06	2006/07	2007/08*	2008/09*
Grade 6	280	318	323	365
Grade 7	271	295	333	338
Grade 8	251	285	309	347
Total	802	898	965	1050

* Middle School #4 planned opening year. Figures do not reflect that change.

Shanahan Middle School

Based on 33% of Grades 6–8 Population

	2005/06	2006/07	2007/08*	2008/09*
Grade 6	263	298	303	343
Grade 7	254	277	312	317
Grade 8	235	267	290	326
Total	752	842	905	986

* Middle School #4 planned opening year. Figures do not reflect that change.

Projected Enrollment Liberty Middle School Based on 33% of Grades 6–8 Population

	2005/06	2006/07	2007/08*	2008/09*
Grade 6	304	340	366	398
Grade 7	281	315	338	369
Grade 8	288	323	347	378
Total	873	978	1051	1145

* Middle School #4 planned opening year. Figures do not reflect that change.

Current High School Enrollment 2004/05*

	9th	10th	11th	12th	Total
Olentangy	302	301	256	247	1106
Liberty	297	309	241	220	1067
TOTAL	599	610	497	467	2173

* Based on November 5, 2004 Enrollment Report

High School Projected Enrollment*

	Current 2004/05	Projected 2005/06	Projected 2006/07	Projected 2007/08	Projected 2008/09
Grade 9	599	695	794	898	970
Grade 10	610	630	723	822	925
Grade 11	497	634	655	747	846
Grade 12	467	516	658	678	770
TOTAL	2173	2476	2829	3144	3511

* Based on DeJong October 2004 report based on 1600 housing starts.

Projected High School Enrollment 2005/06*

	9th	10th	11th	12th	Total
Olentangy	364	321	323	267	1275
Liberty	331	309	311	249	1200
TOTAL	695	630	634	516	2475

* Based on DeJong October 2004 report. Design capacity of Olentangy High School is 1400 and Liberty High School is 1600.

Projected High School Enrollment 2006/07*

	9th	10th	11th	12th	Total
Olentangy	428	384	335	334	1481
Liberty	366	339	320	324	1349
TOTAL	794	723	655	658	2830

* Based on DeJong October 2004 report. Design capacity of Olentangy High School is 1400 and Liberty High School is 1600.

Projected High School Enrollment 2007/08*

	9th	10th	11th	12th	Total
Olentangy	493	445	399	348	1685
Liberty	405	377	348	330	1460
TOTAL	898	822	747	678	3145

* Based on DeJong October 2004 report. Design capacity of Olentangy High School is 1400 and Liberty High School is 1600.

Projected High School Enrollment 2008/09*

	9th	10th	11th	12th	Total
Olentangy	523	512	461	415	1911
Liberty	447	413	385	355	1600
TOTAL	970	925	846	770	3511

* Projected enrollment if High School #3 doesn't open as scheduled on Development Committee November 16, 2004 report.

A large, light gray circular graphic on the left side of the slide contains white silhouettes of an adult and a child. The adult is on the left, and the child is on the right, both facing right. The text is positioned to the right of this graphic.

Critical Alignment Years (Based on 1600 Housing Starts)

- New elementary scheduled to open each year
- 2007/08 and 2008/09 – Middle School #4 and High School #3 will open
- 2010/11 – Middle School #5 will open



Critical Alignment Years (Based on 1600 Housing Starts)

- 2013/14 – Middle School #6 will open
- 2016/17 – Middle School #7 will open and we will exceed the design capacity of our four high schools
- Decision needs to be made in 2013 if we don't want to go to five high schools



Key Alignment Points

- Advanced planning regardless of building configuration is critical
- Using these alignments for redistricting will reduce impact on students and families
- Following alignment plans more critical than balancing building enrollment



Key Alignment Points

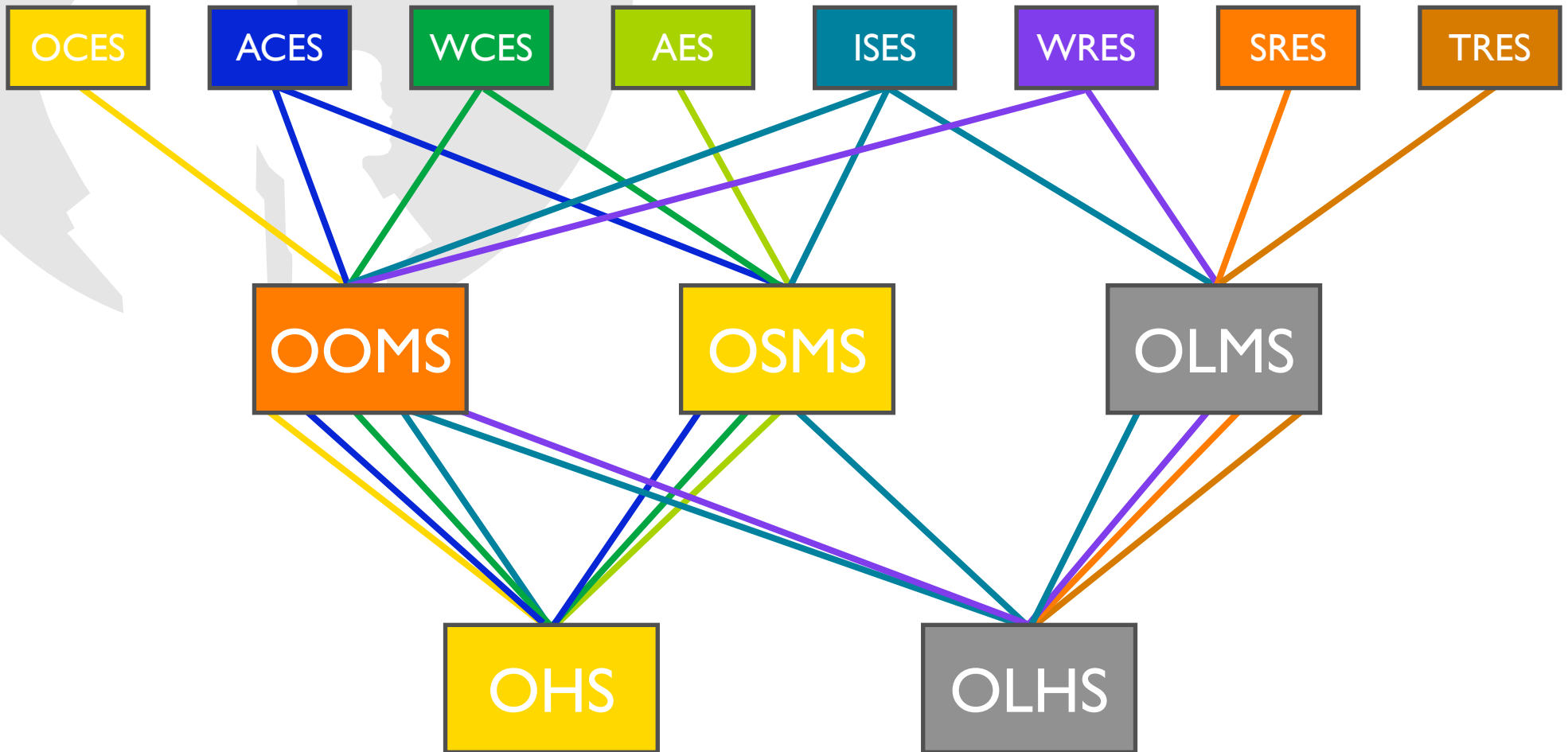
- Modifying current building configuration could lessen the impact during these key points
- Continued community support of schools, both bond and operating issues essential for successful implementation



Conclusions

- Current plan will work
- Current alignment may cause increased redistricting dissatisfaction
- No solution perfect but could minimize redistricting
- Need to revisit prior configuration decisions to verify if they still best meet the needs of the district today and through build out

Current Alignment from Elementary to Middle School to High School



A large, light gray circular graphic in the upper left corner contains the white silhouette of an adult and a child. The adult is on the left, leaning slightly towards the child on the right. The child is smaller and appears to be looking up at the adult.

Question:

Is it the District's desire for a build out plan to be done on the basis of independent boundaries at elementary, middle school and high school, or does the plan need revision?