



The Early Childhood Program is a coordinated effort between the Delaware-Union Educational Service Center and the Olentangy Local School District

Staff

A state certified intervention specialist and an educational assistant lead each class. Children with special needs can receive additional support from a speech/language pathologist, a physical and/or occupational therapist as the child's IEP (Individualized Education Program) specifies within the educational setting. Specific goals are developed for each child by the team, and staff may work with children individually or in groups. All children in the program benefit from interaction with the therapists as they work collaboratively with staff on overall program goals and objectives.

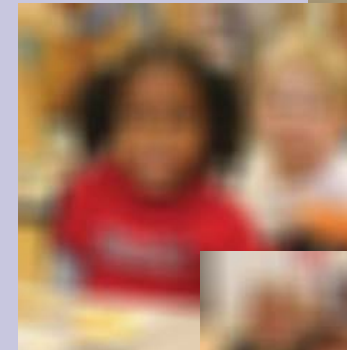


For more information contact:

Olentangy Preschool
6877 Sawmill Pkwy
Powell, OH 43065
Telephone: (740) 657-4350
Fax: (740) 657-4399

or visit
www.olentangy.k12.oh.us

Olentangy Early Childhood Special Education Programs



*Meeting the Unique Needs
of Each Child*

Delaware-Union Educational Service Center
Leading the Way to Educational Excellence

Our Philosophy

The Child Development Center is child-oriented and devoted to meeting the unique needs of every child. We strive to provide a safe and nurturing environment in which to foster each child's cognitive, language, social, emotional, and motor development.



We believe that children learn best through meaningful play. Learning is encouraged through selected play activities appropriate for each child's age and developmental level. Teachers serve as facilitators to guide students in child-directed activities for various learning opportunities.

Center Based Classrooms

Classrooms are divided into centers such as art, dramatic play, block building, manipulatives, and sensory play. Materials and activities at each center are individualized for the children. Teacher directed activities alternate with active play throughout the day. Children also participate in teacher directed large group activities. Self-help activities are incorporated throughout the daily curriculum. Through play, self-initiated, and teacher directed activities, children refine the motor, thinking, language, and adaptive behavior skills necessary for success in school. Additional resource staff and programs include music class, social skills groups facilitated by school psychologists, and therapies by speech/language, occupational, and physical therapists based on the child's needs and eligibility.



The Olentangy Early Childhood Special Education program has adopted the AEPS (Assessment, Evaluation, Programming System) as its written curriculum. AEPS provides our staff an assessment and instructional system which focuses on fine and gross motor, cognitive, adaptive, social-communication, and communication development. AEPS is also aligned with The Early Learning Content Standards adopted by the State Board of Education.

Class Sizes and Hours

Preschool classes meet four days each week. Children attend half-day sessions 2.5 hours in the morning or afternoon. Each class has a range of 12-16 students of mixed ages (3-5 years). The programs follow the normal nine-month school schedule, and regular holidays are observed. Other center-based options are available based on the specific needs of the child.



Fees

Public preschool special education services are provided at no cost to children who have participated in a comprehensive evaluation with the school system and are eligible by Ohio Department of Education criteria as a preschool student with a disability. Payment for peer role models attending center-based classrooms are collected throughout the school year.



Parent Involvement

As the most important people in a child's life, parents are encouraged to participate in learning experiences. Open houses, parent-teacher conferences, and parent workshops are ways in which the family and school work together to fulfill the partnership in which we so strongly believe. Homevisits with the teaching staff are also scheduled a minimum of two times per year to facilitate carry-over of classroom intervention strategies and techniques and to provide connections to community-based resources.

Students

The three-to-five year-old children served by the program reflect the makeup of the general population. This diversity helps to build a foundation of compassion and acceptance toward a variety of people.



Included are:

- Peer models who demonstrate strong language and social skills and function at a level of most children their age.
- Children that have been identified through a multi-factored evaluation to have a disability as defined by Ohio's Operating Standards for Special Education.