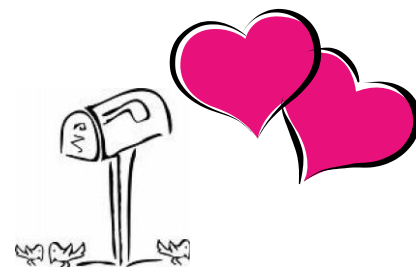


Meadows Mailbox



February/March 2012

A MESSAGE FROM THE PRINCIPALS

It is hard to believe that it is mid-February! Parent-Teacher conferences are just around the corner. They are scheduled for Thursday, February 23rd and Tuesday, February 28th from 5:00-8:00 p.m. If you have not already scheduled a conference with your child's teacher/s please call the office to schedule one (740) 657-5550. The relationship between the school and home is critical for a student's success.

The spring testing dates have been established. This information is included in this newsletter. Students in grades 2, 3, 4 and 5 will be taking the Terra Nova tests during the week of March 5th. Students in grades 3, 4 and 5 will also be taking the Ohio Achievement Assessments during the week of April 23rd. Attendance during both of these testing windows is critical. Alternate Learning Experiences (ALE) will not be approved for students that will be involved in testing.

Your partners in education,

Jen Denny
Principal



Tonya Hawk
Assistant Principal

NURSE'S NOTES



February is Heart Month

It seems like all of us must eat fast food to accommodate busy work and play schedules. Here are some hints from American Heart Association on [How to Make Fast Food Friendlier!](#) Please remember, if your young children get used to these habits now, they will probably carry them on into adulthood.

1. Just say "NO" to value size or supersize portions- embrace appropriate portion sizes.
2. Skip the sides. People can feel full twenty minutes after eating a hamburger or sandwich. Consider the fruit or side salad if you must have a side.
3. Avoid double meat. Remember a single portion of meat is about the size of a deck of cards.
4. There is never a good reason to add bacon to your sandwich. There is practically no nutritional value in bacon which is mostly fat and salt.
5. Grilled chicken without the skin is usually leaner than hamburger and thus a better choice.
6. Eat the sandwich open-face and omit half of the bun.
7. Choose whole wheat buns if available.
8. Skip the mayo - it is 100% fat. Avoid or use sparingly calorie laden dressings and sauces.
9. Drink water, diet soda or low fat milk. Regular soda is loaded with empty calories.

These small changes will add up! As with all health care concerns - prevention is so much easier than repair!

2012 MUSIC CONCERTS

Band Concert –	February 15 – 7:00pm
5th Grade Guitar concert -	March 13 - 7:00pm
T/Th Kindergarten concert	April 13 -3:00pm
M/W Kindergarten concert	-April 20 -3:00pm
Cannon's Piano Recital -	May 14-12:10pm
Parker's Piano Recital -	May 15 -12:10pm
Pulfer's Piano Recital -	May 16 - 12:10pm
Tripp's Piano Recital -	May 17 - 12:10pm
Band Concert at OOMS –	May 22 – 7:00pm
Lastrapes' Piano Recital –	May 24 – 12:10pm
4 th grade concert –	TBA



OMES PTO HAPPENINGS

February

1 st – 10 th –	Apples for Teachers
21 st – 28 th –	Book Fair
21st- 27th –	Mornings w/ Moms and Misses 8:30-8:55am
21 st	2 nd Grade
22 nd	3 rd Grade & M/W Kdg.
23 rd	4 th Grade & T/Th Kdg.
24 th	1 st Grade
27 th	5 th Grade
23 & 28 -	Family Night @ Book Fair – 5:00-8:00pm



Please visit our Book Fair Homepage for more information:

<http://bookfairs.scholastic.com/homepage/olentangymeadows>

If you're all booked up during Book Fair week (or just want to keep shopping), be sure to visit the Book Fair online at:

www.scholastic.com/schoolbookfairs

The online Book Fair is available for an extended time from Monday Feb. 13th to Friday March 2nd.

Find an expanded selection of books for the whole family—preschool to adults.

- Share your Book Fair with family and friends by sending wish lists or eCards
- All orders ship to school for FREE and each purchase benefits our school

March

29th & 30th - Kindergarten Enrichment Day (more information will come home)

Remember – Like us on Facebook!! Olentangy Meadows Elementary PTO.

April

3 rd	PTO Meeting – Dr. Lucas, District Superintendent will be here.
4 th & 5 th	Kindergarten screening
17 th	McTeacher Night at McDonalds



UPCOMING EVENTS



Feb. 13:	M/W Kdg. Valentine's Party
Feb. 14:	Valentine's Day Parties 2:45 – 3:15 pm Interims go home this week
Feb. 15:	Band Concert – 7:00pm
Feb. 20:	No School
Feb. 21-27:	Mornings w/ Mom's & Misses
Feb. 21-28	Book Fair
Feb. 23:	Parent Teacher Conferences myOlentangy Help Lab Book Fair Family Night 5:00 – 8:00 pm
Feb. 28:	Parent Teacher Conferences Book Fair Family Night myOlentangy Help Lab 5:00-8:00pm
March 1:	2 hour late start
March 2:	Classroom Group Pictures
March 5-12	TerraNova/Inview Testing
March 19-23	Spring Break

ATTENTION PARENTS OF ALL 4TH & 5TH GRADE STUDENTS

Parents will have an opportunity to preview the material used for the 4th & 5th grade growth and development classes. This is an informational meeting with the nurses to discuss and ask questions about the material your child will receive during the growth and development lecture that will be held this spring. Letters will be sent home with your child when a specific date is assigned for the student lecture.

The dates for the Parent Preview meetings are as follows:

Thursday, March 8th 6:00-8:30 p.m. at Olentangy Liberty High School

Wednesday, March 14th 6:00-8:30 p.m. at Olentangy Orange High School

If you have any questions, please contact Nurse Jane McCray 740-657-5561.

KINDERGARTEN REGISTRATION FOR 2012-13 BEGINS FEBRUARY 13TH

Screening by appointment only – April 4 & 5

Olentangy kindergarten registration for the 2012-2013 school year will begin the week of February 13. In order to increase customer service, the district has introduced a staggered start to the registration process. **Parents of students with last names that begin with the letters A through M may call the New Student Welcome Center at (740) 657-4030 or (740) 657-4033 beginning Monday, February 13. Parents of students with last names beginning with N through Z may call the NSWC beginning on Thursday, February 16.** The New Student Welcome Center is open Monday through Friday from 8 a.m. until 4 p.m.

When parents call the New Student Welcome Center, they will be given a Personal Identification Number (PIN). This PIN will allow families to access an online registration system and enter basic demographic, health and emergency contact information. After completing the online registration, parents will be prompted to schedule an appointment for kindergarten screening at the school in their student's 2012-13 attendance area. Updated attendance area information will be available on the district's website, www.olentangy.k12.oh.us, on Friday, February 10.

To learn more about kindergarten registration, go online to:
<http://www.olentangy.k12.oh.us/district/nswc/index.html>



ARRIVAL & DISMISSAL/ARRIVING ON TIME

We are seeing an increase in students arriving late to school. Occasionally, things come up that are unavoidable. We understand that. But when these unavoidable events happen too frequently, there is a cause for concern. Teaching your child the importance of timeliness now will help them throughout their life when they have jobs and other responsibilities.

Morning Drop-Off Procedures:

- Students must not arrive before **8:50 a.m.** on regular school days or 10:50 a.m. on late start days as there is no supervision provided prior to that time.
- Pull up past the front entrance when unloading
- Have your child exit on the building side of your car
- Be cautious of pedestrians crossing in front of your car
- If you choose not to wait in line for unloading, please park your car and walk your child to the front door (children may not walk unattended across the parking lot)



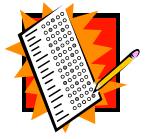
OFFICE HOURS/LISTSERVE

Our office hours are from 8:00 a.m. to 4:30 p.m. If you are calling in an absent student after hours you can leave a message on the answering machine.

To sign up for the listserve, please visit: <http://www.olentangy.k12.oh.us/olists.html>



TESTING INFO



2nd thru 5th grade Olentangy students will be taking a series of assessments beginning **March 5, 2012**. These tests are an important measure of our students' ability and achievement. It is one of many tools that we use to gauge where our students are academically and what areas we need to improve.

During testing, it is imperative that your child be **well rested** and has a **nutritional breakfast**. We also ask that you check the calendar and schedule or **reschedule any appointments for the times that your child will be testing**. All testing will begin by 9:15am and should conclude by 11:30am. Some tests may be shorter.

If students are tardy and their class has started testing, they will need to stay in the office and take a make-up test. Make-up tests are available for students who are ill or are unable to avoid an absence.

All 2nd thru 5th grade students will be taking Terra Nova to measure academic achievement. To measure cognitive ability, 2nd and 3rd graders will take the InView. If you have specific questions about testing, please contact Jen Denny or Tonya Hawk at 740-657-5550.

DATE	2nd Grade	3rdGrade	4th Grade	5th Grade
March 5	InView/ Cognitive	InView/ Cognitive	TN Reading	TN Social Studies
March 6	TN Reading	TN Reading	TN Language	
March 7	TN Math	TN Language	TN Math	
March 8	TN Science	TN Math	TN Science	
March 9	TN Social Studies	TN Science	TN Social Studies	
March 12		TN Social Studies		

STATEWIDE TESTING

3rd, 4th and 5th grade students will participate in statewide Ohio Achievement Assessment beginning **April 23, 2012**.

DATE	3rd Grade	4th Grade	5th Grade
Monday April 23			Reading
Tuesday April 24	Reading	Reading	
Wednesday April 25			Math
Thursday April 26	Math	Math	
Friday April 27			Science

It's here.... The myOlentangy Portal Help Lab!

The myOlentangy Parent Portal is the primary means of viewing elementary report cards, class assignments in the fall, bus information, and EZ Pay to add money to your child's lunch account and/or to pay your elementary school fees online. As the district continues to rely more on electronic communication with our families, it is important that portals be used frequently in order for families to stay informed. We are offering support to families during Parent/Teacher conferences on February 23rd and February 28th. Families will be able to use district laptops to access their portals and receive instructional support on the myOlentangy portal. You may stop in anytime between the hours of 5:00 p.m. and 8:00 p.m. on either night. Our Technology experts will be on hand to assist you with any questions you may have. We hope that you take advantage of this wonderful opportunity.

FIELD TRIP CHAPERONES BCI and FBI BACKGROUND CHECKS

The Olentangy Local School District (OLSD) recognizes the valuable service that parent chaperones lend to student field trips. At the same time, the safety and well being of students and staff is of paramount importance. Therefore, **effective January 2012, any and all adults serving as a parent chaperone (for children other than their own) on a field trip must complete and provide BCI and FBI background check results prior to serving as a chaperone.** Parent(s) will not be allowed to serve as a chaperone until both BCI and FBI background checks have been conducted and the results reviewed by the building principal.

Both **BCI (Ohio)** and **FBI (National)** background (fingerprint) checks can be completed at either of the following suggested Educational Service Center of Central Ohio (ESCCO) locations:

ESCCO – Delaware

(Delaware Area Career Center South Campus)
4565 Columbus Pike Delaware, Ohio 43015
740-548-7880 (Kathy Williams)

Hours: Monday and Thursday – 2:00 to 4:00 p.m. (walk-ins)
Wednesday – 8:30 to 11:30 a.m. (walk-ins)

ESCCO – Columbus

2080 Citygate Drive Columbus, Ohio 43219
614-445-3750 (Patti Olson)

Hours: Monday and Thursday – 8:30 to 11:30 a.m. (walk-ins) Wednesday – 2:00 to 4:00 p.m. (walk-ins) If needed, please call to schedule an available appointment outside of these hours.

Fees: BCI (\$27); FBI (\$24); BCI and FBI (\$51) Exact cash, debit card, or credit card (Visa or MasterCard) are all recognized as acceptable payment.

The excellence in our school system is due, in large part, to the involvement of our parents and their volunteer efforts. OLSD appreciates the valuable time parents and volunteers donate and we look forward to continuing that partnership in the future. Please direct any question(s) that you may have regarding this matter to the school principal.